

## Index

1. Description
  - 1.1 Principle of MACS<sup>®</sup> separation
  - 1.2 Background and product applications
  - 1.3 Reagent and instrument requirements
2. Protocol
  - 2.1 Sample preparation
  - 2.2 Magnetic labeling
  - 2.3 Magnetic separation
3. Example of a separation using Anti-FITC MicroBeads

## 1. Description

<b>Components</b>	2 mL Anti-FITC MicroBeads: MicroBeads conjugated to monoclonal anti-FITC Isomer-1 antibody (isotype: mouse IgG1)
<b>Size</b>	For $2 \times 10^9$ total cells, up to 200 separations.
<b>Product format</b>	Anti-FITC MicroBeads are supplied in a solution containing stabilizer and 0.05% sodium azide.
<b>Storage</b>	Store protected from light at 4–8 °C. Do not freeze. The expiration date is indicated on the vial label.

### 1.1 Principle of MACS<sup>®</sup> separation

First, the cells are stained with a FITC-conjugated primary antibody or ligand. Subsequently, the cells are magnetically labeled with Anti-FITC MicroBeads. Then the cell suspension is loaded on a MACS<sup>®</sup> Column which is placed in the magnetic field of a MACS Separator. The magnetically labeled cells are retained in the column while the unlabeled cells run through. After removal of the column from the magnetic field, the magnetically retained cells can be eluted as the positively selected cell fraction.

### 1.2 Background and product applications

Anti-FITC MicroBeads are developed for the separation of cells according to surface markers labeled with FITC-conjugated antibodies, peptides or ligands. After separation the FITC-labeled cells can be detected by flow cytometry or fluorescence microscopy.

▲ **Note:** Magnetic labeling with Anti-FITC MicroBeads may reduce the fluorescence intensity of the FITC staining.

### Examples of applications

- Positive selection or depletion of cells labeled with FITC-conjugated antibodies.
- Positive selection or depletion of cells labeled with FITC-conjugated peptides or ligands.

### 1.3 Reagent and instrument requirements

- Buffer (degassed): Prepare a solution containing PBS (phosphate buffered saline) pH 7.2, 0.5% BSA (bovine serum albumin) and 2 mM EDTA by diluting MACS BSA Stock Solution (# 130-091-376) 1:20 with autoMACS<sup>™</sup> Rinsing Solution (# 130-091-222). Keep buffer cold (4–8 °C).
  - ▲ **Note:** EDTA can be replaced by other supplements such as anticoagulant citrate dextrose formula-A (ACD-A) or citrate phosphate dextrose (CPD). BSA can be replaced by other proteins such as human serum albumin, human serum or fetal calf serum. Buffers or media containing  $\text{Ca}^{2+}$  or  $\text{Mg}^{2+}$  are not recommended for use.
- FITC-conjugated primary antibody, peptide or ligand.
  - ▲ **Note:** Use primary reagents conjugated with FITC Isomer-1 only. Most commercially antibody suppliers use FITC Isomer-1.
- (Optional) PI (propidium iodide) or 7-AAD for exclusion of dead cells.
- (Optional) Pre-Separation Filters (# 130-041-407) to remove cell clumps.
- MACS Columns and MACS Separators: Cells labeled with Anti-FITC MicroBeads can be enriched by using MS, LS or XS Columns (positive selection). Anti-FITC MicroBeads can be used for depletion of cells on LD, CS or D Columns. Cells which strongly express the FITC-labeled antigen can also be depleted using MS, LS or XS Columns. Positive selection or depletion can also be performed by using the autoMACS Separator.

Column	max. number of labeled cells	max. number of total cells	Separator
<b>Positive selection</b>			
MS	$10^7$	$2 \times 10^8$	MiniMACS, OctoMACS, VarioMACS, SuperMACS
LS	$10^8$	$2 \times 10^9$	MidiMACS, QuadroMACS, VarioMACS, SuperMACS
XS	$10^9$	$2 \times 10^{10}$	SuperMACS
<b>Depletion</b>			
LD	$10^8$	$5 \times 10^8$	MidiMACS, QuadroMACS, VarioMACS, SuperMACS
CS	$2 \times 10^8$		VarioMACS, SuperMACS
D	$10^9$		SuperMACS
<b>Positive selection or depletion</b>			
autoMACS	$2 \times 10^8$	$4 \times 10^9$	autoMACS

▲ **Note:** Column adapters are required to insert certain columns into VarioMACS<sup>™</sup> Separator or SuperMACS<sup>™</sup> Separator. For details, see MACS Separator data sheets.

## 2. Protocol

### 2.1 Sample preparation

When working with anticoagulated peripheral blood or buffy coat, PBMC should be isolated by density gradient centrifugation (see "General Protocols" in the User Manuals or visit [www.miltenyibiotec.com](http://www.miltenyibiotec.com)).

▲ **Note:** Remove platelets after density gradient separation: resuspend cell pellet in buffer and centrifuge at 200xg for 10–15 minutes at 20 °C. Carefully remove supernatant. Repeat washing step and carefully remove supernatant.

When working with tissues, prepare a single-cell suspension by a standard preparation method (see "General Protocols" in the User Manuals or visit [www.miltenyibiotec.com](http://www.miltenyibiotec.com)).

▲ **Note:** Dead cells may bind non-specifically to MACS MicroBeads. To remove dead cells, we recommend using density gradient centrifugation (e.g. Ficoll-Paque™) or using the Dead Cell Removal Kit (# 130-090-101).



### 2.3 Magnetic labeling

▲ Work fast, keep the cells cold, and use pre-cooled solutions. This will prevent capping of antibodies on the cell surface and a non-specific cell labeling.

▲ Volumes for magnetic labeling given below are for 10<sup>7</sup> total cells. When working with fewer than 10<sup>7</sup> cells, use the same volumes as indicated. When working with higher cell numbers, scale up all reagent volumes and total volumes, accordingly (e.g. for 2×10<sup>7</sup> total cells, use twice the volume of all indicated reagent volumes and total volumes).

▲ Primary FITC-conjugated antibodies should be titrated to determine the optimal staining dilution. Staining should not increase fluorescence intensity of the negative population.

1. After preparation of single-cell suspension count cells and centrifuge cell sample.
2. Resuspend cell pellet and stain with the primary FITC-conjugated antibody according to the manufacturer's recommendations. For MACS FITC-conjugated antibodies, resuspend 10<sup>7</sup> total cells in 100 µL buffer and add 10 µL FITC-conjugate.

3. Mix well and incubate for 10 minutes in the dark at 4–8 °C or according to the manufacturer's recommendations.

▲ **Note:** Working on ice requires increased incubation time. Higher temperatures and/or longer incubation times lead to non-specific cell labeling.

4. Wash cells to remove unbound primary antibody by adding 1–2 mL of buffer per 10<sup>7</sup> cells and centrifuge at 300xg for 10 minutes.

▲ **Note:** The optimal relative centrifugal force (RCF) and centrifugation time may be different depending on the cell sample.

5. (Optional) Repeat washing step.
6. Pipette off supernatant completely and resuspend cell pellet in 90 µL of buffer per 10<sup>7</sup> total cells.
7. Add 10 µL of Anti-FITC MicroBeads per 10<sup>7</sup> total cells.

▲ **Note:** The concentration of Anti-FITC MicroBeads used to achieve optimal magnetic separation is dependent on the intensity of FITC-conjugated antibody staining and on the frequency of target cells in suspension. Dimly FITC-stained target cells require a higher concentration of Anti-FITC MicroBeads to achieve optimal magnetic labeling and separation.

8. Mix well and incubate for 15 minutes at 4–8 °C.

▲ **Note:** Working on ice requires increased incubation time. Higher temperatures and/or longer incubation times lead to non-specific cell labeling.

9. Wash cells by adding 1–2 mL of buffer per 10<sup>7</sup> cells and centrifuge at 300xg for 10 minutes.

▲ **Note:** The optimal relative centrifugal force (RCF) and centrifugation time may be different depending on the cell sample.

10. Pipette off supernatant completely.

11. Resuspend up to 10<sup>8</sup> cells in 500 µL of buffer.

▲ **Note:** For higher cell numbers, scale up buffer volume accordingly.

▲ **Note:** For depletion with LD Columns, resuspend up to 1.25×10<sup>8</sup> cells in 500 µL of buffer.

12. Proceed to magnetic separation (2.3).



### 2.3 Magnetic separation

▲ Choose an appropriate MACS Column and MACS Separator according to the number of total cells and the number of magnetically labeled cells (see table 1.3).

#### Magnetic separation with MS or LS Columns

1. Place column in the magnetic field of a suitable MACS Separator (see "Column data sheets").
2. Prepare column by rinsing with appropriate amount of buffer:  
MS: 500 µL                      LS: 3 mL.
3. Apply cell suspension onto the column.
4. Collect unlabeled cells which pass through and wash column with appropriate amount of buffer. Perform washing steps by adding buffer three times, each time once the column reservoir is empty.  
MS: 3×500 µL                      LS: 3×3 mL.  
Collect total effluent. This is the unlabeled cell fraction.
5. Remove column from the separator and place it on a suitable collection tube.
6. Pipette appropriate amount of buffer onto the column. Immediately flush out fraction with the magnetically labeled cells by firmly applying the plunger, supplied with the column.  
MS: 1 mL                              LS: 5 mL.

▲ **Note:** To increase the purity of the magnetically labeled fraction, it can be passed over a new, freshly prepared column.

#### Magnetic separation with XS Columns

For instructions on the column assembly and the separation, refer to the "XS Column data sheet".

#### Depletion with LD Columns

1. Place LD Column in the magnetic field of a suitable MACS Separator (see "LD Column data sheet").
2. Prepare column by rinsing with 2 mL of buffer.
3. Apply cell suspension onto the column.
4. Collect unlabeled cells which pass through and wash column with 2×1 mL of buffer. Collect total effluent. This is the unlabeled cell fraction.

#### Depletion with CS Columns

1. Assemble CS Column and place it in the magnetic field of a suitable MACS Separator (see "CS Column data sheet").
2. Prepare column by filling and rinsing with 60 mL of buffer. Attach a 22G flow resistor to the 3-way-stopcock of the assembled column (see "CS Column data sheet").

- Apply cell suspension onto the column.
- Collect unlabeled cells which pass through and wash column with 30 mL buffer from top. Collect total effluent. This is the unlabeled cell fraction.

### Depletion with D Columns

For instructions on column assembly and separation, refer to the "D Column data sheet".

### Magnetic separation with autoMACS™ Separator

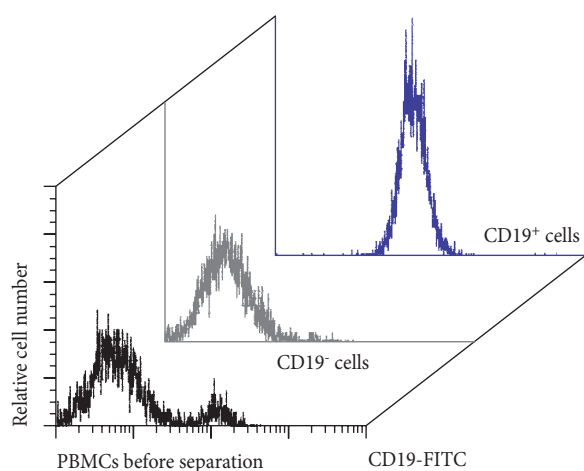
▲ Refer to the "autoMACS™ User Manual" for instructions on how to use the autoMACS Separator.

- Prepare and prime autoMACS Separator.
- Place tube containing magnetically labeled cells in autoMACS. Choose a separation program according to the recommendations in the autoMACS User Manual.

▲ **Note:** Program choice depends on the isolation strategy, the strength of magnetic labeling and the frequency of magnetically labeled cells. For details see autoMACS User Manual: "autoMACS Cell Separation Programs".

### 3. Example of a separation using Anti-FITC MicroBeads

Separation of human peripheral blood mononuclear cells (PBMCs) using CD19-FITC, Anti-FITC MicroBeads and a MiniMACS™ Separator with an MS Column.



Refer to [www.miltenyibiotec.com](http://www.miltenyibiotec.com) for all data sheets and protocols. Miltenyi Biotec provides technical support worldwide. Visit [www.miltenyibiotec.com/local](http://www.miltenyibiotec.com/local) to find your nearest Miltenyi Biotec contact.

### Warnings

Reagents contain sodium azide. Under acidic conditions sodium azide yields hydrazoic acid, which is extremely toxic. Azide compounds should be diluted with running water before discarding. These precautions are recommended to avoid deposits in plumbing where explosive conditions may develop.

## Legal notices

### Limited product warranty

Miltenyi Biotec B.V. & Co. KG and/or its affiliate(s) warrant this product to be free from material defects in workmanship and materials and to conform substantially with Miltenyi Biotec's published specifications for the product at the time of order, under normal use and conditions in accordance with its applicable documentation, for a period beginning on the date of delivery of the product by Miltenyi Biotec or its authorized distributor and ending on the expiration date of the product's applicable shelf life stated on the product label, packaging or documentation (as applicable) or, in the absence thereof, ONE (1) YEAR from date of delivery ("Product Warranty"). Miltenyi Biotec's Product Warranty is provided subject to the warranty terms as set forth in Miltenyi Biotec's General Terms and Conditions for the Sale of Products and Services available on Miltenyi Biotec's website at [www.miltenyibiotec.com](http://www.miltenyibiotec.com), as in effect at the time of order ("Product Warranty"). Additional terms may apply. BY USE OF THIS PRODUCT, THE CUSTOMER AGREES TO BE BOUND BY THESE TERMS.

THE CUSTOMER IS SOLELY RESPONSIBLE FOR DETERMINING IF A PRODUCT IS SUITABLE FOR CUSTOMER'S PARTICULAR PURPOSE AND APPLICATION METHODS.

### Technical information

The technical information, data, protocols, and other statements provided by Miltenyi Biotec in this document are based on information, tests, or experience which Miltenyi Biotec believes to be reliable, but the accuracy or completeness of such information is not guaranteed. Such technical information and data are intended for persons with knowledge and technical skills sufficient to assess and apply their own informed judgment to the information. Miltenyi Biotec shall not be liable for any technical or editorial errors or omissions contained herein.

All information and specifications are subject to change without prior notice. Please contact Miltenyi Biotec Technical Support or visit [www.miltenyibiotec.com](http://www.miltenyibiotec.com) for the most up-to-date information on Miltenyi Biotec products.

### Licenses

This product and/or its use may be covered by one or more pending or issued patents and/or may have certain limitations. Certain uses may be excluded by separate terms and conditions. Please contact your local Miltenyi Biotec representative or visit Miltenyi Biotec's website at [www.miltenyibiotec.com](http://www.miltenyibiotec.com) for more information.

The purchase of this product conveys to the customer the non-transferable right to use the purchased amount of the product in research conducted by the customer (whether the customer is an academic or for-profit entity). This product may not be further sold. Additional terms and conditions (including the terms of a Limited Use Label License) may apply.

CUSTOMER'S USE OF THIS PRODUCT MAY REQUIRE ADDITIONAL LICENSES DEPENDING ON THE SPECIFIC APPLICATION. THE CUSTOMER IS SOLELY RESPONSIBLE FOR DETERMINING FOR ITSELF WHETHER IT HAS ALL APPROPRIATE LICENSES IN PLACE. Miltenyi Biotec provides no warranty that customer's use of this product does not and will not infringe intellectual property rights owned by a third party. BY USE OF THIS PRODUCT, THE CUSTOMER AGREES TO BE BOUND BY THESE TERMS.

### Trademarks

autoMACS, MACS, MidiMACS, the Miltenyi Biotec logo, MiniMACS, OctoMACS, QuadroMACS, SuperMACS, and VarioMACS are registered trademarks or trademarks of Miltenyi Biotec and/or its affiliates in various countries worldwide. All other trademarks mentioned in this publication are the property of their respective owners and are used for identification purposes only.

Ficoll-Paque is a trademark of GE Healthcare companies.

Copyright © 2020 Miltenyi Biotec and/or its affiliates. All rights reserved.