




Miltenyi Biotec

# MACSprep™ Technology

Excellence in cell preparation  
for diagnostic research





Reliable and high-quality results with manual as well as automated separation

Standardized cell separation solutions with the autoMACS® and MultiMACS™ family

Resulting cells  
are suitable for various  
downstream analyses



No density gradient  
centrifugation or erythrocyte  
lysis necessary



# MACSprep™ HLA Cell Isolation Kits

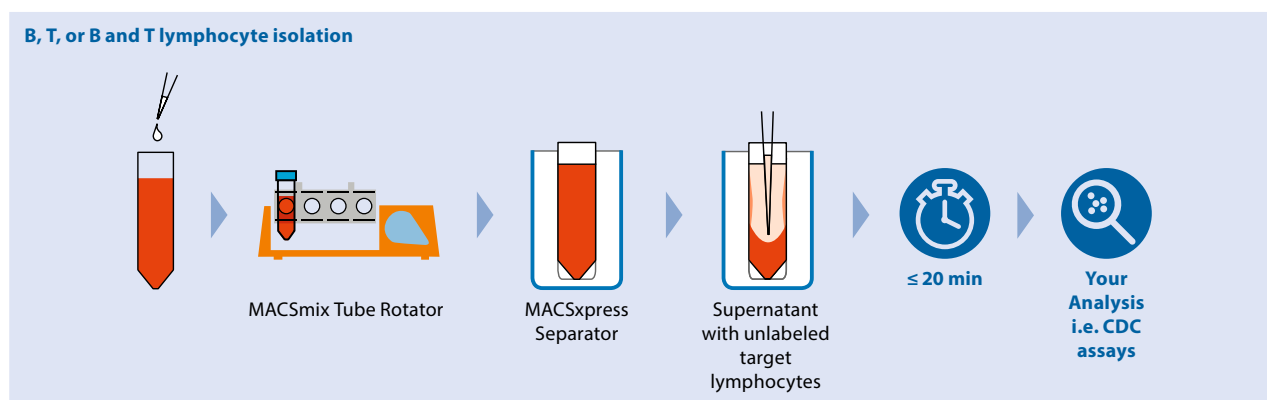
Routine human leukocyte antigen (HLA) analysis does not have to be time consuming or costly.

MACSprep™ HLA Cell Isolation Kits are designed for simple and fast B, T, or B and T lymphocyte isolation, which are suitable for complement dependent cytotoxicity (CDC) assays:

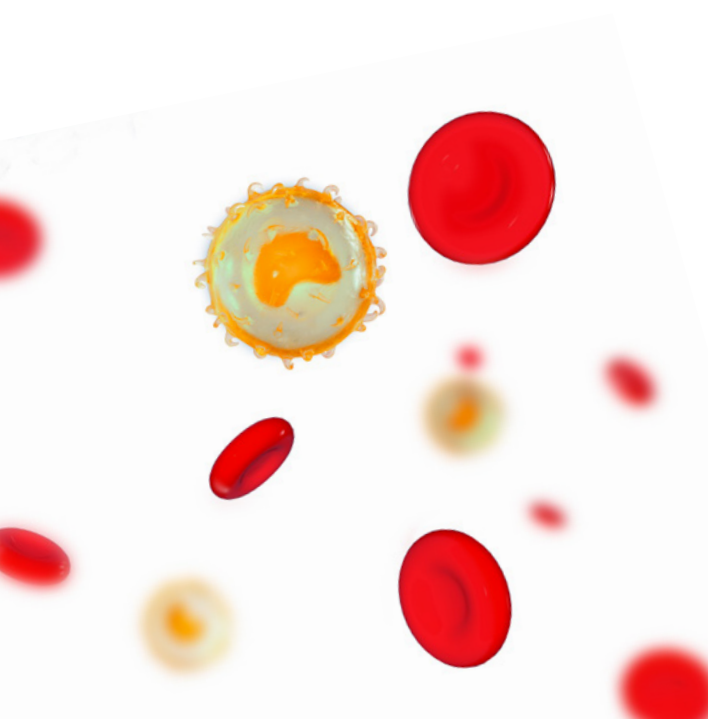
- Untouched cell isolation directly from anticoagulated whole blood or spleen cell suspensions in 20 min
- Easy, minimal hands-on time protocol with the MACSpress® Separator
- High cell purity, viability, and recovery reduces crossmatch background in downstream analyses

## Related products

Product	Order no.
MACSprep™ HLA Starting Kit MACSpress	130-111-749
MACSprep™ HLA Starting Kit MACSiMAG	130-111-748
MACSprep™ HLA B Cell Isolation Kits – 5×5 mL	130-110-130
MACSprep™ HLA B Cell Isolation Kits – 5×20 mL	130-110-440
MACSprep™ HLA T Cell Isolation Kits – 5×5 mL	130-110-128
MACSprep™ HLA T Cell Isolation Kits – 5×20 mL	130-110-441
MACSprep™ HLA B/T Cell Isolation Kits – 5×5 mL	130-110-129
MACSprep™ HLA B/T Cell Isolation Kits – 5×20 mL	130-110-439



**Figure 1:** MACSprep HLA isolation of unlabeled target lymphocytes workflow.



VISIT 



HLA Cell Isolation Kits can easily be incorporated into your workflow. To learn more visit our website:

► [miltenyibiotec.com/HLAisolation](https://www.miltenyibiotec.com/HLAisolation)



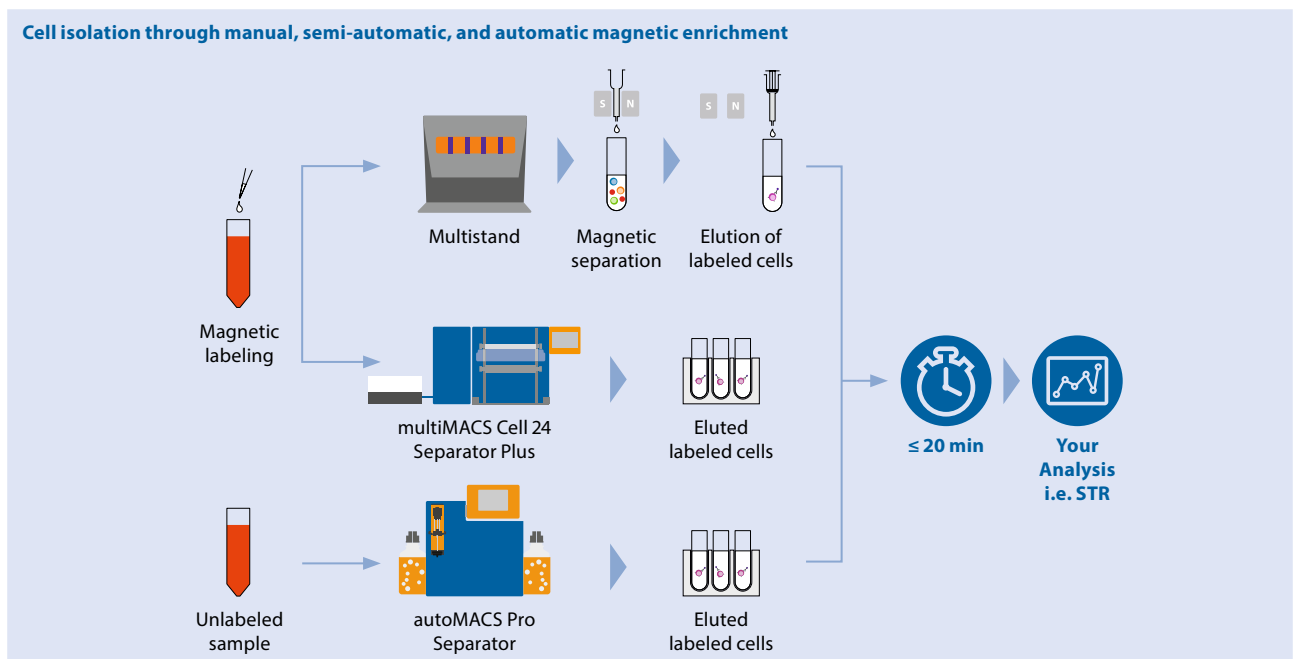
# MACSprep™ Chimerism MicroBeads

Easily isolate the cells you need for lineage-specific chimerism analysis. MACSprep™ Chimerism MicroBeads allow for magnetic cell enrichment of pure B, NK, myeloid cells, monocytes, granulocytes, and stem cells directly from whole blood. In combination with the autoMACS® Pro Separator the standardized cell isolation with minimal hands-on time is a great fit for developing routine analyses:

- Cell isolation directly from whole blood in 20 min
- Fully automated procedure frees up handling time
- Enriched cells are well-suited for further lineage-specific chimerism analysis, STR analysis, flow cytometric analysis, and functional studies

## Related products

Product	Lineage	Order no.
MACSprep™ Chimerism CD3 MicroBeads	T cells	130-111-551
MACSprep™ Chimerism CD14 MicroBeads	Monocytes	130-111-549
MACSprep™ Chimerism CD15 MicroBeads	Granulocytes	130-111-548
MACSprep™ Chimerism CD19 MicroBeads	B cells	130-111-547
MACSprep™ Chimerism CD33 MicroBeads	Myeloid cells	130-111-546
MACSprep™ Chimerism CD56 MicroBeads	NK cells	130-111-553
MACSprep™ Chimerism CD66b MicroBeads	Granulocytes	130-111-552
MACSprep™ Chimerism CD34 MicroBead Kit*	HSC	130-120-673



**Figure 2:** MACSprep Chimerism MicroBeads workflows for magnetic enrichment of cells directly from whole blood.

VISIT



Boost your analysis with Chimerism MicroBeads to isolate needed cells. Find out more on our website:

► [miltenyibiotec.com/ChimerismMicroBeads](https://miltenyibiotec.com/ChimerismMicroBeads)

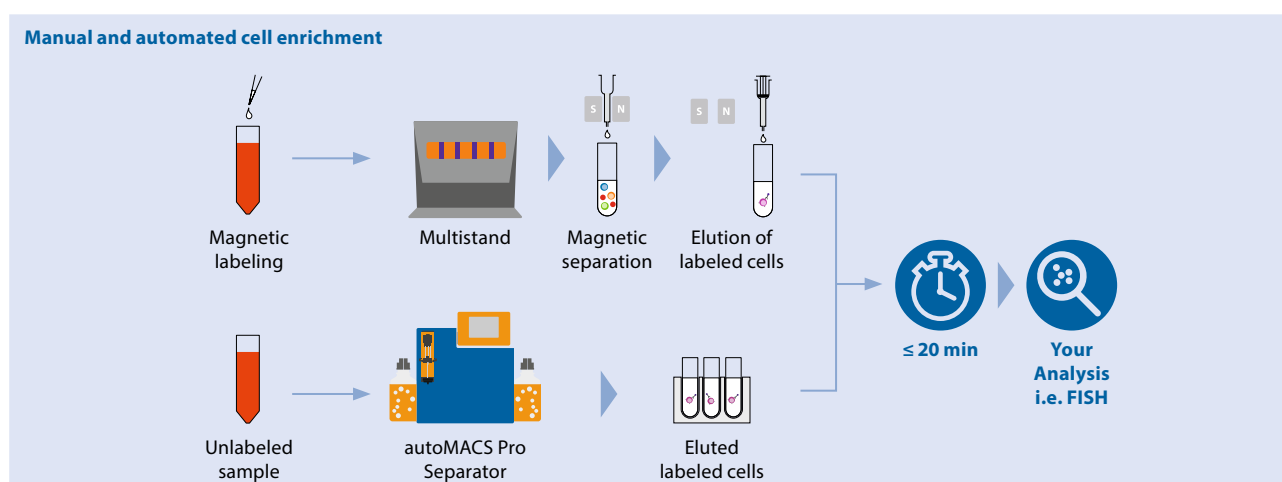
# MACSprep™ Multiple Myeloma CD138+ MicroBeads

For the problematic isolation of CD138<sup>+</sup> plasma cells (PCs), our MACSprep™ Multiple Myeloma CD138 MicroBeads, human are the best and easiest solution. The minimal manipulation of bone marrow samples ensures the high integrity of CD138<sup>+</sup> PCs that are suitable for further cellular or molecular analyses, such as flow cytometry, cytogenetic FISH, PCR, or microarray:

- Cell isolation directly from bone marrow or peripheral blood in 20 min
- Easy isolation and minimal handling of samples for high purity of CD138<sup>+</sup> PCs
- Scalable automation solution frees handling time

## Related products

Product	Order no.
MACSprep™ Multiple Myeloma CD138 MicroBeads	130-111-744
autoMACS® Pro Separator – Starter Kit	130-092-545
Whole Blood QuadroMACS Starting Kit	130-098-242
Whole Blood MidiMACS Starting Kit	130-098-240



**Figure 3:** Manual and automated enrichment workflows. Enrichment of PCs directly from bone marrow using the autoMACS Pro Separator (lower) saves hands-on time and minimizes the procedure compared to manual cell enrichment (upper).

VISIT 



Make Multiple Myeloma CD138<sup>+</sup> MicroBeads a part of your workflow. Visit our website for more information:  
▶ [miltenyibiotec.com/CD138plasmacells](https://miltenyibiotec.com/CD138plasmacells)

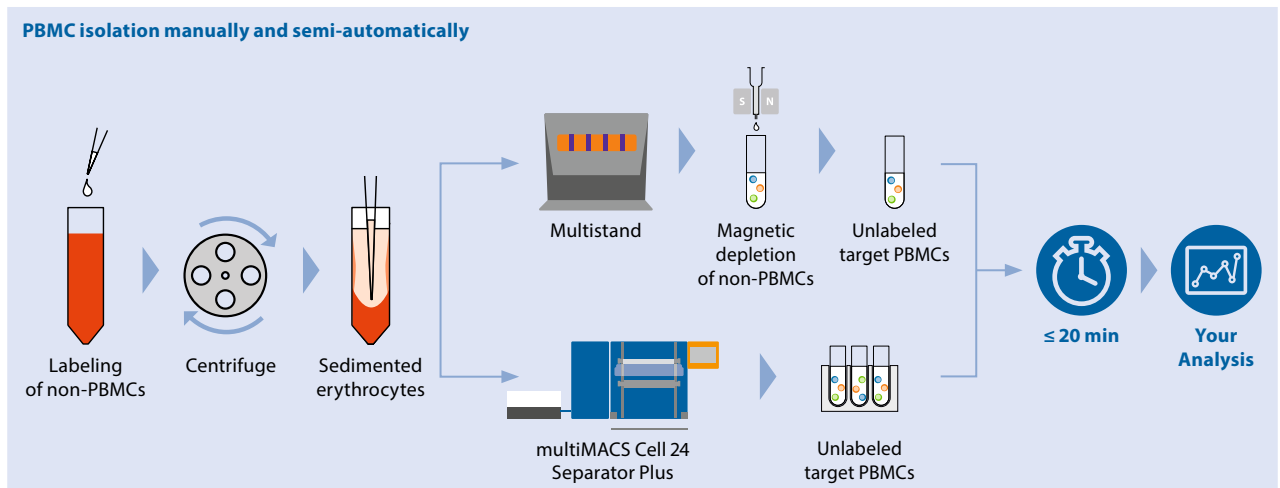
# MACSprep™ PBMC Isolation Kit

Getting human peripheral blood mononuclear cells (PBMCs) can be quick and simple. The MACSprep™ PBMC Isolation Kit, human has been developed for the fast isolation of human PBMCs from 2–8 mL of freshly drawn anticoagulated whole blood without density gradient centrifugation:

- Untouched PBMCs isolation directly from anticoagulated whole blood
- Highly pure cells in only 20 min
- Isolated PBMCs are suitable for various downstream applications

## Related products

Product	Order no.
MACSprep™ PBMC Isolation Kit, human	130-115-169
MultiMACS™ Cell24 Separator Plus	130-098-637



**Figure 4:** Direct PBMC isolation from whole blood workflows.

VISIT 



PBMC Isolation Kits - untouched PBMCs ready for your analyses. Find out more on our website: [▶ miltenyibiotec.com/PBMCisolation](https://www.miltenyibiotec.com/PBMCisolation)

► [miltenyibiotec.com/MACSprep](http://miltenyibiotec.com/MACSprep)



**Miltenyi Biotec**

**Germany/Austria**

Miltenyi Biotec B.V. & Co. KG  
Friedrich-Ebert-Straße 68  
51429 Bergisch Gladbach  
Germany  
Phone +49 2204 8306-0  
Fax +49 2204 85197  
[macs@miltenyibiotec.de](mailto:macs@miltenyibiotec.de)

**USA/Canada**

Miltenyi Biotec Inc.  
2303 Lindbergh Street  
Auburn, CA 95602, USA  
Phone 800 FOR MACS  
Phone +1 530 888 8871  
Fax +1 877 591 1060  
[macs@miltenyibiotec.com](mailto:macs@miltenyibiotec.com)

**Australia**

Miltenyi Biotec  
Australia Pty. Ltd.  
Unit 11, 2 Eden Park Drive  
Macquarie Park, NSW 2113  
Australia  
Phone +61 2 8877 7400  
Fax +61 2 9889 5044  
[macs@miltenyibiotec.com.au](mailto:macs@miltenyibiotec.com.au)

**Benelux**

Miltenyi Biotec B.V.  
Sandifordreef 17  
2333 ZZ Leiden  
The Netherlands  
[macs@miltenyibiotec.nl](mailto:macs@miltenyibiotec.nl)

**Customer service**

**The Netherlands**  
Phone 0800 4020120  
Fax 0800 4020100

**Customer service Belgium**

Phone 0800 94016  
Fax 0800 99626

**Customer service Luxembourg**

Phone 800 24971  
Fax 800 24984

**China**

Miltenyi Biotec Technology &  
Trading (Shanghai) Co., Ltd.  
Room 401  
No. 1077, Zhangheng Road  
Pudong New Area  
201203 Shanghai, P.R. China  
Phone +86 21 6235 1005  
Fax +86 21 6235 0953  
[macs@miltenyibiotec.com.cn](mailto:macs@miltenyibiotec.com.cn)

**France**

Miltenyi Biotec SAS  
10 rue Mercoeur  
75011 Paris, France  
Phone +33 1 56 98 16 16  
Fax +33 1 56 98 16 17  
[macs@miltenyibiotec.fr](mailto:macs@miltenyibiotec.fr)

**Italy**

Miltenyi Biotec S.r.l.  
Via Paolo Nanni Costa, 30  
40133 Bologna  
Italy  
Phone +39 051 6 460 411  
Fax +39 051 6 460 499  
[macs@miltenyibiotec.it](mailto:macs@miltenyibiotec.it)

**Japan**

Miltenyi Biotec K.K.  
NEX-Eitai Building 5F  
16-10 Fuyuki, Koto-ku  
Tokyo 135-0041, Japan  
Phone +81 3 5646 8910  
Fax +81 3 5646 8911  
[macs@miltenyibiotec.jp](mailto:macs@miltenyibiotec.jp)

**Nordics and Baltics**

Miltenyi Biotec Norden AB  
Scheelevägen 17  
223 70 Lund  
Sweden  
[macs@miltenyibiotec.se](mailto:macs@miltenyibiotec.se)

**Customer service Sweden**

Phone 0200 111 800  
Fax 046 280 72 99

**Customer service Denmark**

Phone 80 20 30 10  
Fax +46 46 280 72 99

**Customer service**

**Norway, Finland, Iceland,  
and Baltic countries**  
Phone +46 46 280 72 80  
Fax +46 46 280 72 99

**Singapore**

Miltenyi Biotec Asia Pacific Pte Ltd  
438B Alexandra Road, Block B  
Alexandra Technopark  
#06-01  
Singapore 119968  
Phone +65 6238 8183  
Fax +65 6238 0302  
[maccsg@miltenyibiotec.com.sg](mailto:maccsg@miltenyibiotec.com.sg)

**South Korea**

Miltenyi Biotec Korea Co., Ltd.  
Arigi Bldg. 8F  
562 Nonhyeon-ro  
Gangnam-gu  
Seoul 06136, South Korea  
Phone +82 2 555 1988  
Fax +82 2 555 8890  
[macs@miltenyibiotec.co.kr](mailto:macs@miltenyibiotec.co.kr)

**Spain**

Miltenyi Biotec S.L.  
C/Luis Buñuel 2  
Ciudad de la Imagen  
28223 Pozuelo de Alarcón (Madrid)  
Spain  
Phone +34 91 512 12 90  
Fax +34 91 512 12 91  
[macs@miltenyibiotec.es](mailto:macs@miltenyibiotec.es)

**Switzerland**

Miltenyi Biotec Swiss AG  
Gibelinstrasse 27  
4500 Solothurn  
Switzerland  
Phone +41 32 623 08 47  
Fax +49 2204 85197  
[macs@miltenyibiotec.ch](mailto:macs@miltenyibiotec.ch)

**United Kingdom**

Miltenyi Biotec Ltd.  
Almac House, Church Lane  
Bisley, Surrey GU24 9DR, UK  
Phone +44 1483 799 800  
Fax +44 1483 799 811  
[macs@miltenyibiotec.co.uk](mailto:macs@miltenyibiotec.co.uk)

[www.miltenyibiotec.com](http://www.miltenyibiotec.com)

Miltenyi Biotec provides products and services worldwide. Visit [www.miltenyibiotec.com/local](http://www.miltenyibiotec.com/local) to find your nearest Miltenyi Biotec contact.

Unless otherwise specifically indicated, Miltenyi Biotec products and services are for research use only and not for therapeutic or diagnostic use. MACSprep, MultiMACS, autoMACS, MACSxpress, MACSmix, MACS, and the MACS logo are registered trademarks or trademarks of Miltenyi Biotec and/or its affiliates in various countries worldwide. Copyright © 2020 Miltenyi Biotec and/or its affiliates. All rights reserved.