

## Contents

1. Description
  - 1.1 Principle of the MACS® Separation
  - 1.2 Background information
  - 1.3 Applications
  - 1.4 Reagent and instrument requirements
2. Protocol
  - 2.1 Reconstitution of MicroBeads
  - 2.2 Sample preparation
  - 2.3 Magnetic labeling
  - 2.4 Magnetic separation
  - 2.5 (Optional) Evaluation of hematopoietic progenitor cell purity
3. Example of a separation using the CD34 MicroBead Kit
4. References

## 1. Description

<b>Components</b>	<p><b>1 vial CD34 MicroBeads, human – lyophilized:</b> MicroBeads conjugated to monoclonal anti-human CD34 antibodies (isotype: mouse IgG1).</p> <p><b>2 ml FcR Blocking Reagent:</b> human IgG</p> <p><b>2 mL Reconstitution Buffer</b></p>
<b>Capacity</b>	For 2×10 <sup>9</sup> total cells.
<b>Product format</b>	Lyophilized MicroBeads. Reconstitution Buffer contains stabilizer and 0.05% sodium azide.
<b>Storage</b>	Store protected from light at 2–8 °C. Do not freeze. The expiration date is indicated on the vial label. For information about reconstitution of the lyophilized MicroBeads and storage after reconstitution refer to chapter 2.1.

### 1.1 Principle of the MACS® Separation

First, the CD34<sup>+</sup> cells are magnetically labeled with CD34 MicroBeads. Then, the cell suspension is loaded onto a MACS® Column, which is placed in the magnetic field of a MACS Separator. The magnetically labeled CD34<sup>+</sup> cells are retained within the column. The unlabeled cells run through; this cell fraction is thus depleted of CD34<sup>+</sup> cells. After removing the column from the magnetic field, the magnetically retained CD34<sup>+</sup> cells can be eluted as the positively selected cell fraction.

### 1.2 Background information

The CD34 antigen is a single chain transmembrane glycoprotein expressed on human hematopoietic progenitor cells, endothelial progenitor cells, vascular endothelial cells, embryonic fibroblasts, and some cells in fetal and adult nervous tissue.

The CD34 MicroBead Kit contains MicroBeads directly conjugated to CD34 antibodies for magnetic labeling of CD34-expressing cells from peripheral blood, cord blood, bone marrow, apheresis harvest, or differentiated ES and iPS cells. Hematopoietic progenitor cells, present at a frequency of about 0.05–0.2% in peripheral blood, 0.1–0.5% in cord blood, and 0.5–3% in bone marrow, can be rapidly and efficiently enriched.

### 1.3 Applications

- Positive selection or depletion of cells expressing human CD34 antigen.<sup>1,5</sup>
- Isolation of hematopoietic progenitor cells.
- Isolation of endothelial progenitor cells (EPCs).<sup>2,3</sup>
- Isolation of CD34<sup>+</sup> progenitor cells from differentiated ES and iPS cell cultures.<sup>4</sup>
- *In vitro* differentiation studies.<sup>1,5</sup>
- Studies on hematologic malignancies.

### 1.4 Reagent and instrument requirements

- **Buffer:** Prepare a solution containing phosphate-buffered saline (PBS), pH 7.2, 0.5% bovine serum albumin (BSA), and 2 mM EDTA by diluting MACS BSA Stock Solution (# 130-091-376) 1:20 with autoMACS® Rinsing Solution (# 130-091-222). Keep buffer cold (2–8 °C). Degas buffer before use, as air bubbles could block the column.

▲ **Note:** EDTA can be replaced by other supplements such as anticoagulant citrate dextrose formula-A (ACD-A) or citrate phosphate dextrose (CPD). BSA can be replaced by other proteins such as human serum albumin, human serum, or fetal bovine serum (FBS). Buffers or media containing Ca<sup>2+</sup> or Mg<sup>2+</sup> are not recommended for use.

- MACS Columns and MACS Separators: CD34<sup>+</sup> cells can be enriched by using MS, LS, or XS Columns or depleted with the use of LD, CS, or D Columns. Cells that strongly express the CD34 antigen can also be depleted using MS, LS, or XS Columns. Positive selection or depletion can also be performed by using the autoMACS Pro or the autoMACS Separator.

Column	Max. number of labeled cells	Max. number of total cells	Separator
<b>Positive selection</b>			
MS	10 <sup>7</sup>	2×10 <sup>8</sup>	MiniMACS, OctoMACS, VarioMACS, SuperMACS II
LS	10 <sup>8</sup>	2×10 <sup>9</sup>	MidiMACS, QuadroMACS, VarioMACS, SuperMACS II
XS	10 <sup>9</sup>	2×10 <sup>10</sup>	SuperMACS II
<b>Depletion</b>			
LD	10 <sup>8</sup>	5×10 <sup>8</sup>	MidiMACS, QuadroMACS, VarioMACS, SuperMACS II
CS	2×10 <sup>8</sup>		VarioMACS, SuperMACS II
D	10 <sup>9</sup>		SuperMACS II
<b>Positive selection or depletion</b>			
autoMACS	2×10 <sup>8</sup>	4×10 <sup>9</sup>	autoMACS Pro, autoMACS

▲ **Note:** Column adapters are required to insert certain columns into the VarioMACS™ or SuperMACS™ II Separators. For details refer to the respective MACS Separator data sheet.

- (Optional) MC CD34 Stem Cell Cocktail (# 130-093-427) for flow cytometric analysis of separated cells.
- (Optional) Fluorochrome-conjugated CD34 antibodies for flow cytometric analysis, e.g., CD34-FITC (# 130-081-001). For more information about antibodies refer to [www.miltenyibiotec.com/antibodies](http://www.miltenyibiotec.com/antibodies).
- (Optional) Propidium Iodide Solution (# 130-093-233) or 7-AAD for flow cytometric exclusion of dead cells.
- (Optional) Dead Cell Removal Kit (# 130-090-101) for the depletion of dead cells.
- (Optional) Pre-Separation Filters, 30 μm (# 130-041-407) to remove cell clumps.

## 2. Protocol

### 2.1 Reconstitution of MicroBeads

Reconstitute the lyophilized MicroBeads by adding all Reconstitution Buffer to the vial. Mix by pipetting up and down until resuspended. After reconstitution the MicroBeads are stable for 9 months at 2–8 °C. Write the new expiration date after reconstitution on the vial label.

### 2.2 Sample preparation

When working with anticoagulated peripheral blood or buffy coat, peripheral blood mononuclear cells (PBMCs) should be isolated by density gradient centrifugation, for example, using Ficoll-Paque™.

▲ **Note:** To remove platelets after density gradient separation, resuspend cell pellet in buffer and centrifuge at 200×g for 10–15 minutes at 20 °C. Carefully aspirate supernatant. Repeat washing step.

When working with tissues or lysed blood, prepare a single-cell suspension using standard methods.

For details refer to the protocols section at [www.miltenyibiotec.com/protocols](http://www.miltenyibiotec.com/protocols).

▲ Dead cells may bind non-specifically to MACS MicroBeads. To remove dead cells, we recommend using density gradient centrifugation or the Dead Cell Removal Kit (# 130-090-101).

### Preparation of cells from leukapheresis material

1. Filter apheresis harvest through 30 μm nylon mesh (Pre-Separation Filters, 30 μm # 130-041-407), in order to remove cell clumps.
2. Wash cells once with buffer and resuspend in a final volume of 300 μL of buffer for up to 10<sup>8</sup> cells. Proceed to magnetic labeling.



### 2.3 Magnetic labeling

▲ Work fast, keep cells cold, and use pre-cooled solutions. This will prevent capping of antibodies on the cell surface and non-specific cell labeling.

▲ Volumes for magnetic labeling given below are for up to 10<sup>8</sup> total cells. When working with fewer than 10<sup>8</sup> cells, use the same volumes as indicated. When working with higher cell numbers, scale up all reagent volumes and total volumes accordingly (e.g. for 2×10<sup>8</sup> total cells, use twice the volume of all indicated reagent volumes and total volumes).

▲ For optimal performance it is important to obtain a single-cell suspension before magnetic labeling. Pass cells through 30 μm nylon mesh (Pre-Separation Filters, 30 μm # 130-041-407) to remove cell clumps which may clog the column. Moisten filter with buffer before use.

▲ The recommended incubation temperature is 2–8 °C. Higher temperatures and/or longer incubation times may lead to non-specific cell labeling. Working on ice may require increased incubation times.

1. Determine cell number.
2. Centrifuge cell suspension at 300×g for 10 minutes. Aspirate supernatant completely.
3. Resuspend cell pellet in 300 μL of buffer per 10<sup>8</sup> total cells.
4. Add 100 μL of FcR Blocking Reagent for up to 10<sup>8</sup> total cells.
5. Add 100 μL of CD34 MicroBeads per 10<sup>8</sup> total cells.
6. Mix well and incubate for 30 minutes in the refrigerator (2–8 °C).
7. (Optional) Add fluorochrome-conjugated CD34 antibody recognizing another epitope than QBEND/10 (e.g. clone AC136: CD34-PE (# 130-081-002)) or fluorochrome-conjugated CD45 antibody (e.g. CD45-FITC, # 130-080-202), and incubate for 5 minutes in the dark in the refrigerator (2–8 °C).
8. Wash cells by adding 5–10 mL of buffer per 10<sup>8</sup> cells and centrifuge at 300×g for 10 minutes. Aspirate supernatant completely.
9. Resuspend up to 10<sup>8</sup> cells in 500 μL of buffer.
  - ▲ **Note:** For higher cell numbers, scale up buffer volume accordingly.
  - ▲ **Note:** For depletion with LD Columns, resuspend up to 1.25×10<sup>8</sup> cells in 500 μL of buffer.
10. Proceed to magnetic separation (2.3).



## 2.4 Magnetic separation

▲ Choose an appropriate MACS Column and MACS Separator according to the number of total cells and the number of CD34<sup>+</sup> cells. For details refer to the table in section 1.4.

▲ Always wait until the column reservoir is empty before proceeding to the next step.

### Magnetic separation with MS or LS Columns

1. Place column in the magnetic field of a suitable MACS Separator. For details refer to the respective MACS Column data sheet.

2. Prepare column by rinsing with the appropriate amount of buffer:

MS: 500  $\mu$ L      LS: 3 mL

3. Apply cell suspension onto the column. Collect flow-through containing unlabeled cells.

4. Wash column with the appropriate amount of buffer. Collect unlabeled cells that pass through and combine with the flow-through from step 3.

MS: 3 $\times$ 500  $\mu$ L      LS: 3 $\times$ 3 mL

▲ **Note:** Perform washing steps by adding buffer aliquots only when the column reservoir is empty.

5. Remove column from the separator and place it on a suitable collection tube.

6. Pipette the appropriate amount of buffer onto the column. Immediately flush out the magnetically labeled cells by firmly pushing the plunger into the column.

MS: 1 mL      LS: 5 mL

7. (Optional) To increase the purity of CD34<sup>+</sup> cells, the eluted fraction can be enriched over a second MS or LS Column. Repeat the magnetic separation procedure as described in steps 1 to 6 by using a new column.

### Magnetic separation with XS Columns

For instructions on the column assembly and the separation refer to the XS Column data sheet.

### Magnetic separation with the autoMACS<sup>®</sup> Pro Separator or the autoMACS<sup>®</sup> Separator

▲ Refer to the respective user manual for instructions on how to use the autoMACS<sup>®</sup> Pro Separator or the autoMACS Separator.

▲ Buffers used for operating the autoMACS Pro Separator or the autoMACS Separator should have a temperature of  $\geq 10$  °C.

▲ Program choice depends on the isolation strategy, the strength of magnetic labeling, and the frequency of magnetically labeled cells. For details refer to the section describing the cell separation programs in the respective user manual.

### Magnetic separation with the autoMACS<sup>®</sup> Pro Separator

1. Prepare and prime the instrument.
2. Apply tube containing the sample and provide tubes for collecting the labeled and unlabeled cell fractions. Place sample tube in row A of the tube rack and the fraction collection tubes in rows B and C.
3. For a standard separation choose one of the following programs:

**Positive selection** of CD34<sup>+</sup> cells from peripheral blood, bone marrow or leukapheresis: **Posseld**

**Positive selection** of CD34<sup>+</sup> cells from cord blood: **Posseld2**

Collect positive fraction in row C of the tube rack.

### Magnetic separation with the autoMACS<sup>®</sup> Separator

1. Prepare and prime the instrument.
2. Apply tube containing the sample and provide tubes for collecting the labeled and unlabeled cell fractions. Place sample tube at the uptake port and the fraction collection tubes at port neg1 and port pos2.
3. For a standard separation choose one of the following programs:

**Positive selection** of CD34<sup>+</sup> cells from peripheral blood, bone marrow or leukapheresis: **Posseld**

**Positive selection** of CD34<sup>+</sup> cells from cord blood: **Posseld2**

Collect positive fraction from outlet port pos2.

### 2.5 (Optional) Evaluation of hematopoietic progenitor cell purity

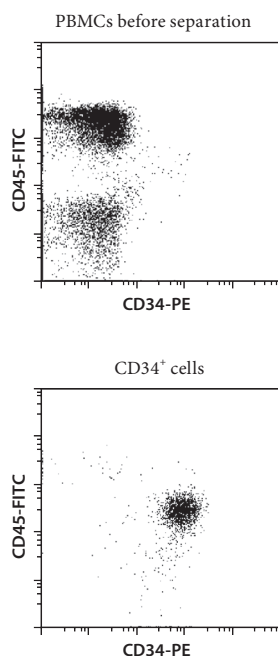
The purity of the isolated hematopoietic progenitor cells can be evaluated by flow cytometry or fluorescence microscopy. Analysis of CD34<sup>+</sup> cells can be accomplished by direct immunofluorescent staining using an antibody recognizing an epitope different from that recognized by the CD34 monoclonal antibody QBEND/10 (e.g. CD34-PE, clone: AC136, # 130-081-002).

For optimal discrimination of CD34<sup>+</sup> cells from other leukocytes, counterstain cells with an antibody against CD45 (e.g. CD45-FITC, # 130-080-202). CD34<sup>+</sup> cells express CD45 at a lower level as compared to lymphocytes.

Use the antibodies in appropriate concentrations as recommended by the manufacturers. Typically, staining for 5 minutes at 2–8 °C should be sufficient. After fluorescent staining, cells should be washed and resuspended in buffer.

### 3. Example of a separation using the CD34 MicroBeads

CD34 MicroBeads were reconstituted as described in 2.1. CD34<sup>+</sup> cells were isolated from human PBMCs using the CD34 MicroBead Kit, two MS Columns, and a MiniMACS™ Separator. Cells were fluorescently stained with CD34-PE (# 130-081-002) and CD45-FITC (# 130-080-202) and analyzed by flow cytometry using the MACSQuant® Analyzer. Cell debris and dead cells were excluded from the analysis based on scatter signals and propidium iodide fluorescence.



### 4. References

1. Giarratana, M. C. *et al.* (2005) *Ex vivo* generation of fully mature human red blood cells from hematopoietic stem cells. *Nat. Biotechnol.* 23: 69–74.
2. Timmermans, F. *et al.* (2007) Endothelial Outgrowth Cells Are Not Derived From CD133<sup>+</sup> Cells or CD45<sup>+</sup> Hematopoietic Precursors. *Arterioscler. Thromb. Basc. Biol.* 27: 1572–1579.
3. O, E. *et al.* (2011) Efficient nonadhesive *ex vivo* expansion of early endothelial progenitor cells derived from CD34<sup>+</sup> human cord blood fraction for effective therapeutic vascularization. *FASEB J.* 25: 159–169.
4. Wang, Z. Z. *et al.* (2007) Endothelial cells derived from human embryonic stem cells form durable blood vessels *in vivo*. *Nat. Biotechnol.* 25: 317–318.
5. Bonanno, G. *et al.* (2009) Interleukin-21 induces the differentiation of human umbilical cord blood CD34-lineage<sup>-</sup> cells into pseudomature lytic NK cells. *BMC Immunol.* 10: 46.

Refer to [www.miltenyibiotec.com](http://www.miltenyibiotec.com) for all data sheets and protocols. Miltenyi Biotec provides technical support worldwide. Visit [www.miltenyibiotec.com/local](http://www.miltenyibiotec.com/local) to find your nearest Miltenyi Biotec contact.

### Warnings

Reagents contain sodium azide. Under acidic conditions sodium azide yields hydrazoic acid, which is extremely toxic. Azide compounds should be diluted with running water before discarding. These precautions are recommended to avoid deposits in plumbing where explosive conditions may develop.

### Legal notices

#### Limited product warranty

Miltenyi Biotec B.V. & Co. KG and/or its affiliate(s) warrant this product to be free from material defects in workmanship and materials and to conform substantially with Miltenyi Biotec's published specifications for the product at the time of order, under normal use and conditions in accordance with its applicable documentation, for a period beginning on the date of delivery of the product by Miltenyi Biotec or its authorized distributor and ending on the expiration date of the product's applicable shelf life stated on the product label, packaging or documentation (as applicable) or, in the absence thereof, ONE (1) YEAR from date of delivery ("Product Warranty"). Miltenyi Biotec's Product Warranty is provided subject to the warranty terms as set forth in Miltenyi Biotec's General Terms and Conditions for the Sale of Products and Services available on Miltenyi Biotec's website at [www.miltenyibiotec.com](http://www.miltenyibiotec.com), as in effect at the time of order ("Product Warranty"). Additional terms may apply. BY USE OF THIS PRODUCT, THE CUSTOMER AGREES TO BE BOUND BY THESE TERMS.

THE CUSTOMER IS SOLELY RESPONSIBLE FOR DETERMINING IF A PRODUCT IS SUITABLE FOR CUSTOMER'S PARTICULAR PURPOSE AND APPLICATION METHODS.

#### Technical information

The technical information, data, protocols, and other statements provided by Miltenyi Biotec in this document are based on information, tests, or experience which Miltenyi Biotec believes to be reliable, but the accuracy or completeness of such information is not guaranteed. Such technical information and data are intended for persons with knowledge and technical skills sufficient to assess and apply their own informed judgment to the information. Miltenyi Biotec shall not be liable for any technical or editorial errors or omissions contained herein.

All information and specifications are subject to change without prior notice. Please contact Miltenyi Biotec Technical Support or visit [www.miltenyibiotec.com](http://www.miltenyibiotec.com) for the most up-to-date information on Miltenyi Biotec products.

#### Licenses

This product and/or its use may be covered by one or more pending or issued patents and/or may have certain limitations. Certain uses may be excluded by separate terms and conditions. Please contact your local Miltenyi Biotec representative or visit Miltenyi Biotec's website at [www.miltenyibiotec.com](http://www.miltenyibiotec.com) for more information.

The purchase of this product conveys to the customer the non-transferable right to use the purchased amount of the product in research conducted by the customer (whether the customer is an academic or for-profit entity). This product may not be further sold. Additional terms and conditions (including the terms of a Limited Use Label License) may apply.

CUSTOMER'S USE OF THIS PRODUCT MAY REQUIRE ADDITIONAL LICENSES DEPENDING ON THE SPECIFIC APPLICATION. THE CUSTOMER IS SOLELY RESPONSIBLE FOR DETERMINING FOR ITSELF WHETHER IT HAS ALL APPROPRIATE LICENSES IN PLACE. Miltenyi Biotec provides no warranty that customer's use of this product does not and will not infringe intellectual property rights owned by a third party. BY USE OF THIS PRODUCT, THE CUSTOMER AGREES TO BE BOUND BY THESE TERMS.

#### Trademarks

autoMACS, MACS, MACSQuant, MidiMACS, the Miltenyi Biotec logo, MiniMACS, OctoMACS, QuadroMACS, SuperMACS, and VarioMACS are registered trademarks or trademarks of Miltenyi Biotec and/or its affiliates in various countries worldwide. All other trademarks mentioned in this publication are the property of their respective owners and are used for identification purposes only.

Ficoll-Paque is a trademark of GE Healthcare companies.

Copyright © 2020 Miltenyi Biotec and/or its affiliates. All rights reserved.