

Index

1. Description
 - 1.1 Principle of MACS[®] separation
 - 1.2 Background and product applications
 - 1.3 Reagent and instrument requirements
2. Protocol
 - 2.1 Sample preparation
 - 2.2 Magnetic labeling
 - 2.3 Magnetic separation
3. Example of a separation using CD20 MicroBeads
4. Reference

1. Description

| | |
|-----------------------|--|
| Components | 2 mL CD20 MicroBeads, non-human primate: MicroBeads conjugated to monoclonal anti-human CD20 antibodies (isotype: mouse IgG1). |
| Size | For 10 ⁹ total cells, up to 100 separations. |
| Product format | MACS [®] MicroBeads are supplied as a suspension containing stabilizer and 0.05% sodium azide. |
| Storage | Store protected from light at 4–8 °C. Do not freeze. The expiration date is indicated on the vial label. |

This product is applicable for the separation of cells from rhesus monkey (*Macaca mulatta*). The CD20 antibody has been tested to cross-react with cynomolgus monkey (*Macaca fascicularis*). Cross-reactivity with other non-human primates has not been tested.

1.1 Principle of MACS[®] separation

First the CD20⁺ cells are magnetically labeled with CD20 MicroBeads. Then the cell suspension is loaded onto a MACS[®] Column which is placed in the magnetic field of a MACS Separator. The magnetically labeled CD20⁺ cells are retained in the column. The unlabeled cells run through, this cell fraction is depleted of CD20⁺ cells. After removal of the column from the magnetic field, the magnetically retained CD20⁺ cells can be eluted as the positively selected cell fraction.

1.2 Background and product applications

CD20 MicroBeads are developed for the separation of non-human primate cells based on the expression of the CD20 antigen. CD20 is expressed on rhesus monkey B cells.¹

Examples of applications

- Positive selection or depletion of cells expressing CD20 antigen.
- Isolation or depletion of B cells from rhesus monkey peripheral blood mononuclear cells (PBMCs) or single-cell suspensions from tissue.

1.3 Reagent and instrument requirements

- Buffer (degassed): Prepare a solution containing PBS (phosphate buffered saline) pH 7.2, 0.5% BSA (bovine serum albumin) and 2 mM EDTA by diluting MACS BSA Stock Solution (# 130-091-376) 1:20 with autoMACS[™] Rinsing Solution (130-091-222). Keep buffer cold (4–8 °C).

▲ **Note:** EDTA can be replaced by other supplements such as anticoagulant citrate dextrose formula-A (ACD-A) or citrate phosphate dextrose (CPD). BSA can be replaced by other proteins such as human serum albumin, human serum or fetal calf serum. Buffers or media containing Ca²⁺ or Mg²⁺ are not recommended for use.

- MACS Columns and MACS Separators: CD20⁺ cells can be enriched by using MS, LS or XS Columns (positive selection). CD20 MicroBeads can be used for depletion of CD20⁺ cells on LD, CS or D Columns. Positive selection or depletion can also be performed by using the autoMACS Separator.

▲ **Note:** Column adapters are required to insert certain columns into VarioMACS or SuperMACS. For details, see MACS Separator data sheets.

| Column | max. number of labeled cells | max. number of total cells | Separator |
|--|------------------------------|----------------------------|--|
| Positive selection | | | |
| MS | 10 ⁷ | 2×10 ⁸ | MiniMACS, OctoMACS, VarioMACS, SuperMACS |
| LS | 10 ⁸ | 2×10 ⁹ | MidiMACS, QuadroMACS, VarioMACS, SuperMACS |
| XS | 10 ⁹ | 2×10 ¹⁰ | SuperMACS |
| Depletion | | | |
| LD | 10 ⁸ | 5×10 ⁸ | MidiMACS, QuadroMACS, VarioMACS, SuperMACS |
| CS | 2×10 ⁸ | | VarioMACS, SuperMACS |
| D | 10 ⁹ | | SuperMACS |
| Positive selection or depletion | | | |
| autoMACS | 2×10 ⁸ | 4×10 ⁹ | autoMACS |

- (Optional) Fluorochrome-conjugated CD20 antibody for flow-cytometric analysis, e.g CD20-FITC (# 130-091-108) or CD20-PE # (130-091-109).
- (Optional) PI (propidium iodide) or 7-AAD for the flow-cytometric exclusion of dead cells.
- (Optional) Pre-Separation Filters (# 130-041-407) to remove cell clumps.

2. Protocol

2.1 Sample preparation

When working with rhesus monkey anticoagulated peripheral blood or buffy coat, PBMCs can be isolated by density gradient centrifugation, e.g. Ficoll-Paque™, as with human samples (see "General Protocols" in the User Manuals or visit www.miltenyibiotec.com/protocols).

▲ **Note:** Remove platelets after density gradient separation: Resuspend cell pellet in buffer and centrifuge at 200×g for 10–15 minutes at 20 °C. Carefully remove supernatant. Repeat washing step and carefully remove supernatant.

When working with tissue, prepare a single-cell suspension by using a standard preparation method (see "General Protocols" in the User Manuals or visit www.miltenyibiotec.com/protocols).

▲ **Note:** Dead cells may bind non-specifically to MACS MicroBeads. To remove dead cells, we recommend using density gradient centrifugation or using the Dead Cell Removal Kit (# 130-090-101).



2.2 Magnetic labeling

▲ Work fast, keep the cells cold, and use pre-cooled solutions. This will prevent capping of antibodies on the cell surface and a non-specific cell labeling.

▲ Volumes for magnetic labeling given below are for 10^7 total cells. When working with fewer than 10^7 cells, use the same volumes as indicated. When working with higher cell numbers, scale up all reagent volumes and total volumes, accordingly (e.g. for 2×10^7 total cells, use twice the volume of all indicated reagent volumes and total volumes).

▲ For an optimal performance it is important to obtain a single cell suspension before magnetic separation. Pass cells through 30 µm nylon mesh (Pre-Separation Filters # 130-041-407) to remove cell clumps which may clog the column.

1. Determine cell number.
2. Centrifuge at 300×g for 10 minutes. Pipette off supernatant completely.
3. Resuspend cell pellet in 80 µL of buffer per 10^7 total cells.
4. Add 20 µL of CD20 MicroBeads per 10^7 total cells.
5. Mix well and incubate for 15 minutes at 4–8 °C.
▲ **Note:** Working on ice requires increased incubation time. Higher temperatures and longer incubation times lead to non-specific cell labeling.
6. (Optional) Add staining antibodies, e.g. add 10 µL of CD20-FITC (# 130-091-108) or CD20-PE (# 130-091-109) and incubate for 5 minutes at 4–8 °C.
7. Wash cells by adding 1–2 mL of buffer per 10^7 cells and centrifuge at 300×g for 10 minutes. Pipette off supernatant completely.
8. Resuspend up to 10^8 cells in 500 µL of buffer.
▲ **Note:** For higher cell numbers, scale up accordingly.
▲ **Note:** For depletion with LD Columns, resuspend up to 1.25×10^8 cells in 500 µL of buffer.
9. Proceed to magnetic separation (2.3).



2.3 Magnetic separation

▲ Choose an appropriate MACS Column and MACS Separator according to the number of total cells and the number of CD20⁺ cells (see table 1.3).

Magnetic separation with MS or LS Columns

1. Place column in the magnetic field of a suitable MACS Separator (see "Column data sheets").
2. Prepare column by rinsing with appropriate amount of buffer:
MS: 500 µL LS: 3 mL.
3. Apply cell suspension onto the column.
4. Collect unlabeled cells which pass through and wash column with appropriate amount of buffer. Perform washing steps by adding buffer three times, each time once the column reservoir is empty.
MS: 3×500 µL LS: 3×3 mL.
Collect total effluent. This is the unlabeled cell fraction.
5. Remove column from the separator and place it on a suitable collection tube.
6. Pipette appropriate amount of buffer onto the column. Immediately flush out fraction with the magnetically labeled cells by firmly applying the plunger, supplied with the column.
MS: 1 mL LS: 5 mL.

▲ **Note:** To increase the purity of the magnetically labeled fraction, it can be passed over a new, freshly prepared column.

Magnetic separation with XS Columns

For instructions on the column assembly and the separation, refer to the "XS Column data sheet".

Depletion with LD Columns

1. Place LD Column in the magnetic field of a suitable MACS Separator (see "LD Column data sheet").
2. Prepare column by rinsing with 2 mL of buffer.
3. Apply cell suspension onto the column.
4. Collect unlabeled cells which pass through and wash column with 2×1 mL of buffer. Collect total effluent. This is the unlabeled cell fraction.

Depletion with CS Columns

1. Assemble CS Column and place it in the magnetic field of a suitable MACS Separator (see "CS Column data sheet").
2. Prepare column by filling and rinsing with 60 mL of buffer. Attach a 22G flow resistor to the 3-way-stopcock of the assembled column (see "CS Column data sheet").
3. Apply cell suspension onto the column.
4. Collect unlabeled cells which pass through and wash column with 30 mL buffer from top. Collect total effluent. This is the unlabeled cell fraction.

Depletion with D Columns

For instructions on column assembly and separation, refer to the "D Column data sheet".

Magnetic separation with autoMACS™ Separator

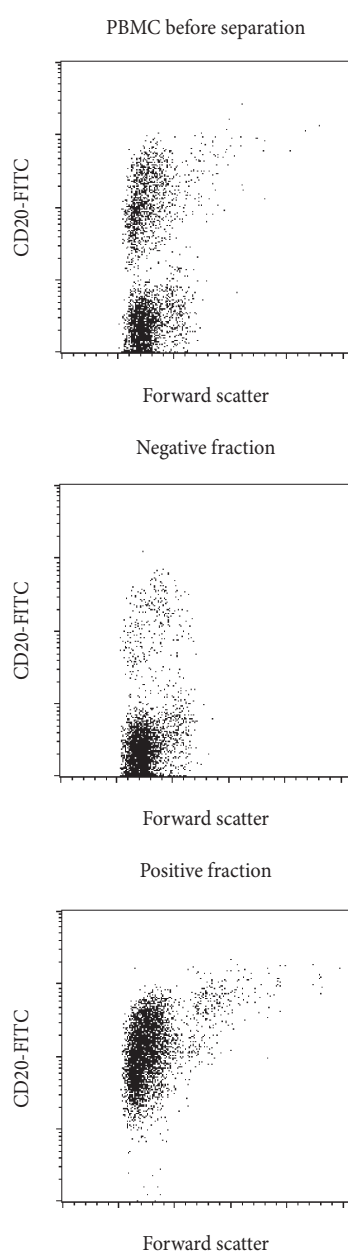
▲ Refer to the autoMACS™ User Manual for instructions on how to use the autoMACS Separator.

1. Prepare and prime autoMACS Separator.
2. Place tube containing magnetically labeled cells in autoMACS Separator. Choose a separation program according to the recommendations in the autoMACS User Manual.

▲ **Note:** Program choice depends on the isolation strategy, the strength of magnetic labeling and the frequency of magnetically labeled cells. For details see autoMACS User Manual: "autoMACS Cell Separation Programs".

3. Example of a separation using CD20 MicroBeads

Separation of rhesus monkey PBMCs using MACS CD20 MicroBeads and a MiniMACS™ Separator with an MS Column. The cells are fluorescently stained with CD20-FITC (# 130-091-108). Cell debris and dead cells were excluded from the analysis based on scatter signals and PI fluorescence.



4. Reference

1. Sopper, S; Stahl-Hennig, C; Demuth, M; Johnston, ICD; Dörries, R; ter Meulen, V (1997) Lymphocyte Subsets and Expression of Differentiation Markers in Blood and Lymphoid Organs of Rhesus Monkeys. Cytometry 29: 351–362.

Refer to www.miltenyibiotec.com for all data sheets and protocols. Miltenyi Biotec provides technical support worldwide. Visit www.miltenyibiotec.com/local to find your nearest Miltenyi Biotec contact.

Legal notices

Limited product warranty

Miltenyi Biotec B.V. & Co. KG and/or its affiliate(s) warrant this product to be free from material defects in workmanship and materials and to conform substantially with Miltenyi Biotec's published specifications for the product at the time of order, under normal use and conditions in accordance with its applicable documentation, for a period beginning on the date of delivery of the product by Miltenyi Biotec or its authorized distributor and ending on the expiration date of the product's applicable shelf life stated on the product label, packaging or documentation (as applicable) or, in the absence thereof, ONE (1) YEAR from date of delivery ("Product Warranty"). Miltenyi Biotec's Product Warranty is provided subject to the warranty terms as set forth in Miltenyi Biotec's General Terms and Conditions for the Sale of Products and Services available on Miltenyi Biotec's website at www.miltenyibiotec.com, as in effect at the time of order ("Product Warranty"). Additional terms may apply. BY USE OF THIS PRODUCT, THE CUSTOMER AGREES TO BE BOUND BY THESE TERMS. THE CUSTOMER IS SOLELY RESPONSIBLE FOR DETERMINING IF A PRODUCT IS SUITABLE FOR CUSTOMER'S PARTICULAR PURPOSE AND APPLICATION METHODS.

Technical information

The technical information, data, protocols, and other statements provided by Miltenyi Biotec in this document are based on information, tests, or experience which Miltenyi Biotec believes to be reliable, but the accuracy or completeness of such information is not guaranteed. Such technical information and data are intended for persons with knowledge and technical skills sufficient to assess and apply their own informed judgment to the information. Miltenyi Biotec shall not be liable for any technical or editorial errors or omissions contained herein.

All information and specifications are subject to change without prior notice. Please contact Miltenyi Biotec Technical Support or visit www.miltenyibiotec.com for the most up-to-date information on Miltenyi Biotec products.

Licenses

This product and/or its use may be covered by one or more pending or issued patents and/or may have certain limitations. Certain uses may be excluded by separate terms and conditions. Please contact your local Miltenyi Biotec representative or visit Miltenyi Biotec's website at www.miltenyibiotec.com for more information.

The purchase of this product conveys to the customer the non-transferable right to use the purchased amount of the product in research conducted by the customer (whether the customer is an academic or for-profit entity). This product may not be further sold. Additional terms and conditions (including the terms of a Limited Use Label License) may apply.

CUSTOMER'S USE OF THIS PRODUCT MAY REQUIRE ADDITIONAL LICENSES DEPENDING ON THE SPECIFIC APPLICATION. THE CUSTOMER IS SOLELY RESPONSIBLE FOR DETERMINING FOR ITSELF WHETHER IT HAS ALL APPROPRIATE LICENSES IN PLACE. Miltenyi Biotec provides no warranty that customer's use of this product does not and will not infringe intellectual property rights owned by a third party. BY USE OF THIS PRODUCT, THE CUSTOMER AGREES TO BE BOUND BY THESE TERMS.

Trademarks

autoMACS, MACS, MidiMACS, the Miltenyi Biotec logo, MiniMACS, OctoMACS, QuadroMACS, SuperMACS, and VarioMACS are registered trademarks or trademarks of Miltenyi Biotec and/or its affiliates in various countries worldwide. All other trademarks mentioned in this publication are the property of their respective owners and are used for identification purposes only.

Ficoll-Paque is a trademark of GE Healthcare companies.

Copyright © 2020 Miltenyi Biotec and/or its affiliates. All rights reserved.