

Contents

1. Description
 - 1.1 Principle of the MACS® Separation
 - 1.2 Background information
 - 1.3 Applications
 - 1.4 Reagent and instrument requirements
2. Protocol
 - 2.1 Sample preparation
 - 2.2 Magnetic labeling
 - 2.3 Magnetic separation
3. Example of a separation using the Adult Neuron Isolation Kit

Warnings

Reagents contain sodium azide. Under acidic conditions sodium azide yields hydrazoic acid, which is extremely toxic. Azide compounds should be diluted with running water before discarding. These precautions are recommended to avoid deposits in plumbing where explosive conditions may develop.

1. Description

This product is for research use only.

Components	<p>1 mL Adult Non-Neuronal Cell Biotin-Antibody Cocktail, mouse: monoclonal antibodies against non-neuronal cells conjugated to biotin.</p> <p>1 mL Anti-Biotin MicroBeads: MicroBeads conjugated to anti-biotin monoclonal antibodies (isotype: mouse IgG1).</p> <p>or</p> <p>100 µL Adult Non-Neuronal Cell Biotin-Antibody Cocktail, mouse: monoclonal antibodies against non-neuronal cells conjugated to biotin.</p> <p>100 µL Anti-Biotin MicroBeads: MicroBeads conjugated to anti-biotin monoclonal antibodies (isotype: mouse IgG1).</p>
Capacity	<p>2× 1 mL for 5×10⁸ total cells, up to 50 separations or</p> <p>2× 100 µL for 5×10⁷ total cells, up to 5 separations.</p>
Product format	All reagents are supplied in buffer containing stabilizer and 0.05% sodium azide.
Storage	Store protected from light at 2–8 °C. Do not freeze. The expiration date is indicated on the vial label.

1.1 Principle of the MACS® Separation

Using the Adult Neuron Isolation Kit, mouse neuronal cells from adult mice are isolated by depletion of non-neuronal cells. Non-neuronal cells are magnetically labeled with biotin-conjugated monoclonal antibodies specific for non-neuronal cells followed by anti-biotin monoclonal antibodies conjugated to MicroBeads. The magnetically labeled non-neuronal cells are depleted by retaining them within a MACS® Column in the magnetic field of a MACS Separator, while the unlabeled neuronal cells run through.

1.2 Background information

The Adult Neuron Isolation Kit, mouse is an indirect magnetic labeling system for the isolation of untouched neurons from cell suspensions of mouse neural tissue older than postnatal day 7 (P7). Non-neuronal cells like astrocytes, oligodendrocytes, microglia, endothelial cells, fibroblasts, except erythrocytes, are indirectly magnetically labeled by using biotin-conjugated antibodies specific for non-neuronal cells in combination with Anti-Biotin MicroBeads. Isolation of highly pure unlabeled neuronal cells is achieved by depletion of the magnetically labeled cells. The cell number and composition of the neuronal cell fraction varies with the mouse age and the brain region used for cell isolation.

For optimal results, it is recommended to use the Adult Brain Dissociation Kit, mouse and rat (# 130-107-677) prior to this kit.

1.3 Applications

- Untouched isolation of mouse neuronal cells from neural cell suspensions of adult mice.

1.4 Reagent and instrument requirements

- DPBS/BSA buffer: Prepare a solution containing Dulbecco's phosphate-buffered saline (DPBS) with Ca²⁺ and Mg²⁺ and 0.5% bovine serum albumin (BSA) by diluting MACS BSA Stock Solution (# 130-091-376) 1:20 with DPBS. Keep buffer cold (2–8 °C). Degas buffer before use, as air bubbles could block the column. Always use freshly prepared buffer. Do **not use** autoMACS® Running Buffer or MACSQuant® Running Buffer as they contain a small amount of sodium azide that could affect the results.

▲ **Note:** BSA can be replaced by other proteins such as mouse serum albumin, mouse serum, or fetal bovine serum (FBS).

- MACS Columns and MACS Separators: Depletion of non-neuronal cells can be performed on an LS Column. Depletion can also be performed by using the autoMACS Pro Separator.

Column	Max. number of labeled cells	Max. number of total cells	Separator
LS	2×10 ⁷	4×10 ⁷	MidiMACS, QuadroMACS
autoMACS	5×10 ⁷	10 ⁸	autoMACS Pro

- Adult Brain Dissociation Kit, mouse and rat (# 130-107-677) for the generation of single-cell suspension from mouse brain tissue older than P7.
- Pre-Separation Filters (70 µm) (# 130-095-823) to remove cell clumps.
- Red Blood Cell Lysis Solution (10×) (# 130-094-183)
- (Optional) Propidium Iodide Solution (# 130-093-233) or 7-AAD Staining Solution (# 130-111-568) for flow cytometric exclusion of dead cells without fixation.
- gentleMACS™ Octo Dissociator with Heaters (# 130-096-427) and gentleMACS C Tubes (# 130-093-237, # 130-096-334).
- (Optional) MACSmix™ Tube Rotator (# 130-090-753)
- (Optional) MACS® Neuro Medium (# 130-093-570) and MACS NeuroBrew®-21 (# 130-093-566) for the cultivation of neuronal cells.
- (Optional) Fluorochrome-conjugated antibodies for flow cytometric analysis. For more information about antibodies refer to www.miltenyibiotec.com/antibodies.

2. Protocol

2.1 Sample preparation

For preparation of single-cell suspensions from mouse neural tissues older than P7, the Adult Brain Dissociation Kit, mouse and rat, in combination with the gentleMACS Octo Dissociators with Heaters are used. For subsequent cell separation and cultivation it is recommended to dissociate at least two adult mouse brains (approximately 800 mg in total).

For details refer to the protocols section at www.miltenyibiotec.com/protocols.



2.2 Magnetic labeling

▲ Work fast, keep cells cold, and use pre-cooled solutions. This will prevent capping of antibodies on the cell surface and non-specific cell labeling.

▲ Volumes for magnetic labeling given below are for up to 10^7 total cells. For best performance it is recommended to use at least 5×10^6 cells. When working with fewer than 10^7 cells, use the same volumes as indicated. When working with higher cell numbers, scale up all reagent volumes and total volumes accordingly (e.g. for 2×10^7 total cells, use twice the volume of all indicated reagent volumes and total volumes).

▲ For optimal performance it is important to obtain a single-cell suspension before magnetic labeling. Pass cells through 70 µm nylon mesh (Pre-Separation Filters (70 µm), # 130-095-823) to remove cell clumps which may clog the column. Moisten filter with buffer before use.

▲ The recommended incubation temperature is 2–8 °C. Higher temperatures and/or longer incubation times may lead to non-specific cell labeling. Working on ice may require increased incubation times.

1. Determine cell number.
2. Centrifuge cell suspension at $300 \times g$ for 10 minutes. Aspirate supernatant completely.

3. Add 80 µL of buffer per 10^7 total cells to the cell pellet.
4. Add 20 µL of the Adult Non-Neuronal Cell Biotin-Antibody Cocktail per 10^7 total cells.
5. Mix well. Do not vortex. Incubate for 5 minutes in the refrigerator (2–8 °C).
6. Wash cells by adding 1 mL of buffer per 10^7 cells and centrifuge at $300 \times g$ for 10 minutes. Aspirate supernatant completely.
7. Add 80 µL of buffer per 10^7 total cells to the cell pellet.
8. Add 20 µL of Anti-Biotin MicroBeads per 10^7 total cells.
9. Mix well. Do not vortex. Incubate for 10 minutes in the refrigerator (2–8 °C).
10. Adjust volume to 500 µL for up to 10^7 cells with buffer. Do not centrifuge!
▲ **Note:** For higher cell numbers, scale up buffer volume accordingly.
11. Proceed to magnetic separation (2.3).



2.3 Magnetic separation

▲ Always wait until the column reservoir is empty before proceeding to the next step.

Depletion with LS Columns

1. Place LS Column in the magnetic field of a suitable MACS Separator. For details refer to the LS Column data sheet.
2. Prepare column by rinsing with 3 mL of buffer.
3. Apply cell suspension onto the column. Collect flow-through containing unlabeled cells (neuronal cells).
4. Wash column with 2×1 mL of buffer. Collect unlabeled cells (neuronal cells) that pass through and combine with the flow-through from step 3.
▲ **Note:** Perform washing steps by adding buffer aliquots as soon as the column reservoir is empty.
5. (Optional) Remove LS Column from the separator and place it on a suitable collection tube.
6. (Optional) Pipette 3 mL of buffer onto the column. Immediately flush out the magnetically labeled cells (non-neuronal cells) by firmly pushing the plunger into the column.

Magnetic separation with the autoMACS® Pro Separator

▲ Refer to the respective user manual for instructions on how to use the autoMACS® Pro Separator.

▲ Use DPBS/BSA buffer for magnetic separation with the autoMACS Pro Separator. Buffers used for operating the autoMACS Pro Separator should have a temperature of ≥ 10 °C.

1. Prepare and prime the instrument.
2. Apply tube containing the sample and provide tubes for collecting the labeled and unlabeled cell fractions. Place sample tube in row A of the tube rack and the fraction collection tubes in rows B and C.
3. For a standard separation choose the following program:

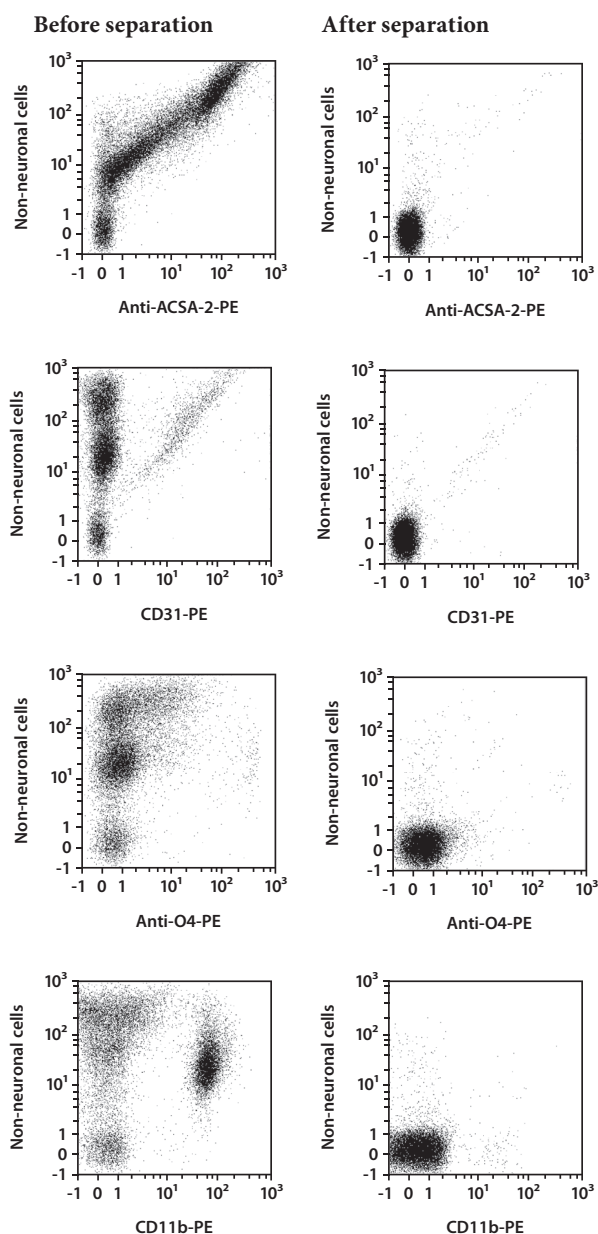
Depletion: Depl05

Collect negative fraction in row B of the tube rack.

3. Example of a separation using Adult Neuron Isolation Kit

Neuronal cells were isolated from brains of seven weeks-old CD-1 mice. Adult mouse brains were dissociated using the Adult Brain Dissociation Kit, mouse and rat. The neurons were isolated using the Adult Neuron Isolation Kit, mouse, LS Columns, and a MidiMACS™ Separator. Cells were fluorescently stained with an antibody cocktail specific for non-neuronal cells and the astrocyte-specific antibody Anti-ACSA-2-PE, the oligodendrocyte-specific antibody Anti-O4-PE, the microglia-specific antibody CD11b-PE and the endothelial cell-specific antibody CD31-PE. Cells were analyzed by flow cytometry using the MACSQuant® Analyzer 10. Cell debris and dead cells were excluded from the analysis based on scatter signals and propidium iodide fluorescence.

For further results and information refer to www.miltenyibiotec.com/130-126-602.



Refer to www.miltenyibiotec.com for all data sheets and protocols. Miltenyi Biotec provides technical support worldwide. Visit www.miltenyibiotec.com/local to find your nearest Miltenyi Biotec contact.

Legal notices

Limited product warranty

Miltenyi Biotec B.V. & Co. KG and/or its affiliate(s) warrant this product to be free from material defects in workmanship and materials and to conform substantially with Miltenyi Biotec's published specifications for the product at the time of order, under normal use and conditions in accordance with its applicable documentation, for a period beginning on the date of delivery of the product by Miltenyi Biotec or its authorized distributor and ending on the expiration date of the product's applicable shelf life stated on the product label, packaging or documentation (as applicable) or, in the absence thereof, ONE (1) YEAR from date of delivery ("Product Warranty"). Miltenyi Biotec's Product Warranty is provided subject to the warranty terms as set forth in Miltenyi Biotec's General Terms and Conditions for the Sale of Products and Services available on Miltenyi Biotec's website at www.miltenyibiotec.com, as in effect at the time of order ("Product Warranty"). Additional terms may apply. BY USE OF THIS PRODUCT, THE CUSTOMER AGREES TO BE BOUND BY THESE TERMS.

THE CUSTOMER IS SOLELY RESPONSIBLE FOR DETERMINING IF A PRODUCT IS SUITABLE FOR CUSTOMER'S PARTICULAR PURPOSE AND APPLICATION METHODS.

Technical information

The technical information, data, protocols, and other statements provided by Miltenyi Biotec in this document are based on information, tests, or experience which Miltenyi Biotec believes to be reliable, but the accuracy or completeness of such information is not guaranteed. Such technical information and data are intended for persons with knowledge and technical skills sufficient to assess and apply their own informed judgment to the information. Miltenyi Biotec shall not be liable for any technical or editorial errors or omissions contained herein.

All information and specifications are subject to change without prior notice. Please contact Miltenyi Biotec Technical Support or visit www.miltenyibiotec.com for the most up-to-date information on Miltenyi Biotec products.

Licenses

This product and/or its use may be covered by one or more pending or issued patents and/or may have certain limitations. Certain uses may be excluded by separate terms and conditions. Please contact your local Miltenyi Biotec representative or visit Miltenyi Biotec's website at www.miltenyibiotec.com for more information.

The purchase of this product conveys to the customer the non-transferable right to use the purchased amount of the product in research conducted by the customer (whether the customer is an academic or for-profit entity). This product may not be further sold. Additional terms and conditions (including the terms of a Limited Use Label License) may apply.

CUSTOMER'S USE OF THIS PRODUCT MAY REQUIRE ADDITIONAL LICENSES DEPENDING ON THE SPECIFIC APPLICATION. THE CUSTOMER IS SOLELY RESPONSIBLE FOR DETERMINING FOR ITSELF WHETHER IT HAS ALL APPROPRIATE LICENSES IN PLACE. Miltenyi Biotec provides no warranty that customer's use of this product does not and will not infringe intellectual property rights owned by a third party. BY USE OF THIS PRODUCT, THE CUSTOMER AGREES TO BE BOUND BY THESE TERMS.

Trademarks

autoMACS, gentleMACS, MACS, MACSmix, MACSQuant, MidiMACS, the Miltenyi Biotec logo, NeuroBrew, and QuadroMACS are registered trademarks or trademarks of Miltenyi Biotec and/or its affiliates in various countries worldwide. All other trademarks mentioned in this publication are the property of their respective owners and are used for identification purposes only.

Copyright © 2020 Miltenyi Biotec and/or its affiliates. All rights reserved.