

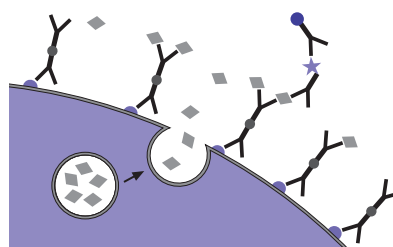


Miltényi Biotec

## IL-22 Secretion Assay – Detection Kit (PE) human

For 100 tests with  $10^6$  cells

Order no. 130-108-278



Unless otherwise specifically indicated,  
Miltényi Biotec products and services are for research use only  
and not for diagnostic or therapeutic use.



Miltényi Biotec

**Miltényi Biotec B.V. & Co. KG**  
Friedrich-Ebert-Straße 68, 51429 Bergisch Gladbach, Germany  
Phone +49 2204 8306-0, Fax +49 2204 85197  
macsde@miltényi.com, [www.miltényibiotec.com](http://www.miltényibiotec.com)

140-004-902.03

### Contents

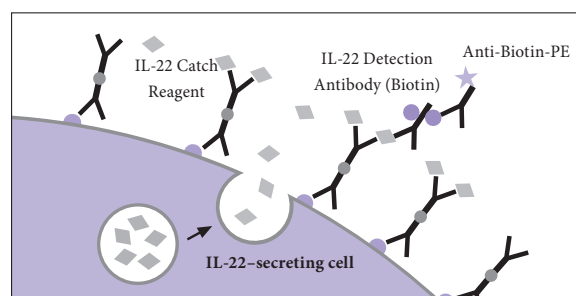
### 1. Description

#### Contents

1. Description
  - 1.1 Principle of the IL-22 Secretion Assay
  - 1.2 Background information
  - 1.3 Applications
  - 1.4 Reagent and instrument requirements
2. Protocol overview
3. Experimental setup
  - 3.1 Controls
  - 3.2 Kinetics of restimulation and proposed time schedule
  - 3.3 Counterstaining of cytokine-secreting cells
  - 3.4 Two-color cytokine analysis
  - 3.5 Combination with peptide-MHC tetramer staining
  - 3.6 Detection with very low frequencies
4. Protocol for the IL-22 Secretion Assay
  - 4.1 Cell preparation
  - 4.2 *In vitro* stimulation
  - 4.3 Cytokine Secretion Assay
5. Detection and analysis of IL-22-secreting T cells
6. Appendix: Flask and dish sizes for *in vitro* stimulation

#### 1. Description

<b>Components</b>	<b>1 mL IL-22 Catch Reagent:</b> anti-IL-22 monoclonal antibody (rat IgG2a) conjugated to CD45-specific monoclonal antibody (mouse IgG2a). <b>1 mL IL-22 Detection Antibody (Biotin):</b> anti-IL-22 monoclonal antibody (isotype: rat IgG2a) conjugated to biotin. <b>0.2 mL Anti-Biotin-PE:</b> monoclonal anti-biotin antibody conjugated to R-phycoerythrin (PE).
<b>Capacity</b>	For 100 tests with $10^6$ cells.
<b>Product format</b>	All components are supplied in buffer containing stabilizer and 0.05% sodium azide.
<b>Storage</b>	Store protected from light at 2–8 °C. Do not freeze. The expiration date is indicated on the vial label



### 1.1 Principle of the IL-22 Secretion Assay

IL-22-producing cells, such as certain subtypes of T cells, dendritic cells (DCs), NK cells and other innate lymphoid cells are analyzed using the IL-22 Secretion Assay starting from whole blood, peripheral blood mononuclear cells (PBMCs), or other lymphocyte-containing single-cell preparations. Depending on the cell type, cells might be stimulated with either aryl hydrocarbon receptor ligands, cytokines (e.g. MACS® Cytokines IL-6, IL-12, IL-18, IL-23, TNF- $\alpha$ ), a polyclonal stimulus, such as PMA/ionomycin or a specific peptide, protein, or other antigen preparations (e.g. PepTivator® Peptide Pools). Subsequently, an IL-22-specific Catch Reagent is attached to the cell surface of all leukocytes. The cells are then incubated for a short time at 37 °C to allow cytokine secretion. The secreted IL-22 binds to the IL-22 Catch Reagent

on the cytokine-secreting cells. These cells are subsequently labeled with a second IL-22-specific antibody, the IL-22 Detection Antibody conjugated to biotin and Anti-Biotin-PE for sensitive detection by flow cytometry.

Since viable cells are analyzed, non-specific background can be minimized by dead cell exclusion. This provides highest sensitivity of analysis.

### 1.2 Background and product applications

Interleukin 22 (IL-22) is a pro-inflammatory cytokine of the IL-10 superfamily. As such it is essential for the stimulation of inflammatory responses. Acting mainly on non-hematopoietic cells, such as hepatocytes, keratinocytes, and lung and intestinal epithelial cells and is known to be expressed in many chronic inflammatory conditions, including *Psoriasis* and rheumatoid arthritis. However, depending on the inflammatory context, IL-22 also has a protective role in inflammation and in tissue repair. IL-22 is expressed by both the adaptive arm of the immune system, such as CD4<sup>+</sup> T cell subsets, as well as by innate lymphocytes, including NK cells, lymphoid tissue inducer (LTi) and LTi-like cells.

### 1.3 Applications

- Detection of viable IL-22-secreting lymphocytes from whole blood. The IL-22 Secretion Assay can be started directly from whole blood. For details on the procedure refer to [www.miltenyibiotec.com](http://www.miltenyibiotec.com).
- Detection of IL-22-secreting cells for enumeration and phenotypic characterization.
- Monitoring and analysis of IL-22-mediated T cell immunity, for example, in chronic inflammation, autoimmunity, and infection.
- Analysis of IL-22-secreting cells in the context of inflammatory protection and tissue repair.

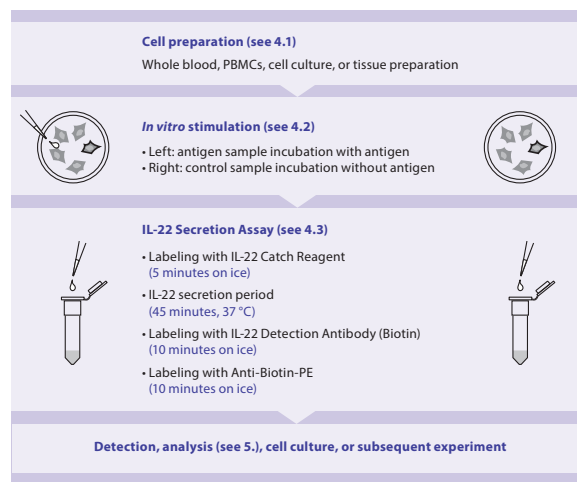
### 1.4 Reagent and instrument requirements

- **Buffer:** Prepare a solution containing phosphate-buffered saline (PBS), pH 7.2, 0.5% bovine serum albumin (BSA), and 2 mM EDTA by diluting MACS® BSA Stock Solution (# 130-091-376) 1:20 with autoMACS® Rinsing Solution (# 130-091-222). Keep buffer cold (2–8 °C). Degas buffer before use, as air bubbles could block the column.

▲ **Note:** EDTA can be replaced by other supplements such as anticoagulant citrate dextrose formula-A (ACD-A) or citrate phosphate dextrose (CPD). BSA can be replaced by other proteins such as human serum albumin, human serum, or fetal bovine serum (FBS). Buffers or media containing Ca<sup>2+</sup> or Mg<sup>2+</sup> are not recommended for use.

- Culture medium, e.g., RPMI 1640 with stable glutamin, containing 5% human serum, like autologous or AB serum (do not use BSA or FBS because of non-specific stimulation!).
- (Optional) Cell stimulation reagents, for example, CytoStim (# 130-092-172, # 130-092-173), CMV pp65 – Recombinant Protein (# 130-091-823, # 130-091-824), or PepTivator® – CMV pp65 (# 130-093-435, # 130-093-438) for restimulation of human T cells. For details see the respective data sheet. For more information about other antigens see [www.miltenyibiotec.com](http://www.miltenyibiotec.com).
- (Optional) For detection of activated T cells with CD154, the incubation with CD40 pure – functional grade is recommended to avoid downregulation of CD154 expression.
- Propidium Iodide Solution (# 130-093-233) or 7-AAD Staining Solution (# 130-111-568) for flow cytometric exclusion of dead cells without fixation. For cell fixation and flow cytometric exclusion of dead cells, the Fixation and Dead Cell Discrimination Kit (# 130-091-163) is recommended.
- (Optional) Staining reagents such as CD4-FITC, CD154-APC, CD14-PerCP-Vio® 700, CD8-FITC.
- Refrigerated centrifuge (2–8 °C).
- Rotation device for tubes: MACSmix™ Tube Rotator (# 130-090-753).
- (Optional) Pre-Separation Filters (30  $\mu$ m) (# 130-041-407) to remove cell clumps.

## 2. Protocol overview



## 3. Experimental set-up

### 3.1 Controls

#### Negative control

For accurate detection of IL-22-secreting cells, a negative control sample should always be included. This will provide information about IL-22 secretion unrelated to the specific antigen-stimulation, but, for example, due to ongoing *in vivo* immune responses. The control sample should be treated exactly the same as the antigen-stimulated sample except for the addition of antigen, or by using a control antigen.

#### Positive control

When setting up a new experiment, it is recommended to include a positive control. As a positive control, a sample stimulated with phorbol myristate acetate (PMA) (20 ng/mL) and ionomycin (1 µg/mL) for 4 hours, may be included in the experiment.

### 3.2 Kinetics of restimulation and proposed time schedule

#### Peptides

Upon stimulation with peptide, the cells can be analyzed for IL-22 secretion 3–6 hours later.

It is possible to prepare the cells first and take them into culture overnight, but without adding the antigen (see 4.2 step 2.). Peptide is then added the next morning for 3 hours of stimulation, directly followed by the IL-22 Secretion Assay.

#### Proteins

Upon stimulation with protein antigen preparations, for example, from *C. albicans*, the cells can be analyzed for IL-22 secretion 6–16 hours later. It is possible to start the stimulation of the cells late in the afternoon, and to perform the IL-22 Secretion Assay the following morning.

#### Costimulation

The addition of costimulatory agents like CD28 or CD49d antibody may enhance the response to the antigen. If costimulatory agents are added to the antigen sample, they also have to be included in the control sample.

### 3.3 Counterstaining of cytokine-secreting cells

The IL-22-secreting cells are stained with biotin-conjugated IL-22 Detection Antibodies and Anti-Biotin-PE. To identify cells of interest, counterstaining for T cells with, for example, CD4-FITC and CD154-APC is important.

▲ Upon activation of T cells, TCR and some associated molecules, like CD3, might be down-regulated.

▲ The samples should be stained with propidium iodide (PI) or 7-AAD prior to acquisition, to exclude dead cells from analysis. This will reduce non-specific background staining and increase sensitivity.

▲ For optimal sensitivity, we recommend labeling of undesired non-T cells, such as monocytes and B cells with appropriate fluorochrome-conjugated antibodies, e.g., CD14-PerCP-Vio<sup>®</sup> 700 and CD20-PerCP. These cells together with PI stained dead cells can then

be excluded by gating.

### 3.4 Two-color cytokine analysis

IL-22-secreting cells can be analyzed simultaneously for IFN-γ, IL-2, IL-5, IL-10, IL-17, or TNF-α production by two-color cytokine analysis combining the IL-22 Secretion Assay – Detection Kit (PE) with, e.g., the IL-2 Secretion Assay – Detection Kit (APC) (# 130-090-763) or the IFN-γ Secretion Assay – Detection Kit (FITC) (# 130-090-433). Detailed protocols are included in the data sheets of the Cytokine Secretion Assay – Detection Kits (APC) or (FITC) and are available at [www.miltenyibiotec.com](http://www.miltenyibiotec.com).

### 3.5 Combination with peptide-MHC tetramer staining

IL-22-secreting cells can be analyzed simultaneously for peptide-MHC tetramers combining the IL-22 Secretion Assay – Detection Kit (PE) with APC-conjugated peptide-MHC tetramers. The special protocol “Combined staining of cytokine-secreting cells with peptide-MHC tetramers” is available at [www.miltenyibiotec.com/protocols](http://www.miltenyibiotec.com/protocols).

### 3.6 Detection with very low frequencies

(Optional, reagents not included) If the sample contains less than 0.01–0.1% of IL-22-secreting cells, it is possible to enrich these cells magnetically using the IL-22 Secretion Assay – Cell Enrichment and Detection Kit (PE) (# 130-108-274). Thereby it is possible to

detect antigen-specific T cells down to frequencies as low as 0.0001% (1 in  $10^6$ ).

## 4. Protocol for the IL-22 Secretion Assay

### 4.1 Cell preparation

To detect and isolate cytokine-secreting cells, best results are achieved by starting the assay with fresh PBMCs, or with other leukocyte containing single-cell preparations from tissues or cell lines. Alternatively, frozen cell preparations can be used.

▲ **Note:** PBMCs may be stored overnight. The cells should be resuspended and incubated in culture medium as described in 4.2 step 2. However, the stimulus should not be added to the culture until the next day.

▲ **Note:** Remove platelets after density gradient separation. Resuspend cell pellet, fill tube with buffer, and mix. Centrifuge at 200×g for 10–15 minutes at 20 °C. Carefully remove supernatant.

**Special protocols for whole blood:** You can start the IL-22 Secretion Assay directly from whole blood. For details on the procedure refer to [www.miltenyibiotec.com](http://www.miltenyibiotec.com).

### 4.2 In vitro stimulation

▲ Always include a **negative control** in the experiment. A **positive control** may also be included (refer to 3.1)

▲ Do **not** use media containing any **non-human** proteins, such as BSA

or FCS, as they lead to non-specific stimulation.

### Protocol for *in vitro* stimulation

1. Wash cells by adding medium, centrifuge at 300×g for 10 minutes.
2. Resuspend cells in culture medium, containing 5% human serum, adjust to  $10^7$  cells/mL and  $5 \times 10^6$  cells/cm<sup>2</sup> (refer to 6. Appendix: Flask and dish sizes for *in vitro* stimulation).

3. Add antigen or control reagent:

PMA/ionomycin: 2–4 hours at 37 °C, 5–7% CO<sub>2</sub>, e.g., 20 ng/mL/  
1 µg/mL

Peptide: 3–6 hours at 37 °C, 5–7% CO<sub>2</sub>, e.g., 1–10 µg/mL

Protein preparation: 6–16 hours at 37 °C, 5–7% CO<sub>2</sub>, e.g., 20 µg/mL

For comparison of different experiments, the stimulation time should always be the same (refer to 3.2).

▲ **Note:** If CD154 antibodies are used in the labeling step of the cytokine secretion assay to stain activated CD4<sup>+</sup> T cells, a CD40-blocking antibody has to be added during the *in vitro* stimulation step to prevent CD154 down-regulation.

4. Collect cells carefully by using a cell scraper or by pipetting up and down when working with smaller volumes. Rinse the dish with cold buffer. Check microscopically for any remaining cells, if necessary, rinse the dish again.

## 4.3 Cytokine Secretion Assay

### General considerations

▲ The assay is optimized for cell samples containing <5% of total IL-22-secreting cells. If ≥5% of IL-22-secreting cells are expected, it is necessary to dilute the cells further during the cytokine secretion period, and therefore a larger test tube will be needed (refer to table below). The dilution prevents non-specific staining of cells not secreting IL-22 during this period.

▲ For each test with  $10^6$  total cells, prepare:

50 mL of **cold buffer** (2–8 °C)

100 µL of **cold medium** (2–8 °C)

1 mL (or 10 mL; refer to table next page) of **warm medium** (37 °C).

▲ Work fast, keep cells cold, and use pre-cooled solutions. This will prevent capping of antibodies on the cell surface and non-specific cell labeling (exception: warm medium during secretion period).

▲ Volumes given below are for up to  $10^6$  total cells. When working with fewer than  $10^6$  cells, use the same volumes as indicated. When working with higher cell numbers, scale up all reagent volumes and total volumes accordingly (e.g. for  $2 \times 10^6$  total cells, use twice the volume of all indicated reagent volumes and total volumes).

▲ Do not remove supernatant by decanting. This will lead to cell loss and incorrect incubation volumes. Aspirate supernatant.

▲ Dead cells may bind non-specifically to antibodies. Therefore, when working with cell preparations containing large amounts of dead cells, they should be removed before starting the IL-22 Secretion Assay, for example, by density gradient centrifugation or by using the Dead Cell Removal Kit (# 130-090-101).

### Labeling cells with IL-22 Catch Reagent

1. Use  $10^6$  total cells in a 2 mL closable tube per sample.
2. Wash cells by adding 1–2 mL of **cold buffer**, centrifuge at 300×g for 10 minutes at 2–8 °C, aspirate supernatant completely.
3. Resuspend cell pellet in 90 µL of **cold medium** per  $10^6$  total cells.
4. Add 10 µL of IL-22 Catch Reagent per  $10^6$  total cells, mix well and incubate for 5 minutes **on ice**.

### IL-22 secretion period

1. Add **warm** (37 °C) medium to dilute the cells according to the following table:

Expected number of IL-22-secreting cells	Dilution	Amount of medium to add per $10^6$ total cells
<5%	$10^6$ cells/mL	1 mL
≥5%	$\leq 10^5$ cells/mL	10 mL

▲ **Note:** For frequencies of cytokine-secreting cells >20% the cells need to be further diluted, e.g., by a factor of 5.

2. Incubate cells in closed tube for 45 minutes at 37 °C under

slow continuous rotation using the MACSmix™ Tube Rotator (# 130-090-753), or turn tube every 5 minutes to resuspend settled cells.

▲ **Note:** During this step it is crucial to prevent contact of cells to avoid cross contamination with cytokines.

1. Put the tube **on ice**.
2. Wash the cells by filling up the tube with **cold buffer** and centrifuge at 300×g for 10 minutes at 2–8 °C. Aspirate supernatant completely.  
▲ **Note:** If the volume of the cell suspension was higher than the volume of the added buffer, then repeat the wash step.
3. Resuspend cell pellet in 90 µL of **cold buffer** per 10<sup>6</sup> total cells.
4. Add 10 µL of **IL-22 Detection Antibody (Biotin)** per 10<sup>6</sup> total cells.
5. (Optional) Add staining antibodies, e.g., CD4-FITC and CD154-APC according to manufacturer's recommendation.
6. Mix well and incubate for 10 minutes on ice.
7. Add 1 mL of **cold buffer** and centrifuge at 300×g for 10 minutes at 2–8 °C. Aspirate supernatant completely.
8. Resuspend cell pellet in 98 µL of cold buffer per 10<sup>7</sup> total cells.
9. Add 2 µL of **Anti-Biotin-PE** and incubate for 10 minutes on ice.
10. Add 1 mL of **cold buffer** and centrifuge at 300×g for 10 minutes at

2–8° C. Aspirate supernatant.

11. Proceed to analysis (5).

### 5. Detection and analysis of IL-22-secreting T cells

▲ Add propidium iodide (PI) or 7-AAD to a final concentration of 0.5 µg/mL just prior to acquisition to exclude dead cells from flow cytometric analysis. Incubating with PI for longer periods will affect the viability of the cells.

Do not fix the cells when using PI or 7-AAD.

▲ For optimized sensitivity, an appropriate number of viable cells has to be acquired from the antigen stimulated sample as well as from the control sample.

▲ **Note:** Acquire 2×10<sup>5</sup> viable cells from each sample.

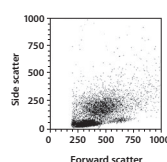
To illustrate the analysis, we describe the detection of IL-22-secreting T cells using the IL-22 Secretion Assay. The detailed description, including how to set gates, should serve as a model for the analysis of your own sample.

1. 10<sup>7</sup> human PBMCs have been stimulated for 4 hours with and without PMA (20 ng/mL) and ionomycin (1 µg/mL).
2. The IL-22 Secretion Assay was performed on the stimulated and unstimulated sample.
3. Counterstaining of T cells was performed using CD4-FITC and

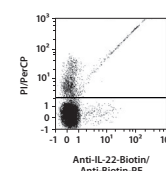
CD154-APC.

4. Monocytes and B cells were stained with CD14-PerCP and CD20-PerCP.
5. Dead cells were stained with PI, which was added just prior to flow cytometric analysis to a final concentration of 0.5 µg/mL.
6. 250,000 viable cells were acquired by flow cytometry using the MACSQuant® Analyzer, from the stimulated as well as from the unstimulated samples.
7. A lymphocyte gate based on forward scatter (FSC) and side scatter (SSC) properties was activated prior to further gating to exclude monocytes and debris (A).
8. Dead cells, monocytes, and B cells were excluded according to PI-, CD14-PerCP-, and CD20-PerCP-staining in a fluorescence 2 (PE) versus fluorescence 3 (PI/PerCP) plot (B).  
▲ **Note:** The dead cell exclusion is crucial for the analysis of rare antigen-specific T cells, as dead cells may bind non-specifically to MicroBeads or antibodies. This could lead to false positive events.  
▲ **Note:** The sensitivity of detection is further enhanced by exclusion of undesired non-T cells, like monocytes which may cause non-specific background staining.
9. Analysis of secreted IL-22 (PE) versus CD154-APC of viable CD4<sup>+</sup> T cells (gated on CD4-FITC) with and without stimulation via PMA/ionomycin (C) is displayed.

#### A) Lymphocyte gate

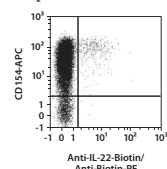


#### B) B cell, monocyte, and dead cell exclusion



#### C) IL-22-secreting CD4<sup>+</sup> T cells

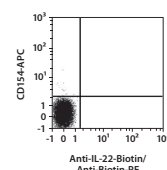
##### Sample stimulated with PMA/ionomycin



1.69% of the total CD4<sup>+</sup> T cell population secrete IL-22 (see formula below).

$$\% \text{ IL-22}^+ \text{ cells among CD4}^+ = \frac{\# \text{ of IL-22}^+ \text{ CD4}^+ \text{ T cells in the analyzed sample}}{\# \text{ of total CD4}^+ \text{ T cells in the analyzed sample}} \times 100$$

##### Unstimulated control sample



0.01% of the total CD4<sup>+</sup> T cell population secrete IL-22.

## 6. Appendix: Flask and dish sizes for *in vitro* stimulation

For *in vitro* stimulation (refer to 4.2) the cells should be resuspended in culture medium, containing 5% of human serum, at a dilution of  $10^7$  cells/mL. The cells should be plated at a density of  $5 \times 10^4$  cells/cm<sup>2</sup>. Both the dilution and the cell density are important to assure optimum stimulation.

The following table lists culture plate, dish and flask sizes suitable for different cell numbers. It also indicates the appropriate amount of medium to add.

Total cell number	Medium volume to add	Culture plate	Well diameter
$0.15 \times 10^7$	0.15 mL	96 well	0.64 cm
$0.50 \times 10^7$	0.50 mL	48 well	1.13 cm
$1.00 \times 10^7$	1.00 mL	24 well	1.60 cm
$2.00 \times 10^7$	2.00 mL	12 well	2.26 cm
$5.00 \times 10^7$	5.00 mL	6 well	3.50 cm
Total cell number	Medium volume to add	Culture dish	Dish diameter
$4.5 \times 10^7$	4.5 mL	small	3.5 cm
$10.0 \times 10^7$	10.0 mL	medium	6 cm
$25.0 \times 10^7$	25.0 mL	large	10 cm
$50.0 \times 10^7$	50.0 mL	extra large	15 cm
Total cell number	Medium volume to add	Culture flask	Growth area
$12 \times 10^7$	12 mL	50 mL	25 cm <sup>2</sup>
$40 \times 10^7$	40 mL	250 mL	75 cm <sup>2</sup>
$80 \times 10^7$	80 mL	720 mL	162 cm <sup>2</sup>

$120 \times 10^7$	120 mL	900 mL	225 cm <sup>2</sup>
-------------------	--------	--------	---------------------

Refer to [www.miltenyibiotec.com](http://www.miltenyibiotec.com) for all data sheets and protocols. Miltenyi Biotec provides technical support worldwide. Visit [www.miltenyibiotec.com](http://www.miltenyibiotec.com) for local Miltenyi Biotec Technical Support contact information.

### Warnings

Reagents contain sodium azide. Under acidic conditions sodium azide yields hydrazoic acid, which is extremely toxic. Azide compounds should be diluted with running water before discarding. These precautions are recommended to avoid deposits in plumbing where explosive conditions may develop.

## Legal notices

### Limited product warranty

Miltenyi Biotec B.V. & Co. KG and/or its affiliate(s) warrant this product to be free from material defects in workmanship and materials and to conform substantially with Miltenyi Biotec's published specifications for the product at the time of order, under normal use and conditions in accordance with its applicable documentation, for a period beginning on the date of delivery of the product by Miltenyi Biotec or its authorized distributor and ending on the expiration date of the product's applicable shelf life stated on the product label, packaging or documentation (as applicable) or, in the absence thereof, ONE (1) YEAR from date of delivery ("Product Warranty"). Miltenyi Biotec's Product Warranty is provided subject to the warranty terms as set forth in Miltenyi Biotec's General Terms and Conditions for the Sale of Products and Services available on Miltenyi Biotec's website at [www.miltenyibiotec.com](http://www.miltenyibiotec.com), as in effect at the time of order ("Product Warranty"). Additional terms may apply. BY USE OF THIS PRODUCT, THE CUSTOMER AGREES TO BE BOUND BY THESE TERMS.

THE CUSTOMER IS SOLELY RESPONSIBLE FOR DETERMINING IF A PRODUCT IS SUITABLE FOR CUSTOMER'S PARTICULAR PURPOSE AND APPLICATION METHODS.

### Technical information

The technical information, data, protocols, and other statements provided by Miltenyi Biotec in this document are based on information, tests, or experience which Miltenyi Biotec believes to be reliable, but the accuracy or completeness of such information is not guaranteed. Such technical information and data are intended for persons with knowledge and technical skills sufficient to assess and apply their own informed judgment to the information. Miltenyi Biotec shall not be liable for any technical or editorial errors or omissions contained herein.

All information and specifications are subject to change without prior notice. Please contact Miltenyi Biotec Technical Support or visit [www.miltenyibiotec.com](http://www.miltenyibiotec.com) for the most up-to-date information on Miltenyi Biotec products.

### Licenses

This product and/or its use may be covered by one or more pending or issued patents and/or may have certain limitations. Certain uses may be excluded by separate terms and conditions. Please contact your local Miltenyi Biotec representative or visit Miltenyi Biotec's website at [www.miltenyibiotec.com](http://www.miltenyibiotec.com) for more information.

The purchase of this product conveys to the customer the non-transferable right to use the purchased amount of the product in research conducted by the customer (whether the customer is an academic or for-profit entity). This product may not be further sold. Additional terms and conditions (including the terms of a Limited Use Label License) may apply.

CUSTOMER'S USE OF THIS PRODUCT MAY REQUIRE ADDITIONAL LICENSES DEPENDING ON THE SPECIFIC APPLICATION. THE CUSTOMER IS SOLELY RESPONSIBLE FOR DETERMINING FOR ITSELF WHETHER IT HAS ALL APPROPRIATE LICENSES IN PLACE. Miltenyi Biotec provides no warranty that customer's use of this product does not and will not infringe intellectual property rights owned by a third party. BY USE OF THIS PRODUCT, THE CUSTOMER AGREES TO BE BOUND BY THESE TERMS.

### Trademarks

autoMACS, MACS, MACSmix, MACSQuant, the Miltenyi Biotec logo, PepTivator, and Vio are registered trademarks or trademarks of Miltenyi Biotec and/or its affiliates in various countries worldwide. All other trademarks mentioned in this publication are the property of their respective owners and are used for identification purposes only.

Copyright © 2021 Miltenyi Biotec and/or its affiliates. All rights reserved.