



Miltenyi Biotec

StainExpress™ Dry Antibody Cocktails

Standardize your flow cytometry



JOIN THE
FLOW
REVOLUTION

What matters is what's inside

StainExpress Dry Antibody Cocktails are preformulated multicolor panels dried onto the bottom of standard flow cytometry tubes. Discover the unique benefits of our dried reagents.

Pretested panels

StainExpress Panels have been designed and optimized by our R&D experts for optimal staining results. If flexibility is needed, additional markers can be added into free or dump channels.

Fast and simple

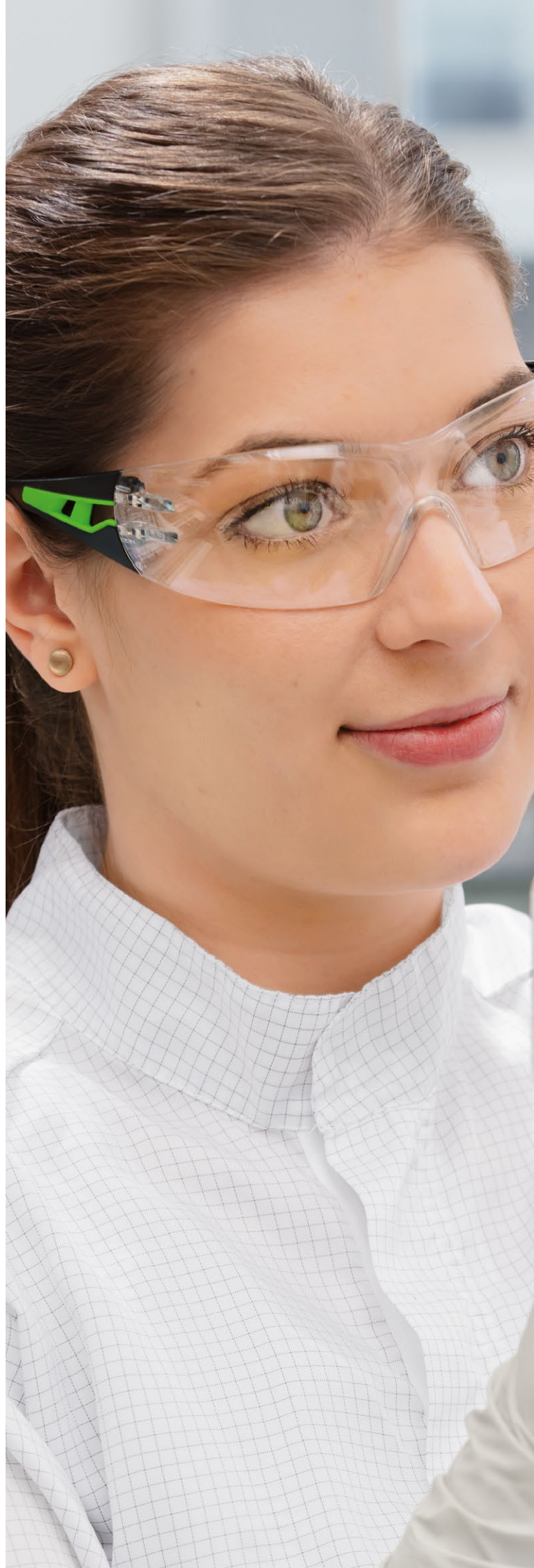
In traditional workflows, a lot of operator hands-on time is consumed by antibody titration, preparation, and quality control of liquid cocktails. StainExpress Dry Antibody Cocktails replace these manual handling steps, which not only consume valuable time but constitute a potential source of errors.

Standardized

The dry, temperature-stable format ensures consistent results over time. To further enhance reproducibility, StainExpress Kits are made of our unique REAfinity™ Recombinant Antibodies, providing high lot-to-lot consistency and minimizing non-specific background signal.

Easy stock management

The stable format allows storage at room temperature without the need for refrigeration space. Additionally, StainExpress Dry Antibody Cocktail stock management is facilitated compared to a multitude of liquid single antibodies, and you can work with the same lot over prolonged periods, saving time for cocktail revalidation and reducing waste.





StainExpress Dry Antibody Cocktails

Designed to increase assay simplicity and consistency

The StainExpress Workflow: fast, easy, and error-free

Flow cytometry assays can be complex and demand a lot of operator hands-on time, comprising panel design and optimization, labeling tubes, and compiling multiple single antibodies into liquid cocktails. Simply adding the sample into the ready-made StainExpress Tube replaces time-consuming and error-prone steps of routine assays.

In particular, assays performed around cell and gene therapies benefit from dry antibody cocktails that ensure consistent results over time, support multicenter comparability of results, and freeup staff capacities.

REAfinity Recombinant Antibodies – the underlying technology

REAfinity Antibodies are recombinant antibodies that provide superior lot-to-lot consistency and purity compared to mouse or rat hybridoma-derived antibodies. They have been recombinantly engineered to produce highly specific antibodies, eliminating background signal without requiring FcR blocking. Additionally, they all have the same IgG1 isotype, reducing complexity of experiment planning.

To create the best possible results, StainExpress Dry Antibody Cocktails are solely comprised of REAfinity Recombinant Antibodies.



LEARN MORE



Learn more about REAfinity Recombinant Antibodies for flow cytometry.

► milttenyibiotec.com/REAfinity

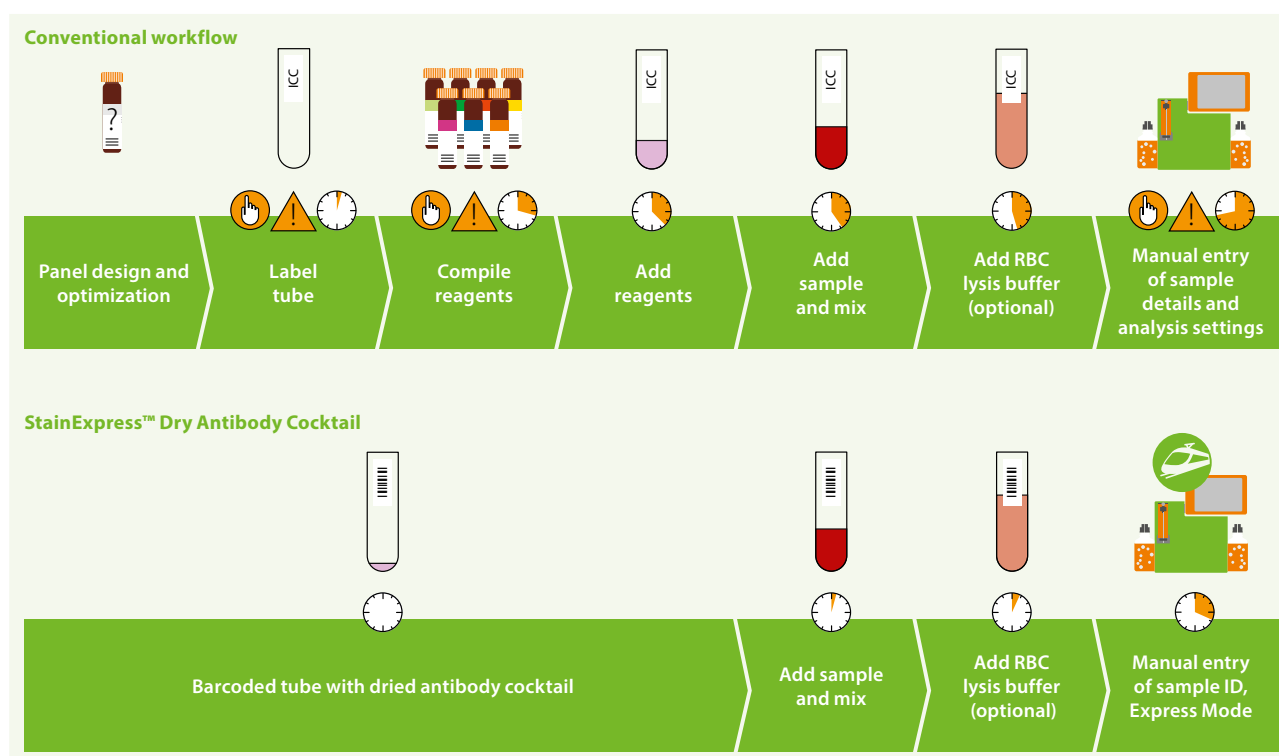


Figure 1: Comparison of the conventional workflow and StainExpress Dry Antibody Cocktails.

Optimal staining results

Leverage the extensive testing and optimization by our R&D experts. See for yourself how the StainExpress Immune Cell Composition Cocktail enables you to reliably distinguish leukocyte subsets in human blood and other samples. It can be used in a variety of applications, e.g., determination of cell counts and population subsets during CAR T cell manufacturing procedures.

Flexible CAR detection

The StainExpress CAR T Transduction Cocktail is the ideal tool to evaluate transduction efficiency during CAR T cell manufacturing. This unified backbone panel has a free PE channel to flexibly add a CAR Detection Reagent of choice.

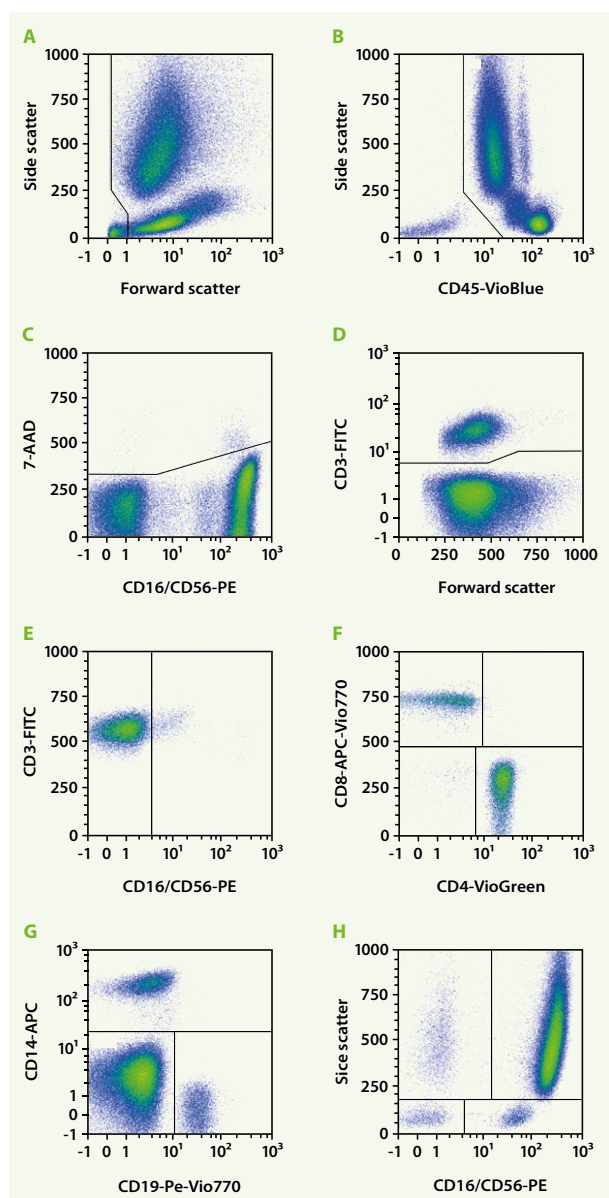


Figure 2: Whole blood from a healthy donor was stained with the StainExpress Immune Cell Composition Cocktail and analyzed by flow cytometry using the MACSQuant[®] Analyzer 10.



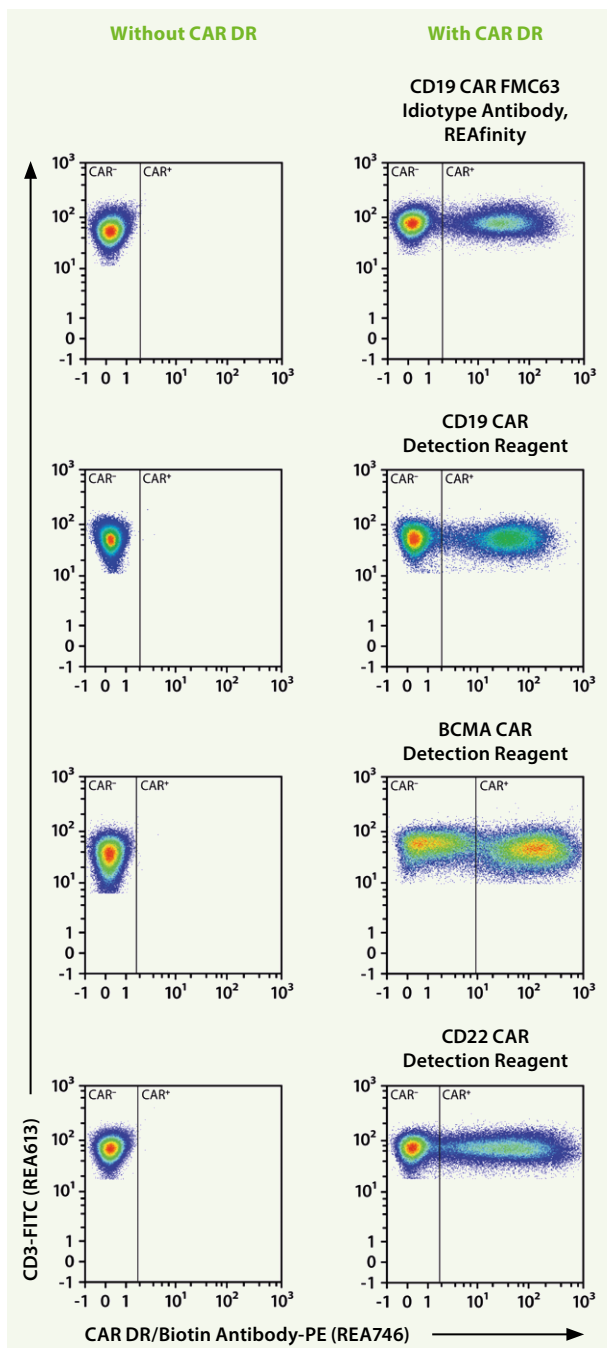


Figure 3: StainExpress CAR T Transduction Cocktail is optimized for usage with Miltenyi Biotec's CAR Detection Reagents detectable in the PE-channel.

Fully automated data acquisition and analysis with Express Modes

When using a MACSQuant Analyzer 10 or 16, StainExpress Kits can be integrated into a fully automated workflow solution utilizing the CAR T Cell Express Mode package. Express Modes are unique add-on features for the MACSQuantify™ Software developed to simplify flow cytometric analyses via predefined experiment settings, acquisition, and automated analysis. Gating parameters are automatically adjusted for each data file to achieve optimal results.



LEARN MORE



Explore the CAR T Cell Express Mode Package.

► miltenyibiotec.com/ExpressModes

LEARN MORE



Choose from our CAR Detection Reagents.

► miltenyibiotec.com/CARDetection

Product Overview

Cocktail	Markers	Order no.
StainExpress Immune Cell Composition Cocktail, human	CD45, CD3, CD4, CD8, CD19, CD16, CD56, CD14, 7-AAD	130-127-637
StainExpress CAR T Transduction Cocktail, human	CD45, CD3, CD4, CD8, CD14, 7-AAD*	130-127-638

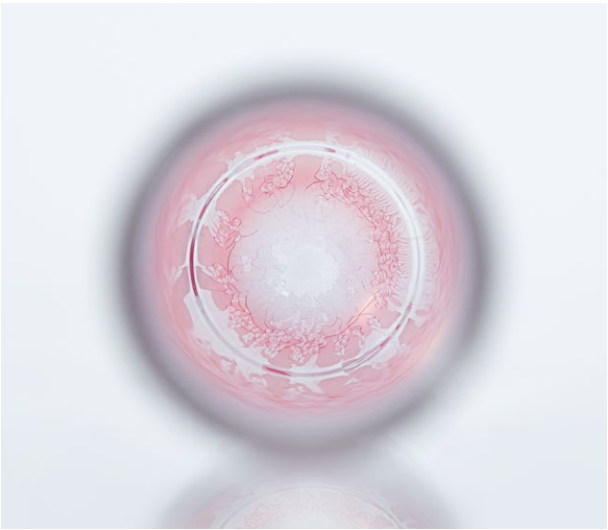
*This unified backbone panel includes a free PE channel to flexibly add the CAR Detection Reagent of choice

LEARN MORE



Our portfolio is constantly growing, check the latest product listing.

► miltenyibiotec.com/StainExpress





Germany/Austria

Miltenyi Biotec B.V. & Co. KG
Friedrich-Ebert-Straße 68
51429 Bergisch Gladbach
Germany
Phone +49 2204 8306-0
Fax +49 2204 85197
macsde@miltenyi.com

USA/Canada

Miltenyi Biotec, Inc.
2303 Lindbergh Street
Auburn, CA 95602, USA
Phone 800 FOR MACS
Phone +1 866 811 4466
Fax +1 877 591 1060
macsus@miltenyi.com

Australia

Miltenyi Biotec
Australia Pty. Ltd.
Unit 11, 2 Eden Park Drive
Macquarie Park, NSW 2113
Australia
Phone +61 2 8877 7400
Fax +61 2 9889 5044
macsau@miltenyi.com

Benelux

Miltenyi Biotec B.V.
Sandifortdreef 17
2333 ZZ Leiden
The Netherlands
macsnl@miltenyi.com

Customer service

The Netherlands
Phone 0800 4020120
Fax 0800 4020100

Customer service Belgium

Phone 0800 94016
Fax 0800 99626

Customer service Luxembourg

Phone 800 24971
Fax 800 24984

China

Miltenyi Biotec Technology &
Trading (Shanghai) Co., Ltd.
Room A401, 4/F
No. 1077, Zhangheng Road
Pudong New Area
201203 Shanghai, P.R. China
Phone +86 21 6235 1005-0
Fax +86 21 6235 0953
macscn@miltenyi.com.cn

France

Miltenyi Biotec SAS
10 rue Mercœur
75011 Paris, France
Phone +33 1 56 98 16 16
macsfr@miltenyi.com

Hong Kong

Miltenyi Biotec Hong Kong Ltd.
Unit 301, Lakeside 1
No. 8 Science Park West Avenue
Hong Kong Science Park
Pak Shek Kok, New Territories
Hong Kong
Phone +852 3751 6698
Fax +852 3619 5772
macshk@miltenyi.com.hk

Italy

Miltenyi Biotec S.r.l.
Via Paolo Nanni Costa, 30
40133 Bologna
Italy
Phone +39 051 6 460 411
Fax +39 051 6 460 499
macsit@miltenyi.com

Japan

Miltenyi Biotec K.K.
NEX-Eitai Building 5F
16-10 Fuyuki, Koto-ku
Tokyo 135-0041, Japan
Phone +81 3 5646 8910
Fax +81 3 5646 8911
macsjp@miltenyi.com

Nordics and Baltics

Miltenyi Biotec Norden AB
Medicon Village
Scheeletorget 1
223 81 Lund
Sweden
macsse@miltenyi.com

Customer service Sweden

Phone 0200 111 800
Fax +46 280 72 99

Customer service Denmark

Phone 80 20 30 10
Fax +46 46 280 72 99

Customer service

**Norway, Finland, Iceland,
and Baltic countries**
Phone +46 46 280 72 80
Fax +46 46 280 72 99

Singapore

Miltenyi Biotec Asia Pacific Pte Ltd.
438B Alexandra Road, Block B
Alexandra Technopark
#06-01
Singapore 119968
Phone +65 6238 8183
Fax +65 6238 0302
macssg@miltenyi.com

South Korea

Miltenyi Biotec Korea Co., Ltd.
Arigi Bldg. 8F
562 Nonhyeon-ro
Gangnam-gu
Seoul 06136, South Korea
Phone +82 2 555 1988
Fax +82 2 555 8890
macskr@miltenyi.com

Spain

Miltenyi Biotec S.L.
C/Luis Buñuel 2
Ciudad de la Imagen
28223 Pozuelo de Alarcón (Madrid)
Spain
Phone +34 91 512 12 90
Fax +34 91 512 12 91
macses@miltenyi.com

Switzerland

Miltenyi Biotec Swiss AG
Gibelinstrasse 27
4500 Solothurn
Switzerland
Phone +41 32 623 08 47
Fax +49 2204 85197
macsch@miltenyi.com

United Kingdom

Miltenyi Biotec Ltd.
Almac House, Church Lane
Bisley, Surrey GU24 9DR, UK
Phone +44 1483 799 800
Fax +44 1483 799 811
macsuk@miltenyi.com

www.miltenyibiotec.com

Miltenyi Biotec provides products and services worldwide. Visit www.miltenyibiotec.com/local to find your nearest Miltenyi Biotec contact.

Unless otherwise specifically indicated, Miltenyi Biotec products and services are for research use only and not for therapeutic or diagnostic use. MACSQuant, MACSQuantify, REAfinity, StainExpress, MACS, and the Miltenyi Biotec logo are registered trademarks or trademarks of Miltenyi Biotec and/or its affiliates in various countries worldwide. Copyright © 2022 Miltenyi Biotec and/or its affiliates. All rights reserved.