

Contents

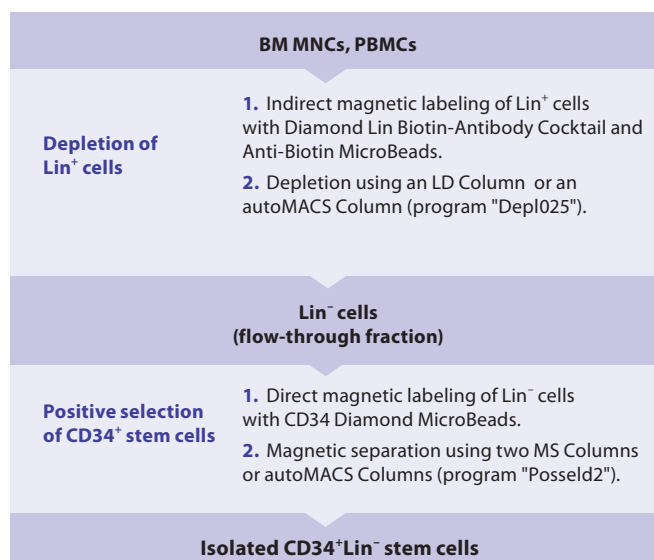
1. Description
 - 1.1 Principle of the MACS® Separation
 - 1.2 Background information
 - 1.3 Applications
 - 1.4 Reagent and instrument requirements
2. Protocol
 - 2.1 Sample preparation
 - 2.2 Magnetic labeling of Lin⁺ cells
 - 2.3 Magnetic separation: Depletion of Lin⁺ cells
 - 2.4 Magnetic labeling of CD34⁺ stem cells
 - 2.5 Magnetic separation: Positive selection of CD34⁺ stem cells
3. Example of a separation using the Diamond CD34 Isolation Kit

1. Description

| | |
|-----------------------|--|
| Components | <p>2 mL Diamond Lin Biotin-Antibody Cocktail, human: Cocktail of biotin-conjugated monoclonal anti-human antibodies against CD2, CD3, CD11b, CD14, CD15, CD16, CD19, CD56, CD61, and CD235a (Glycophorin A).</p> <p>2×2 mL Anti-Biotin MicroBeads: MicroBeads conjugated to monoclonal anti-biotin antibody (isotype: mouse IgG1)</p> <p>2 mL CD34 Diamond MicroBeads, human: MicroBeads conjugated to monoclonal CD34 antibodies (isotype: mouse IgG1)</p> |
| Capacity | For 2×10 ⁹ total cells, up to 40 separations. |
| Product format | All components are supplied in buffer containing stabilizer and 0.05% sodium azide. |
| Storage | Store protected from light at 2–8 °C. Do not freeze. The expiration date is indicated on the vial label. |

1.1 Principle of the MACS® Separation

The Diamond CD34 Isolation Kit, human has been developed for the isolation of extremely pure CD34⁺ stem cells from peripheral blood mononuclear cells (PBMCs) and bone marrow mononuclear cells (BM MNCs). The expected purity is almost 100%. Isolation of stem cells is performed in a two-step procedure. First, Lin⁺ cells are indirectly magnetically labeled with a cocktail of biotin-conjugated antibodies against lineage-specific antigens and Anti-Biotin MicroBeads. Upon subsequent magnetic separation of the cells over a MACS® Column that is placed in a magnetic field of a MACS Separator, the magnetically labeled Lin⁺ cells are retained within the column while the unlabeled Lin⁻ cells pass through. In the second step, the enriched stem cell fraction is directly labeled with CD34 Diamond MicroBeads. Upon subsequent magnetic separation, the CD34⁺ stem cells are eluted after removal of the column from the magnetic field. To achieve highest purities, the positively selected cell fraction containing the stem cells is separated over a second column.



1.2 Background information

The CD34 antigen is a single-chain transmembrane glycoprotein expressed on human hematopoietic stem and progenitor cells, endothelial progenitor cells but also on some lineage-positive cells. The Diamond CD34 Isolation Kit, human combines lineage depletion and a CD34 enrichment to obtain pure Lin⁻CD34⁺ stem cells, for example, for expression profiling. Using the Diamond CD34 Isolation Kit, human primitive CD34 cells can be isolated from BM MNCs or PBMCs even if the starting frequency is low.

1.3 Applications

- Isolation of highly pure Lin⁻CD34⁺ stem cells, e. g., for expression profiling especially when using the autoMACS Pro Separator.
- Characterization of undifferentiated stem cells and their developmental potential.
- Studies on stimulation of proliferation and maturation by cytokines

1.4 Reagent and instrument requirements

- Buffer: Prepare a solution containing phosphate-buffered saline (PBS), pH 7.2, 0.5% bovine serum albumin (BSA), and 2 mM EDTA by diluting MACS BSA Stock Solution (# 130-091-376) 1:20 with autoMACS® Rinsing Solution (# 130-091-222). Keep buffer cold (2–8 °C). Degas buffer before use, as air bubbles could block the column.

▲ **Note:** EDTA can be replaced by other supplements such as anticoagulant citrate dextrose formula-A (ACD-A) or citrate phosphate dextrose (CPD). BSA can be replaced by other proteins such as human serum albumin, human serum, or fetal bovine serum (FBS). Buffers or media containing Ca²⁺ or Mg²⁺ are not recommended for use.

- MACS Columns and MACS Separators: Depletion of Lin⁺ cells is performed on an LD Column. The subsequent positive selection of CD34⁺ stem cells is performed on two MS Columns. Positive selection or depletion can also be performed by using the autoMACS Pro or the autoMACS Separator.

| Column | Max. number of labeled cells | Max. number of total cells | Separator |
|--|------------------------------|----------------------------|---|
| Depletion | | | |
| LD | 10 ⁸ | 5×10 ⁸ | MidiMACS, QuadroMACS, VarioMACS, SuperMACS II |
| Positive selection | | | |
| MS | 10 ⁷ | 2×10 ⁸ | MiniMACS, OctoMACS, VarioMACS, SuperMACS II |
| Positive selection or depletion | | | |
| autoMACS | 2×10 ⁸ | 4×10 ⁹ | autoMACS Pro, autoMACS |

▲ **Note:** Column adapters are required to insert certain columns into the VarioMACS™ or SuperMACS™ Separators. For details see the respective MACS Separator data sheet.

- (Optional) Fluorochrome-conjugated antibodies for flow cytometric analysis, e.g., CD34-FITC (# 130-081-001), CD34-PE (# 130-081-002), CD34-APC (# 130-090-954), CD45-FITC (# 130-080-202), CD45-PE (# 130-080-201), CD45-APC (# 130-091-230), or Anti-Biotin-PE (# 130-090-756). For more information about fluorochrome-conjugated antibodies see www.miltenyibiotec.com.
- (Optional) MC CD34 Stem Cell Cocktail, human (# 130-093-427) for flow cytometric evaluation of separation results.
- (Optional) Propidium Iodide Solution (# 130-093-233) or 7-AAD for flow cytometric exclusion of dead cells.
- (Optional) Pre-Separation Filters (# 130-041-407) to remove cell clumps.

2. Protocol

2.1 Sample preparation

When working with anticoagulated peripheral blood or buffy coat, peripheral blood mononuclear cells (PBMCs) should be isolated by density gradient centrifugation, for example, using Ficoll-Paque™.

▲ **Note:** To remove platelets after density gradient separation, resuspend cell pellet in buffer and centrifuge at 200×g for 10–15 minutes at 20 °C. Carefully aspirate supernatant. Repeat washing step.

When working with tissues or lysed blood, prepare a single-cell suspension using standard methods.

For details see the protocols section at www.miltenyibiotec.com/protocols.

For preparation of bone marrow from human aspirates, please refer to the sample preparation protocols at www.miltenyibiotec.com/protocols.



2.2 Magnetic labeling of Lin⁺ cells

▲ Work fast, keep cells cold, and use pre-cooled solutions. This will prevent capping of antibodies on the cell surface and non-specific cell labeling.

▲ Volumes for magnetic labeling given below are for up to 5×10⁷ total cells. When working with fewer than 5×10⁷ cells, use the same volumes as indicated. When working with higher cell numbers, scale up all reagent volumes and total volumes accordingly (e.g. for 10⁸ total cells, use twice the volume of all indicated reagent volumes and total volumes).

▲ For optimal performance it is important to obtain a single-cell suspension before magnetic labeling. Pass cells through 30 µm nylon mesh (Pre-Separation Filters, # 130-041-407) to remove cell clumps which may clog the column. Moisten filter with buffer before use.

▲ The recommended incubation temperature is 2–8 °C. Working on ice may require increased incubation times. Higher temperatures and/or longer incubation times may lead to non-specific cell labeling.

1. Determine cell number.
2. Centrifuge cell suspension at 200×g for 10 minutes. Aspirate supernatant completely.
3. Resuspend cell pellet in 200 µL of buffer per 5×10⁷ total cells.
4. Add 50 µL of Diamond Lin Biotin-Antibody Cocktail per 5×10⁷ total cells.
5. Mix well and incubate for 10 minutes in the refrigerator (2–8 °C).
6. Wash cells by adding 2.5–5 mL of buffer per 5×10⁷ cells and centrifuge at 300×g for 10 minutes. Aspirate supernatant completely.
7. Resuspend cell pellet in 400 µL of buffer per 5×10⁷ total cells.
8. Add 100 µL of Anti-Biotin MicroBeads per 5×10⁷ total cells.
9. Mix well and incubate for 15 minutes in the refrigerator (2–8 °C).
10. Wash cells by adding 5–10 mL of buffer per 5×10⁷ cells and centrifuge at 300×g for 10 minutes. Aspirate supernatant completely.

11. Resuspend up to 10^8 cells in 1000 μL of buffer.
 ▲ **Note:** For higher cell numbers, scale up buffer volume accordingly.
12. Proceed to magnetic separation (2.3).



2.3 Magnetic separation: Depletion of Lin^+ cells

▲ Always wait until the column reservoir is empty before proceeding to the next step.

Depletion with LD Columns

1. Place LD Column in the magnetic field of a suitable MACS Separator. For details see LD Column data sheet.
2. Prepare column by rinsing with 2 mL of buffer.
3. Apply cell suspension onto the column.
4. Collect unlabeled cells that pass through and wash column with 2×1 mL of buffer. Collect total effluent; this is the unlabeled Lin^- cell fraction. Perform washing steps by adding buffer two times. Only add new buffer when the column reservoir is empty.
5. Proceed to 2.4 for further enrichment of $\text{CD}34^+$ stem cells.

Depletion with the autoMACS® Pro Separator or the autoMACS® Separator

▲ Refer to the respective user manual for instructions on how to use the autoMACS® Pro Separator or the autoMACS Separator.

▲ Buffers used for operating the autoMACS Pro Separator or the autoMACS Separator should have a temperature of $\geq 10^\circ\text{C}$.

▲ Program choice depends on the isolation strategy, the strength of magnetic labeling, and the frequency of magnetically labeled cells. For details refer to the section describing the cell separation programs in the respective user manual.

Depletion with the autoMACS® Pro Separator

1. Prepare and prime the instrument.
2. Apply tube containing the sample and provide tubes for collecting the labeled and unlabeled cell fractions. Place sample tube in row A of the tube rack and the fraction collection tubes in rows B and C.
3. For a standard separation choose the following program:
 Depletion: "Depl025"
 Collect negative fraction in row B of the tube rack. This fraction represents the unlabeled Lin^- cells.
 (Optional) Collect positive fraction in row C of the tube rack.
4. Proceed to 2.4 for further enrichment of $\text{CD}34^+$ stem cells.

Depletion with the autoMACS® Separator

1. Prepare and prime the instrument.
2. Apply tube containing the sample and provide tubes for collecting the labeled and unlabeled cell fractions. Place sample tube at the uptake port and the fraction collection tubes at port neg1 and port pos1.

3. For a standard separation choose the following program:
 Depletion: "Depl025"
 Collect negative fraction from outlet port neg1. This fraction represents the unlabeled Lin^- cells.
 (Optional) Collect positive fraction from outlet port pos1.
4. Proceed to 2.4 for further enrichment of $\text{CD}34^+$ stem cells.



2.4 Magnetic labeling of $\text{CD}34^+$ stem cells

▲ Volumes for magnetic labeling given below are for an initial starting cell number of up to 5×10^7 cells. For larger initial cell numbers, scale up volumes accordingly.

1. Centrifuge cell suspension at $300 \times g$ for 10 minutes. Aspirate supernatant completely.
2. Resuspend cell pellet in 200 μL of buffer per 5×10^7 total cells.
3. Add 50 μL of $\text{CD}34$ Diamond MicroBeads per 5×10^7 total cells.
4. Mix well and incubate for 30 minutes in the refrigerator ($2-8^\circ\text{C}$).
5. (Optional) Add staining antibodies, e.g., 25 μL of $\text{CD}34\text{-FITC}$ (# 130-081-001) and $\text{CD}45\text{-APC}$ (# 130-091-230), and incubate for 10 minutes in the dark in the refrigerator ($2-8^\circ\text{C}$).
6. Wash cells by adding 2.5–5 mL of buffer per 5×10^7 cells and centrifuge at $300 \times g$ for 10 minutes. Aspirate supernatant completely.
7. Resuspend cell pellet in 500 μL of buffer per 10^8 total cells.



2.5 Magnetic separation: Positive selection of $\text{CD}34^+$ stem cells

Positive selection with MS Columns

▲ To achieve highest purities, perform two consecutive column runs.

1. Place MS Column in the magnetic field of a suitable MACS Separator. For details see the MS Column data sheet.
2. Prepare column by rinsing with 500 μL of buffer.
3. Apply cell suspension onto the column. Collect flow-through containing unlabeled cells.
4. Wash column with 3×500 μL of buffer. Collect unlabeled cells that pass through and combine with the effluent from step 3.
 ▲ **Note:** Perform washing steps by adding buffer aliquots only when the column reservoir is empty.
5. Remove column from the separator and place it on a suitable collection tube.
 ▲ **Note:** To perform a second column run, you may elute the cells directly from the first onto the second, equilibrated column instead of a collection tube.
6. Pipette 1 mL of buffer onto the column. Immediately flush out the magnetically labeled cells by firmly pushing the plunger into the column.
7. Enrich the eluted fraction over a second MS Column. Repeat the magnetic separation procedure as described in steps 1 to 6 by using a new column.

Positive selection with the autoMACS® Pro Separator or the autoMACS® Separator

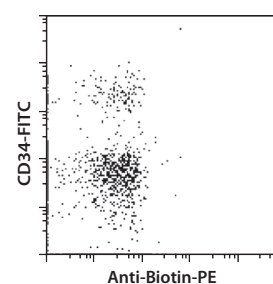
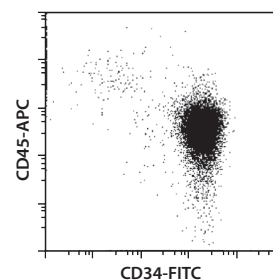
- ▲ Refer to the respective user manual for instructions on how to use the autoMACS® Pro Separator or the autoMACS Separator.
- ▲ Buffers used for operating the autoMACS Pro Separator or the autoMACS Separator should have a temperature of $\geq 10^{\circ}\text{C}$.
- ▲ Program choice depends on the isolation strategy, the strength of magnetic labeling, and the frequency of magnetically labeled cells. For details refer to the section describing the cell separation programs in the respective user manual.

Positive selection with the autoMACS® Pro Separator

1. Prepare and prime the instrument.
2. Apply tube containing the sample and provide tubes for collecting the labeled and unlabeled cell fractions. Place sample tube in row A of the tube rack and the fraction collection tubes in rows B and C.
3. For a standard separation choose the following program:
Positive selection: "Posseld2"
Collect positive fraction in row C of the tube rack.

Positive selection with the autoMACS® Separator

1. Prepare and prime the instrument.
2. Apply tube containing the sample and provide tubes for collecting the labeled and unlabeled cell fractions. Place sample tube at the uptake port and the fraction collection tubes at port neg1 and port pos1.
3. For a standard separation choose the following program:
Positive selection: "Posseld2"
Collect positive fraction from outlet port pos2.

Lin⁻ cell fractionIsolated Lin⁻CD34⁺ cells

Refer to www.miltenyibiotec.com for all data sheets and protocols. Miltenyi Biotec provides technical support worldwide. Visit www.miltenyibiotec.com/local to find your nearest Miltenyi Biotec contact.

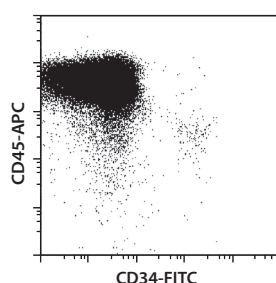
Warnings

Reagents contain sodium azide. Under acidic conditions sodium azide yields hydrazoic acid, which is extremely toxic. Azide compounds should be diluted with running water before discarding. These precautions are recommended to avoid deposits in plumbing where explosive conditions may develop.

3. Example of a separation using the Diamond CD34 Isolation Kit

Lin⁻CD34⁺ cells were isolated from human PBMCs using the Diamond CD34 Isolation Kit, an LD Column, two MS Columns, a MidiMACS™ Separator, and a MiniMACS™ Separator. Cells were fluorescently stained with CD34-FITC (# 130-081-001), CD45-APC (# 130-091-230), and Anti-Biotin-PE (# 130-090-756) and analyzed using the MACSQuant® Analyzer. Cell debris and dead cells were excluded from the analysis based on scatter signals and propidium iodide fluorescence.

PBMCs before separation



Legal notices

Limited product warranty

Miltenyi Biotec B.V. & Co. KG and/or its affiliate(s) warrant this product to be free from material defects in workmanship and materials and to conform substantially with Miltenyi Biotec's published specifications for the product at the time of order, under normal use and conditions in accordance with its applicable documentation, for a period beginning on the date of delivery of the product by Miltenyi Biotec or its authorized distributor and ending on the expiration date of the product's applicable shelf life stated on the product label, packaging or documentation (as applicable) or, in the absence thereof, ONE (1) YEAR from date of delivery ("Product Warranty"). Miltenyi Biotec's Product Warranty is provided subject to the warranty terms as set forth in Miltenyi Biotec's General Terms and Conditions for the Sale of Products and Services available on Miltenyi Biotec's website at www.miltenyibiotec.com, as in effect at the time of order ("Product Warranty"). Additional terms may apply. BY USE OF THIS PRODUCT, THE CUSTOMER AGREES TO BE BOUND BY THESE TERMS. THE CUSTOMER IS SOLELY RESPONSIBLE FOR DETERMINING IF A PRODUCT IS SUITABLE FOR CUSTOMER'S PARTICULAR PURPOSE AND APPLICATION METHODS.

Technical information

The technical information, data, protocols, and other statements provided by Miltenyi Biotec in this document are based on information, tests, or experience which Miltenyi Biotec believes to be reliable, but the accuracy or completeness of such information is not guaranteed. Such technical information and data are intended for persons with knowledge and technical skills sufficient to assess and apply their own informed judgment to the information. Miltenyi Biotec shall not be liable for any technical or editorial errors or omissions contained herein.

All information and specifications are subject to change without prior notice. Please contact Miltenyi Biotec Technical Support or visit www.miltenyibiotec.com for the most up-to-date information on Miltenyi Biotec products.

Licenses

This product and/or its use may be covered by one or more pending or issued patents and/or may have certain limitations. Certain uses may be excluded by separate terms and conditions. Please contact your local Miltenyi Biotec representative or visit Miltenyi Biotec's website at www.miltenyibiotec.com for more information.

The purchase of this product conveys to the customer the non-transferable right to use the purchased amount of the product in research conducted by the customer (whether the customer is an academic or for-profit entity). This product may not be further sold. Additional terms and conditions (including the terms of a Limited Use Label License) may apply.

CUSTOMER'S USE OF THIS PRODUCT MAY REQUIRE ADDITIONAL LICENSES DEPENDING ON THE SPECIFIC APPLICATION. THE CUSTOMER IS SOLELY RESPONSIBLE FOR DETERMINING FOR ITSELF WHETHER IT HAS ALL APPROPRIATE LICENSES IN PLACE. Miltenyi Biotec provides no warranty that customer's use of this product does not and will not infringe intellectual property rights owned by a third party. BY USE OF THIS PRODUCT, THE CUSTOMER AGREES TO BE BOUND BY THESE TERMS.

Trademarks

autoMACS, MACS, MACSQuant, MidiMACS, the Miltenyi Biotec logo, MiniMACS, OctoMACS, QuadroMACS, SuperMACS, and VarioMACS are registered trademarks or trademarks of Miltenyi Biotec and/or its affiliates in various countries worldwide. All other trademarks mentioned in this publication are the property of their respective owners and are used for identification purposes only.

Ficoll-Paque is a trademark of GE Healthcare companies.

Copyright © 2020 Miltenyi Biotec and/or its affiliates. All rights reserved.