

Contents

1. Description
 - 1.1 Principle of the MACS® Separation
 - 1.2 Background information
 - 1.3 Applications
 - 1.4 Reagent and instrument requirements
2. Protocol
 - 2.1 Reconstitution of MicroBeads
 - 2.2 Sample preparation
 - 2.3 Magnetic labeling
 - 2.4 Magnetic separation
3. Example of a separation using the CD4 MicroBeads
4. References

1. Description

Components	1 vial CD4 MicroBeads, human – lyophilized: MicroBeads conjugated to monoclonal anti-human CD4 antibodies (isotype: mouse IgG1). 2 mL Reconstitution Buffer
Capacity	For 10 ⁹ total cells.
Product format	Lyophilized MicroBeads. Reconstitution Buffer contains stabilizer and 0.05% sodium azide.
Storage	Store protected from light at 2–8 °C. Do not freeze. The expiration date is indicated on the vial label. For information about reconstitution of the lyophilized MicroBeads and storage after reconstitution refer to chapter 2.1.

1.1 Principle of the MACS® Separation

First, the CD4⁺ cells are magnetically labeled with CD4MicroBeads. Then, the cell suspension is loaded onto a MACS® Column, which is placed in the magnetic field of a MACS Separator. The magnetically labeled CD4⁺ cells are retained within the column. The unlabeled cells run through; this cell fraction is thus depleted of CD4⁺ cells. After removing the column from the magnetic field, the magnetically retained CD4⁺ cells can be eluted as the positively selected cell fraction.

1.2 Background information

CD4 MicroBeads have been developed for the separation of human cells based on the expression of the CD4 antigen. CD4 is a 55 kDa protein that is highly expressed on T helper cells in the thymus and peripheral blood. In T helper cells, CD4 functions as an accessory molecule for the recognition of MHC class II/peptide complexes by TCR heterodimers. CD4 is also expressed on monocytes and

dendritic cells, albeit at lower levels than on CD4⁺ T helper cells. In conjunction with certain chemokine receptors, CD4 is the primary high-affinity receptor for HIV.

1.3 Applications

- Positive selection or depletion of CD4⁺ T cells from peripheral blood, leukapheresis¹, cord blood, lymph nodes, thymus, spleen, skin biopsies², synovial fluids, bronchial lavages, or cell cultures.

1.4 Reagent and instrument requirements

- Buffer:** Prepare a solution containing phosphate-buffered saline (PBS), pH 7.2, 0.5% bovine serum albumin (BSA), and 2 mM EDTA by diluting MACS BSA Stock Solution (# 130-091-376) 1:20 with autoMACS® Rinsing Solution (# 130-091-222). Keep buffer cold (2–8 °C). Degas buffer before use, as air bubbles could block the column.

▲ **Note:** EDTA can be replaced by other supplements such as anticoagulant citrate dextrose formula-A (ACD-A) or citrate phosphate dextrose (CPD). BSA can be replaced by other proteins such as human serum albumin, human serum, or fetal bovine serum (FBS). Buffers or media containing Ca²⁺ or Mg²⁺ are not recommended for use.

- MACS Columns and MACS Separators:** CD4⁺ cells can be enriched by using MS, LS, or XS Columns or depleted with the use of LD, CS, or D Columns. Cells that strongly express the CD4 antigen can also be depleted using MS, LS, or XS Columns. Positive selection or depletion can also be performed by using the autoMACS Pro or the autoMACS Separator.

Column	Max. number of labeled cells	Max. number of total cells	Separator
Positive selection			
MS	10 ⁷	2×10 ⁸	MiniMACS, OctoMACS, VarioMACS, SuperMACS II
LS	10 ⁸	2×10 ⁹	MidiMACS, QuadroMACS, VarioMACS, SuperMACS II
XS	10 ⁹	2×10 ¹⁰	SuperMACS II
Depletion			
LD	10 ⁸	5×10 ⁸	MidiMACS, QuadroMACS, VarioMACS, SuperMACS II
CS	2×10 ⁸		VarioMACS, SuperMACS II
D	10 ⁹		SuperMACS II
Positive selection or depletion			
autoMACS	2×10 ⁸	4×10 ⁹	autoMACS Pro, autoMACS

▲ **Note:** Column adapters are required to insert certain columns into the VarioMACS™ or SuperMACS™ II Separators. For details refer to the respective MACS Separator data sheet.

- (Optional) Fluorochrome-conjugated CD4 antibodies for flow cytometric analysis, e.g., CD4-FITC (# 130-080-501). For more information about antibodies refer to www.miltenyibiotec.com/antibodies.

- (Optional) Propidium Iodide Solution (# 130-093-233) or 7-AAD for flow cytometric exclusion of dead cells.
- (Optional) Dead Cell Removal Kit (# 130-090-101) for the depletion of dead cells.
- (Optional) Pre-Separation Filters, 30 μm (# 130-041-407) to remove cell clumps.

2. Protocol

2.1 Reconstitution of MicroBeads

Reconstitute the lyophilized MicroBeads by adding all Reconstitution Buffer to the vial. Mix by pipetting up and down until resuspended. After reconstitution the MicroBeads are stable for 9 months at 2–8 °C. Write the new expiration date after reconstitution on the vial label.

2.2 Sample preparation

When working with anticoagulated peripheral blood or buffy coat, peripheral blood mononuclear cells (PBMCs) should be isolated by density gradient centrifugation, for example, using Ficoll-Paque™.

▲ **Note:** To remove platelets after density gradient separation, resuspend cell pellet in buffer and centrifuge at 200×g for 10–15 minutes at 20 °C. Carefully aspirate supernatant. Repeat washing step.

When working with tissues or lysed blood, prepare a single-cell suspension using standard methods.

For details refer to the protocols section at www.miltenyibiotec.com/protocols.

▲ Dead cells may bind non-specifically to MACS MicroBeads. To remove dead cells, we recommend using density gradient centrifugation or the Dead Cell Removal Kit (# 130-090-101).

For the isolation of highly pure T helper cells, monocytes should be depleted prior to CD4⁺ T cell enrichment, using CD14 MicroBeads (# 130-050-201).

For a detailed protocol refer to the special protocol “Isolation of CD4⁺ T helper cells” at www.miltenyibiotec.com/protocols.



2.3 Magnetic labeling

▲ Work fast, keep cells cold, and use pre-cooled solutions. This will prevent capping of antibodies on the cell surface and non-specific cell labeling.

▲ Volumes for magnetic labeling given below are for up to 10⁷ total cells. When working with fewer than 10⁷ cells, use the same volumes as indicated. When working with higher cell numbers, scale up all reagent volumes and total volumes accordingly (e.g. for 2×10⁷ total cells, use twice the volume of all indicated reagent volumes and total volumes).

▲ For optimal performance it is important to obtain a single-cell suspension before magnetic labeling. Pass cells through 30 μm nylon mesh (Pre-Separation Filters, 30 μm # 130-041-407) to remove cell clumps which may clog the column. Moisten filter with buffer before use.

▲ The recommended incubation temperature is 2–8 °C. Higher temperatures and/or longer incubation times may lead to non-specific cell labeling. Working on ice may require increased incubation times.

1. Determine cell number.
2. Centrifuge cell suspension at 300×g for 10 minutes. Aspirate supernatant completely.
3. Resuspend cell pellet in 80 μL of buffer per 10⁷ total cells.
4. Add 20 μL of CD4 MicroBeads per 10⁷ total cells.
5. Mix well and incubate for 15 minutes in the refrigerator (2–8 °C).
6. (Optional) Add staining antibodies, e.g., 10 μL of CD4-FITC (# 130-080-501), and incubate for 5 minutes in the dark in the refrigerator (2–8 °C).
7. Wash cells by adding 1–2 mL of buffer per 10⁷ cells and centrifuge at 300×g for 10 minutes. Aspirate supernatant completely.
8. Resuspend up to 10⁸ cells in 500 μL of buffer.
▲ **Note:** For higher cell numbers, scale up buffer volume accordingly.
▲ **Note:** For depletion with LD Columns, resuspend up to 1.25×10⁸ cells in 500 μL of buffer.
9. Proceed to magnetic separation (2.3).



2.4 Magnetic separation

▲ Choose an appropriate MACS Column and MACS Separator according to the number of total cells and the number of CD4⁺ cells. For details refer to the table in section 1.4.

▲ Always wait until the column reservoir is empty before proceeding to the next step.

Magnetic separation with MS or LS Columns

1. Place column in the magnetic field of a suitable MACS Separator. For details refer to the respective MACS Column data sheet.
2. Prepare column by rinsing with the appropriate amount of buffer:

MS: 500 μL LS: 3 mL

3. Apply cell suspension onto the column. Collect flow-through containing unlabeled cells.
4. Wash column with the appropriate amount of buffer. Collect unlabeled cells that pass through and combine with the flow-through from step 3.

MS: 3×500 μL LS: 3×3 mL

▲ **Note:** Perform washing steps by adding buffer aliquots only when the column reservoir is empty.

5. Remove column from the separator and place it on a suitable collection tube.
6. Pipette the appropriate amount of buffer onto the column. Immediately flush out the magnetically labeled cells by firmly pushing the plunger into the column.

MS: 1 mL LS: 5 mL

7. (Optional) To increase the purity of CD4⁺ cells, the eluted fraction can be enriched over a second MS or LS Column. Repeat the magnetic separation procedure as described in steps 1 to 6 by using a new column.

Magnetic separation with XS Columns

For instructions on the column assembly and the separation refer to the XS Column data sheet.

Depletion with LD Columns

1. Place LD Column in the magnetic field of a suitable MACS Separator. For details refer to the LD Column data sheet.
2. Prepare column by rinsing with 2 mL of buffer.
3. Apply cell suspension onto the column.
4. Collect unlabeled cells that pass through and wash column with 2×1 mL of buffer. Collect total flow-through; this is the unlabeled cell fraction. Perform washing steps by adding buffer two times. Only add new buffer when the column reservoir is empty.

Depletion with CS Columns

1. Assemble CS Column and place it in the magnetic field of a suitable MACS Separator. For details refer to the CS Column data sheet.
2. Prepare column by filling and rinsing with 60 mL of buffer. Attach a 22G flow resistor to the 3-way stopcock of the assembled column. For details refer to the CS Column data sheet.
3. Apply cell suspension onto the column.
4. Collect unlabeled cells that pass through and wash column with 30 mL buffer from the top. Collect total flow-through; this is the unlabeled cell fraction.

Depletion with D Columns

For instructions on column assembly and separation refer to the D Column data sheet.

Magnetic separation with the autoMACS® Pro Separator or the autoMACS® Separator

▲ Refer to the respective user manual for instructions on how to use the autoMACS® Pro Separator or the autoMACS Separator.

▲ Buffers used for operating the autoMACS Pro Separator or the autoMACS Separator should have a temperature of $\geq 10^\circ\text{C}$.

▲ Program choice depends on the isolation strategy, the strength of magnetic labeling, and the frequency of magnetically labeled cells. For details refer to the section describing the cell separation programs in the respective user manual.

Magnetic separation with the autoMACS® Pro Separator

1. Prepare and prime the instrument.
2. Apply tube containing the sample and provide tubes for collecting the labeled and unlabeled cell fractions. Place sample tube in row A of the tube rack and the fraction collection tubes in rows B and C.
3. For a standard separation choose one of the following programs:

Positive selection: Possel

Collect positive fraction in row C of the tube rack.

Depletion: Depletes

Collect negative fraction in row B of the tube rack.

Magnetic separation with the autoMACS® Separator

1. Prepare and prime the instrument.
2. Apply tube containing the sample and provide tubes for collecting the labeled and unlabeled cell fractions. Place sample tube at the uptake port and the fraction collection tubes at port neg1 and pos1.
3. For a standard separation choose one of the following programs:

Positive selection: Possel

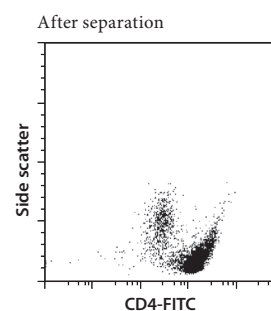
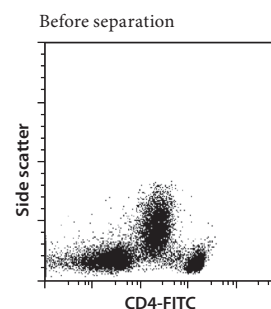
Collect positive fraction from outlet pos1.

Depletion: Depletes

Collect negative fraction from outlet port neg1.

3. Example of a separation using CD4 MicroBeads

CD4 MicroBeads were reconstituted as described in 2.1. CD4⁺ cells were isolated from human PBMCs using CD4 MicroBeads, an MS Column, and a MiniMACS™ Separator. Cells were fluorescently stained with CD4-FITC (# 130-080-501) and analyzed by flow cytometry using the MACSQuant® Analyzer. Cell debris and dead cells were excluded from the analysis based on scatter signals and propidium iodide fluorescence.



4. References

1. Jonuleit, H. *et al.* (2000) Induction of interleukin 10-producing, nonproliferating CD4(+) T cells with regulatory properties by repetitive stimulation with allogeneic immature human dendritic cells. *J. Exp. Med.* 192: 1213–1222.
2. Akdis, M. *et al.* (1999) Skin homing (cutaneous lymphocyte-associated antigen-positive) CD8⁺ T cells respond to superantigen and contribute to eosinophilia and IgE production in atopic dermatitis. *J. Immunol.* 163: 466–475.

Refer to www.miltenyibiotec.com for all data sheets and protocols. Miltenyi Biotec provides technical support worldwide. Visit www.miltenyibiotec.com/local to find your nearest Miltenyi Biotec contact.

Warnings

Reagents contain sodium azide. Under acidic conditions sodium azide yields hydrazoic acid, which is extremely toxic. Azide compounds should be diluted with running water before discarding. These precautions are recommended to avoid deposits in plumbing where explosive conditions may develop.

Legal notices

Limited product warranty

Miltenyi Biotec B.V. & Co. KG and/or its affiliate(s) warrant this product to be free from material defects in workmanship and materials and to conform substantially with Miltenyi Biotec's published specifications for the product at the time of order, under normal use and conditions in accordance with its applicable documentation, for a period beginning on the date of delivery of the product by Miltenyi Biotec or its authorized distributor and ending on the expiration date of the product's applicable shelf life stated on the product label, packaging or documentation (as applicable) or, in the absence thereof, ONE (1) YEAR from date of delivery ("Product Warranty"). Miltenyi Biotec's Product Warranty is provided subject to the warranty terms as set forth in Miltenyi Biotec's General Terms and Conditions for the Sale of Products and Services available on Miltenyi Biotec's website at www.miltenyibiotec.com, as in effect at the time of order ("Product Warranty"). Additional terms may apply. BY USE OF THIS PRODUCT, THE CUSTOMER AGREES TO BE BOUND BY THESE TERMS.

THE CUSTOMER IS SOLELY RESPONSIBLE FOR DETERMINING IF A PRODUCT IS SUITABLE FOR CUSTOMER'S PARTICULAR PURPOSE AND APPLICATION METHODS.

Technical information

The technical information, data, protocols, and other statements provided by Miltenyi Biotec in this document are based on information, tests, or experience which Miltenyi Biotec believes to be reliable, but the accuracy or completeness of such information is not guaranteed. Such technical information and data are intended for persons with knowledge and technical skills sufficient to assess and apply their own informed judgment to the information. Miltenyi Biotec shall not be liable for any technical or editorial errors or omissions contained herein.

All information and specifications are subject to change without prior notice. Please contact Miltenyi Biotec Technical Support or visit www.miltenyibiotec.com for the most up-to-date information on Miltenyi Biotec products.

Licenses

This product and/or its use may be covered by one or more pending or issued patents and/or may have certain limitations. Certain uses may be excluded by separate terms and conditions. Please contact your local Miltenyi Biotec representative or visit Miltenyi Biotec's website at www.miltenyibiotec.com for more information.

The purchase of this product conveys to the customer the non-transferable right to use the purchased amount of the product in research conducted by the customer (whether the customer is an academic or for-profit entity). This product may not be further sold. Additional terms and conditions (including the terms of a Limited Use Label License) may apply.

CUSTOMER'S USE OF THIS PRODUCT MAY REQUIRE ADDITIONAL LICENSES DEPENDING ON THE SPECIFIC APPLICATION. THE CUSTOMER IS SOLELY RESPONSIBLE FOR DETERMINING FOR ITSELF WHETHER IT HAS ALL APPROPRIATE LICENSES IN PLACE. Miltenyi Biotec provides no warranty that customer's use of this product does not and will not infringe intellectual property rights owned by a third party. BY USE OF THIS PRODUCT, THE CUSTOMER AGREES TO BE BOUND BY THESE TERMS.

Trademarks

autoMACS, MACS, MACSQuant, MidiMACS, the Miltenyi Biotec logo, MiniMACS, OctoMACS, QuadroMACS, SuperMACS, and VarioMACS are registered trademarks or trademarks of Miltenyi Biotec and/or its affiliates in various countries worldwide. All other trademarks mentioned in this publication are the property of their respective owners and are used for identification purposes only.

Ficoll-Paque is a trademark of GE Healthcare companies.

Copyright © 2020 Miltenyi Biotec and/or its affiliates. All rights reserved.