

## Contents

### 1. Description

#### 1.1. Background information

#### 1.2 Applications

#### 1.3 Recommended dye dilution

#### 1.4 Reagent requirements

### 2. Protocols

#### 2.1 Preparation

#### 2.2 Staining with Viability Fixable Dye prior to staining surface or intracellular markers

#### 2.3 Staining with Viability Fixable Dye and staining surface markers simultaneously

### 3. Examples of dead cell staining with Viability Fixable Dyes

## 1. Description

This product is for research use only.

### Products

Dye	Order no. 100 tests	Order no. 5×100 tests
Viability 405/452 Fixable Dye	130-130-403	130-130-420
Viability 405/520 Fixable Dye	130-130-404	130-130-421
Viability 640/770 Fixable Dye	130-134-046	130-134-075

### Capacity

100 tests for up to 10<sup>9</sup> total cells

or

5×100 tests for up to 5×10<sup>9</sup> total cells.

### Product format

For 100 tests: 1 vial of 100 µL dye dissolved in anhydrous DMSO.

For 5×100 tests: 5 vials of 100 µL dye dissolved in anhydrous DMSO.

### Storage

Store dry and protected from light at –20 °C. The expiration date is indicated on the vial labels. For information about storage after opening of vials refer to chapter 2.1.

#### 1.1 Background information

The Viability Fixable Dyes have been developed for the detection and discrimination of dead cells. They react with the primary amine groups of proteins which can be found on the cell surface as well as intracellularly. In contrast to viable cells, dead cells exhibit a compromised cell membrane allowing the Viability Fixable Dyes to enter the cell and stain proteins within the cell. This results in a up to 50-fold brighter fluorescent staining and thus allows the discrimination of dead and viable cells by using a flow cytometer.

#### 1.2 Applications

- Analysis of cell viability and exclusion of dead cells by flow cytometric analysis.
- Labeling of dead cells before fixation.

#### 1.3 Recommended dye dilution

The recommended dye dilution is **1 µL for up to 10<sup>7</sup> cells/100 µL** of phosphate-buffered saline (PBS) for staining of dead cells prior to downstream labeling of cells for flow cytometric analysis.

#### 1.4 Reagent requirements

- Phosphate-buffered saline (PBS) without azide, protein, or other amine-containing compound, pH 7.2.
- PEB buffer: Prepare a solution containing PBS, pH 7.2, 0.5% bovine serum albumin (BSA), and 2 mM EDTA by diluting MACS® BSA Stock Solution (# 130-091-376) 1:20 with autoMACS® Rinsing Solution (# 130-091-222). Keep buffer cold (+2 to +8 °C).

▲ **Note:** EDTA can be replaced by other supplements such as anticoagulant citrate dextrose formula-A (ACD-A) or citrate phosphate dextrose (CPD). Buffers or media containing Ca<sup>2+</sup> or Mg<sup>2+</sup> are not recommended for use.

## 2. Protocols

### 2.1. Preparation

Let the vials warm up to room temperature to avoid water condensation. Aliquot the solution and store at –20 °C under anhydrous conditions (desiccant) and protected from light for up to 1 month.

### 2.2 Staining with Viability Fixable Dye prior to staining surface or intracellular markers

▲ Volumes given below are for **up to 10<sup>7</sup>** nucleated cells. When working with fewer than 10<sup>7</sup> cells, use the same volumes as indicated. When working with higher cell numbers, scale up all reagent volumes and total volumes accordingly (e.g. for 2×10<sup>7</sup> nucleated cells, use twice the volume of all indicated reagent volumes and total volumes).

1. Determine cell number.
2. Wash cells in 1 mL of 1× PBS and centrifuge at 300×g for 10 minutes. Aspirate supernatant completely.
3. Resuspend cells in 100 µL of 1× PBS.
4. Add 1 µL of Viability Fixable Dye.
5. Mix well and incubate for 15 minutes in the dark at room temperature.

▲ **Note:** Higher temperatures and/or longer incubation times may lead to non-specific cell labeling. Working on ice requires increased incubation times.

- Wash cells by adding 1 mL PEB buffer and centrifuge at 300×g for 10 minutes. Aspirate supernatant completely.
- (Optional) Repeat step 6.
- Proceed with surface or intracellular staining as described in the respective antibody data sheet.

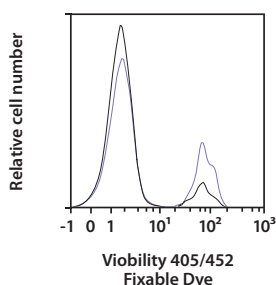
### 2.3 Staining with Viability Fixable Dye and staining surface markers simultaneously

▲ Volumes given below are for up to  $10^7$  nucleated cells. When working with fewer than  $10^7$  cells, use the same volumes as indicated. When working with higher cell numbers, scale up all reagent volumes and total volumes accordingly (e.g. for  $2 \times 10^7$  nucleated cells, use twice the volume of all indicated reagent volumes and total volumes).

- Add 1  $\mu$ L of Viability Fixable Dye to 100  $\mu$ L 1× PBS.
- Determine cell number.
- Wash cells in 1 mL of 1× PBS and centrifuge at 300×g for 10 minutes. Aspirate supernatant completely.
- Resuspend cells in the prepared solution from step 1. The final volume after addition of antibodies (step 6) should be 110  $\mu$ L, for example, when using 30  $\mu$ L of antibodies, use 80  $\mu$ L solution.
- Mix well and incubate for 5–10 minutes in the dark at room temperature.  
▲ Higher temperatures and/or longer incubation times may lead to non-specific cell labeling. Working on ice requires increased incubation times.
- Add antibodies and incubate for 10 minutes in the dark at room temperature.
- Wash cells by adding 1 mL PEB buffer and centrifuge at 300×g for 10 minutes. Aspirate supernatant completely.
- (Optional) Repeat step 7.
- Resuspend cell pellet in a suitable amount of buffer for analysis by flow cytometry or fluorescence microscopy.

### 3. Example of dead cell staining with Viability Fixable Dyes

Two samples of human PBMCs (treated as above) were stained with Viability 405/452 Fixable Dye. One sample was fixed, using the Inside Stain Kit (purple line), the other sample was not fixed (black line) and analyzed by flow cytometry using the MACSQuant® Analyzer.



Refer to [www.miltenyibiotec.com](http://www.miltenyibiotec.com) for all data sheets and protocols. Miltenyi Biotec provides technical support worldwide. Visit [www.miltenyibiotec.com](http://www.miltenyibiotec.com) for local Miltenyi Biotec Technical Support contact information.

## Legal notices

### Limited product warranty

Miltenyi Biotec B.V. & Co. KG and/or its affiliate(s) warrant this product to be free from material defects in workmanship and materials and to conform substantially with Miltenyi Biotec's published specifications for the product at the time of order, under normal use and conditions in accordance with its applicable documentation, for a period beginning on the date of delivery of the product by Miltenyi Biotec or its authorized distributor and ending on the expiration date of the product's applicable shelf life stated on the product label, packaging or documentation (as applicable) or, in the absence thereof, ONE (1) YEAR from date of delivery ("Product Warranty"). Miltenyi Biotec's Product Warranty is provided subject to the warranty terms as set forth in Miltenyi Biotec's General Terms and Conditions for the Sale of Products and Services available on Miltenyi Biotec's website at [www.miltenyibiotec.com](http://www.miltenyibiotec.com), as in effect at the time of order ("Product Warranty"). Additional terms may apply. BY USE OF THIS PRODUCT, THE CUSTOMER AGREES TO BE BOUND BY THESE TERMS.

THE CUSTOMER IS SOLELY RESPONSIBLE FOR DETERMINING IF A PRODUCT IS SUITABLE FOR CUSTOMER'S PARTICULAR PURPOSE AND APPLICATION METHODS.

### Technical information

The technical information, data, protocols, and other statements provided by Miltenyi Biotec in this document are based on information, tests, or experience which Miltenyi Biotec believes to be reliable, but the accuracy or completeness of such information is not guaranteed. Such technical information and data are intended for persons with knowledge and technical skills sufficient to assess and apply their own informed judgment to the information. Miltenyi Biotec shall not be liable for any technical or editorial errors or omissions contained herein.

All information and specifications are subject to change without prior notice. Please contact Miltenyi Biotec Technical Support or visit [www.miltenyibiotec.com](http://www.miltenyibiotec.com) for the most up-to-date information on Miltenyi Biotec products.

### Licenses

This product and/or its use may be covered by one or more pending or issued patents and/or may have certain limitations. Certain uses may be excluded by separate terms and conditions. Please contact your local Miltenyi Biotec representative or visit Miltenyi Biotec's website at [www.miltenyibiotec.com](http://www.miltenyibiotec.com) for more information.

The purchase of this product conveys to the customer the non-transferable right to use the purchased amount of the product in research conducted by the customer (whether the customer is an academic or for-profit entity). This product may not be further sold. Additional terms and conditions (including the terms of a Limited Use Label License) may apply.

CUSTOMER'S USE OF THIS PRODUCT MAY REQUIRE ADDITIONAL LICENSES DEPENDING ON THE SPECIFIC APPLICATION. THE CUSTOMER IS SOLELY RESPONSIBLE FOR DETERMINING FOR ITSELF WHETHER IT HAS ALL APPROPRIATE LICENSES IN PLACE. Miltenyi Biotec provides no warranty that customer's use of this product does not and will not infringe intellectual property rights owned by a third party. BY USE OF THIS PRODUCT, THE CUSTOMER AGREES TO BE BOUND BY THESE TERMS.

### Trademarks

autoMACS, MACS, MACSQuant, the Miltenyi Biotec logo, and Viability are registered trademarks or trademarks of Miltenyi Biotec and/or its affiliates in various countries worldwide.

Copyright © 2024 Miltenyi Biotec and/or its affiliates. All rights reserved.