



Miltenyi Biotec

# The CliniMACS® Electroporator

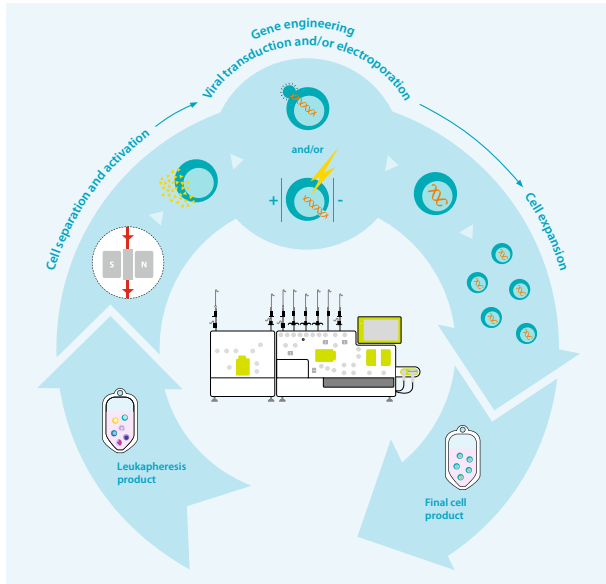
Non-viral gene engineering in a closed system

- Standardized, automated process:  
GMP-compliant cell transfection by  
CliniMACS Prodigy® and CliniMACS Electroporator
- Closed system:  
Reduced clean room requirements,  
increased product and operator safety
- Flexibility:  
Fully flexible electroporation parameter input  
for different cell types
- Scalability:  
Easy and cost-efficient parameter optimization  
and scale-up

► [miltenyibiotec.com/prodigy](https://miltenyibiotec.com/prodigy)

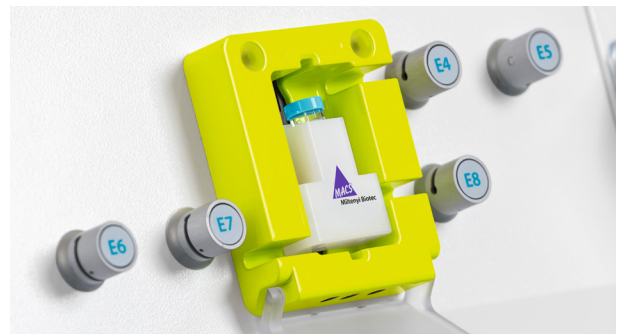


The CliniMACS Prodigy automates cell processing from starting material to final cell product in a single benchtop instrument. The CliniMACS Electroporator now expands the possibilities of cell manipulation with non-viral gene engineering. All major manufacturing steps are automated and standardized in a closed system to enable the production of GMP-compliant cell products.



**Figure 1:** The CliniMACS Prodigy T Cell Engineering workflow is used for the manufacturing of gene-engineered T cells.

- Seamless integration of the transfection step into a cell processing workflow on the CliniMACS Prodigy.
- Closed, single-use tubing sets with integrated electroporation cuvette.
- Fully flexible electroporation parameters; wide range of voltages and pulse modes.
- Cells and nucleic acids stay separated until the electroporation pulse to minimize degradation of nucleic acids.
- Software guides the operator through all interactions.
- Parameter optimization in cost-effective small-scale experiments.



**Figure 2:** The Test Cuvette Adapter for parameter optimization in small-scale.



**Figure 3:** Complex cell manufacturing processes, including electroporation, are performed in the closed system of the CliniMACS Prodigy.

**Profit from automated and closed system cell transfection. The winning combination of the CliniMACS Prodigy and the CliniMACS Electroporator delivers reliable and consistent results for your cell products.**

#### Related Products

<b>CliniMACS Prodigy EP-2</b>	Tubing Set module with integrated electroporation cuvette (2 mm electrode distance) to be connected to a CliniMACS Prodigy Tubing Set
<b>CliniMACS Prodigy EP-4</b>	Tubing Set module with integrated electroporation cuvette (4 mm electrode distance) to be connected to a CliniMACS Prodigy Tubing Set
<b>CliniMACS Electroporation Buffer</b>	Optimized buffer solution for all automated electroporation processes

VISIT

Ask your local Miltenyi Biotec representative for more information or visit

► [miltenyibiotec.com/prodigy](https://www.miltenyibiotec.com/prodigy)



Miltenyi Biotec provides products and services worldwide. Visit [www.miltenyibiotec.com/local](https://www.miltenyibiotec.com/local) to find your nearest Miltenyi Biotec contact.

Unless otherwise specifically indicated, Miltenyi Biotec products and services are for research use only and not for therapeutic or diagnostic use. For further regulatory notes, refer to [miltenyibiotec.com/regulatory-notes](https://www.miltenyibiotec.com/regulatory-notes). MACS, CliniMACS, CliniMACS Prodigy, and the Miltenyi Biotec logo are registered trademarks or trademarks of Miltenyi Biotec and/or its affiliates in various countries worldwide. Copyright © 2021 Miltenyi Biotec and/or its affiliates. All rights reserved.