

Contents

1. Description
 - 1.1 Principle of T Cell Activation/Expansion Kit
 - 1.2 Background information
 - 1.3 Applications
 - 1.4 Reagent and instrument requirements
2. Protocol
 - 2.1 Sample preparation
 - 2.2 Loading of Anti-Biotin MACSiBead™ Particles
 - 2.3 T cell activation protocol
 - 2.4 T cell expansion protocol
 - 2.5 Immunofluorescent staining
 - 2.6 Removal of Anti-Biotin MACSiBead™ Particles
3. Examples of T cell activation and T cell expansion using the T Cell Activation/Expansion Kit
4. Appendix: Flask and dish sizes for T cell expansion

1. Description

This product is for research use only.

Components	2 mL Anti-Biotin MACSiBead™ Particles, cell culture grade , corresponding to 4×10^8 MACSiBead Particles; MACSiBead Particles conjugated to monoclonal anti-biotin antibodies 0.4 mL CD2-Biotin, human (100 µg/mL) 0.4 mL CD3-Biotin, human (100 µg/mL) 0.4 mL CD28-Biotin, human (100 µg/mL)
Product format	All components are supplied in azide-free buffer containing stabilizer. Low endotoxin.
Storage	Store protected from light at 2–8 °C. Do not freeze. The expiration date is indicated on the vial label.

1.1 Principle of T Cell Activation/Expansion Kit

The T Cell Activation/Expansion Kit has been designed to activate and, if required, expand human T cells. The kit consists of Anti-Biotin MACSiBead Particles and biotinylated antibodies against human CD2, CD3, and CD28. Anti-Biotin MACSiBead Particles loaded with biotinylated antibodies are used to mimic antigen-presenting cells and activate resting T cells from peripheral blood mononuclear cells (PBMCs) as well as purified T cells. T cell expansion is achieved by culturing and reactivation at day 14 of culture.

1.2 Background information

The Anti-Biotin MACSiBead Particles are in a first step loaded with biotinylated antibodies. An optimal activation is achieved by using equal amounts of the provided biotinylated antibodies against CD2, CD3, and CD28.

▲ **Note:** Other combinations of biotinylated antibodies may be experimentally tested for their suitability, if required.

Loaded Anti-Biotin MACSiBead Particles are subsequently used for the activation of T cells. An optimal activation of T cells is accomplished by using one loaded Anti-Biotin MACSiBead Particle per two cells (bead-to-cell ratio 1:2). The cells are cultured for up to 3 days and can be further expanded, if desired. Expansion is achieved by adding interleukin 2 (IL-2) and fresh medium every 3–4 days. Cells are restimulated at day 14 by adding additional loaded Anti-Biotin MACSiBead Particles at a bead-to-cell ratio of 1:2.

▲ The efficiency of the T cell activation depends on their differentiation status, which will often be heterogeneous. For special applications, it is therefore recommended to experimentally determine the best stimulation ratio.

▲ Over-activation of T cells carries a risk of activation-induced cell death.

T cells, activated by using Anti-Biotin MACSiBead Particles, can be used for any downstream processing such as cytokine analysis or immunoprecipitation. Also, activated T cells can be transfected with high efficiency.

Anti-Biotin MACSiBead Particles show no autofluorescence and normally do not need to be removed prior to flow cytometric analysis. However, if desired, removal of Anti-Biotin MACSiBead Particles is easily achieved by using the MACSiMAG™ Separator (refer to section 2.6).

1.3 Applications

- Activation and expansion of resting T cells from PBMCs.
- Activation and expansion of T cells positively selected with MicroBeads, e.g., CD4 MicroBeads (# 130-045-101) or CD8 MicroBeads (# 130-045-201), or untouched T cells isolated using the Pan T Cell Isolation Kit, human (# 130-096-535), CD4⁺ T Cell Isolation Kit, human (# 130-096-533), or CD8⁺ T Cell Isolation Kit, human (# 130-096-495).
- Expansion of antigen-specific T cells.

1.4 Reagent and instrument requirements

- **Buffer:** Prepare a solution containing phosphate-buffered saline (PBS), pH 7.2, 0.5% human serum albumin (HSA), and 2 mM EDTA. Keep buffer cold (2–8 °C). Degas buffer before use, as air bubbles could block the column.

▲ **Note:** HSA can be replaced by other proteins such as bovine serum albumin (BSA), fetal bovine serum (FBS), or human AB serum. Buffers or media containing Ca²⁺ or Mg²⁺ are not recommended for use.

- **Medium:** TexMACS™ Medium (# 130-097-196) or RPMI 1640 supplemented with 10% AB serum.

▲ **Note:** 2-Mercaptoethanol (0.01 mM) can be added to preserve cell viability in case of rapid cell growth.

- (Optional) Cell expansion bags or flat bottom cell culture plates with lids.

- Humidified incubator
- MACSmix™ Tube Rotator (# 130-090-753) for loading of MACSiBead Particles.
- (Optional) MACSiMAG™ Separator for removal of Anti-Biotin MACSiBead™ Particles after T cell expansion prior to downstream experiments.
▲ **Note:** Do not remove MACSiBead Particles by using MACS® Columns and MiniMACS™, MidiMACS™, VarioMACS™, SuperMACS™ II, or autoMACS® Pro Separators.
- (Optional) Fluorochrome-conjugated antibodies for flow cytometric analysis, for example, CD4, CD8, or CD25 antibodies. For more information about antibodies refer to www.miltenyibiotec.com/antibodies.
- (Optional) Propidium Iodide Solution (# 130-093-233) or 7-AAD Staining Solution (# 130-111-568) for the flow cytometric exclusion of dead cells.
- (Optional) Recombinant interleukin-2 (rIL-2), e.g. Human IL-2 IS, premium grade (# 130-097-745).

2. Protocol

▲ All steps in the protocol have to be performed under sterile conditions.

2.1 Sample preparation

When working with anticoagulated peripheral blood or buffy coat, peripheral blood mononuclear cells (PBMCs) should be isolated by density gradient centrifugation, for example, using Ficoll-Paque™.

▲ **Note:** To remove platelets after density gradient separation, resuspend cell pellet in buffer and centrifuge at 200×g for 10–15 minutes at 20 °C. Carefully aspirate supernatant. Repeat washing step.

When working with tissues or lysed blood, prepare a single-cell suspension using standard methods.

For details refer to the protocols section at www.miltenyibiotec.com/protocols.

▲ Dead cells may bind non-specifically to MACS MicroBeads. To remove dead cells, we recommend using density gradient centrifugation or the Dead Cell Removal Kit (# 130-090-101).

2.2 Loading of Anti-Biotin MACSiBead™ Particles

▲ Resuspend Anti-Biotin MACSiBead™ Particles thoroughly by vortexing **before use**, to obtain a homogenous suspension.

▲ Anti-Biotin MACSiBead Particles are supplied without preservative. Remove aliquots under aseptic conditions.

▲ It is recommended to load Anti-Biotin MACSiBead Particles in batches of 1×10^8 Anti-Biotin MACSiBead Particles. Loaded Anti-Biotin MACSiBead Particles are stable for up to 4 months when stored at 2–8 °C.

1. Pipette 100 µL of CD2-Biotin, 100 µL CD3-Biotin, and 100 µL CD28-Biotin into sealable 2 mL tube and mix well.
▲ **Note:** This antibody combination, with a final antibody concentration of 10 µg per antibody per 1 mL loaded Anti-Biotin MACSiBead Particles, is optimized for achieving maximal T cell activation.
2. **Resuspend** Anti-Biotin MACSiBead Particles **thoroughly** by vortexing.

3. Remove 500 µL Anti-Biotin MACSiBead Particles (1×10^8 Anti-Biotin MACSiBead Particles) and add to antibody mix.
4. Add 200 µL buffer to adjust to a total volume of 1 mL.
▲ **Note:** Anti-Biotin MACSiBead Particles can be loaded in a flexible manner with biotinylated antibodies or ligands other than those supplied. If desired, add other biotinylated antibodies or ligands at appropriate concentrations and adjust with buffer to a total volume of 1 mL, accordingly.
5. Incubate for 2 hours at 2–8 °C under constant, gentle rotation by using the MACSmix Tube Rotator at slowest permanent run program.
6. The **loaded Anti-Biotin MACSiBead Particles** (1×10^8 Anti-Biotin MACSiBead Particles/mL) are now ready to use. **Do not remove the loaded Anti-Biotin MACSiBead Particles from the antibody mix.** Store at 2–8 °C for up to 4 months.

2.3 T cell activation protocol

This T cell activation protocol is optimized for strong activation of PBMCs, using one loaded Anti-Biotin MACSiBead Particle per two PBMCs or T cells (bead-to-cell ratio 1:2). The same bead-to-cell ratio is recommended when activating purified T cells.

▲ **Note:** Other ratios than 1:2 of loaded Anti-Biotin MACSiBead Particles per cell may be required for other applications (refer to 1.2 Background information).

▲ Volumes for activation given below are for up to 5×10^6 PBMCs. When working with higher cell numbers, scale up all reagent volumes and total volumes, accordingly (e.g. for 1×10^7 total cells, use twice the volume of all indicated reagent volumes and total volumes).

▲ For the activation of purified T cells, cultivate T cells at 2.5×10^6 cells per mL per cm^2 .

1. Resuspend **loaded Anti-Biotin MACSiBead Particles** thoroughly and transfer 25 µL (2.5×10^6 loaded Anti-Biotin MACSiBead Particles) per 5×10^6 PBMCs to a suitable tube.
▲ **Note:** If unloaded MACSiBead Particles shall be used for negative control experiments, replace loaded Anti-Biotin MACSiBead Particles by adding 12.5 µL (2.5×10^6 beads) of unloaded Anti-Biotin MACSiBead Particles per 5×10^6 PBMCs.
2. Add 100–200 µL culture medium to the **loaded Anti-Biotin MACSiBead Particles** and centrifuge at 300×g for 5 minutes.
3. Aspirate supernatant and resuspend **loaded Anti-Biotin MACSiBead Particles** in 100 µL fresh culture medium.
4. Resuspend PBMCs at a density of 5×10^6 cells per 900 µL of culture medium TexMACS™ Medium (# 130-097-196) or RPMI 1640 supplemented with 10% AB serum.
▲ **Note:** Defined media, e.g. TexMACS Medium, might be advantageous for T cell expansion.
5. Add the prepared Anti-Biotin MACSiBead Particles from step 3 to the 900 µL of cell suspension and mix well.
6. Add the mixture to a suitable cell culture vessel at a density of 5×10^6 cells per mL per cm^2 .
7. Incubate at 37 °C, 5–10% CO₂ for up to 3 days.
▲ **Note:** Inspect cultures daily, and add fresh medium if required.
8. For T cell expansion, proceed to step 2 of the T cell expansion protocol (refer to section 2.4). For immunofluorescent staining proceed to 2.5.

2.4 T cell expansion protocol

As T cells are activated and expand, the addition of further growth factors and stimuli, such as more loaded Anti-Biotin MACSiBead™ Particles is required. The following procedure is a guideline for the stimulation and expansion of T cells.

1. Perform steps 1–7 as described under section 2.3 (T cell activation protocol).
2. At day 3 gently pipette cell suspension up and down to break up clumps.
3. Split cell suspension into two equal parts and add culture medium supplemented with 20 units rIL-2 per mL. Incubate at 37 °C, 5–10% CO₂.
▲ **Note:** If rIL-2 interferes with downstream experiments, it may be omitted. However, omission will lower the cell viability.
4. At day 7 gently pipette cell suspension up and down to break up clumps. Count T cells and dilute to 1.2–2.5×10⁶ T cells per mL by adding fresh medium supplemented with 20 units rIL-2 per mL.
5. At day 11, split cell suspension into two equal parts and add fresh medium supplemented with 20 units rIL-2 per mL.
6. At day 14, resuspend T cells at 2.5×10⁶ cells per mL in fresh medium supplemented with 20 units rIL-2 per mL.
7. For longer expansion, cells are now restimulated by adding one **loaded Anti-Biotin MACSiBead Particle** per two cells: Count cells and add 12.5 µL **loaded Anti-Biotin MACSiBead Particles** per 2.5×10⁶ T cells.
8. Further cultivate cells and repeat steps 2 and 3 every 3–4 days.
▲ **Note:** Daily inspect culture. Depending on the expansion rate, it might be necessary to split culture more frequently than every 3–4 days.
9. Proceed to downstream application, e.g. analysis of cells.
▲ **Note:** Removal of Anti-Biotin MACSiBead Particles is not required for immunofluorescent staining. For assays where T cells are required to return to a fully resting state before further stimulus, Anti-Biotin MACSiBead Particles should be removed at least 24 hours before restimulation (refer to section 2.6).

2.5 Immunofluorescent staining

▲ Volumes for fluorescent labeling given below are for 10⁶ total cells. When working with fewer than 10⁶ cells and up to 10⁷ cells, use the same volumes as indicated.

▲ MACSiBead Particles show no autofluorescence and do not need to be removed prior to flow cytometric analysis.

▲ After short term stimulus for up to 24 hours, scatter properties of cells may be altered due to strong interaction between cells and MACSiBead Particles.

▲ Upon stimulation, expression of CD3 might be transiently down-regulated. Thus, the staining of CD3 on the cell surface of activated cells might be affected.

1. Resuspend cells to break up cell clumps.
▲ **Note:** In short-term stimulus of cells (up to 24 hours), the Anti-Biotin MACSiBead Particles may be bound strongly to cells. Care should be taken to thoroughly resuspend cells before analysis.
2. Wash cells by adding 1–2 mL of buffer per 10⁶ cells and centrifuge at 300×g for 10 minutes. Aspirate supernatant completely.
3. Add staining antibodies, e.g., CD4-FITC and CD25-PE to 10⁶ cells resuspended with buffer according to the manufacturer's recommendations.

4. Mix well and incubate for 10 minutes in the dark in the refrigerator (2–8 °C).

▲ **Note:** Higher temperatures and/or longer incubation times lead to non-specific cell labeling. Working on ice requires increased incubation time.

5. Wash cells by adding 1–2 mL of buffer per 10⁶ cells and centrifuge at 300×g for 10 minutes. Aspirate supernatant completely.
6. Resuspend cell pellet in a suitable amount of buffer for analysis by flow cytometry or fluorescence microscopy.

2.6 Removal of Anti-Biotin MACSiBead™ Particles

▲ Removal of MACSiBead™ Particles may be required before magnetic separation of cells with MACS® MicroBeads or before restimulation with different agents or antigens.

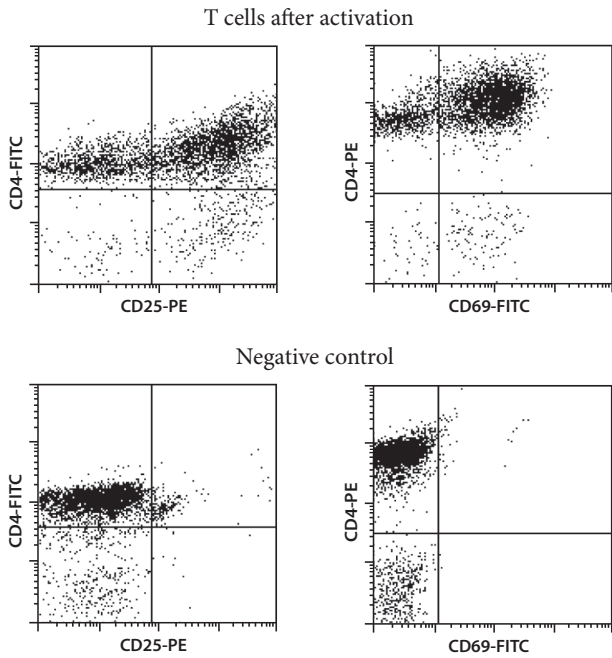
1. Harvest cells and transfer to a 5 mL, 13–15 mL, or 50 mL tube and wash once with buffer.
2. Resuspend cells in buffer at a density of up to 2×10⁷ cells per 1 mL and vortex thoroughly.
3. Place the tube in the magnetic field of the MACSiMAG™ Separator.
▲ **Note:** Use the Tube Rack to insert 5 mL tube into the magnetic field of the separator. For details refer to the MACSiMAG Separator data sheet.
4. Allow the MACSiBead Particles to adhere to the wall of the tube:

5 mL tubes:	2 minutes
13–15 mL or 50 mL tubes:	4 minutes
5. Retaining the tube in the MACSiMAG Separator, carefully pipette of the supernatant containing the MACSiBead-depleted cells into a new tube.
6. Remove the tube from the separator and add buffer to the same volume as before.
7. Vortex sample, replace tube in the MACSiMAG Separator, and repeat steps 4–5.
8. Collected cells can now be further processed as required.

3. Examples of T cell activation and T cell expansion using the T Cell Activation/Expansion Kit

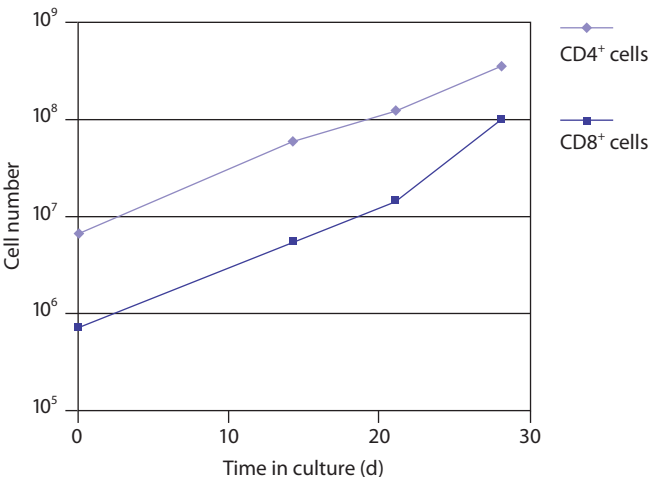
A) Example of a T cell activation

Anti-Biotin MACSiBead™ Particles were loaded with CD2, CD3, and CD28 antibodies. T cells were isolated using the Pan T Cell Isolation Kit, human. Purified T cells were activated using 1 loaded Anti-Biotin MACSiBead Particle per 2 T cells, for 72 hours. The negative control experiment was performed without adding MACSiBead Particles. Cells were fluorescently stained using CD4-FITC and CD25-PE or CD4-PE and CD69-FITC. Dead cells and debris were excluded from the analysis based on scatter signals and propidium iodide fluorescence.



B) Example of a T cell expansion

Anti-Biotin MACSiBead Particles were loaded with CD2, CD3, and CD28 antibodies. T cells were isolated using the Pan T Cell Isolation Kit, human and expanded using 1 loaded Anti-Biotin MACSiBead Particle per 2 T cells. T cells were cultured (X-VIVO™ 15 supplemented with 5% AB serum and 20 units rIL-2/mL) at an initial density of 2.5×10^6 T cells per mL per cm^2 . At day 14, additional loaded Anti-Biotin MACSiBead Particles were added at a bead-to-cell ratio of 1:2. Cells were further expanded for 2 weeks.



4. Appendix: Flask and dish sizes for T cell expansion

For T cell expansion the cells should be resuspended in culture medium at 2.5×10^6 cells/mL. The cells should be plated at a density of 2.5×10^6 cells/ cm^2 . Both the dilution and the cell density are important to assure optimal stimulation and cell growth.

The following table lists culture plate, dish and flask sizes suitable for different cell numbers. It also indicates the appropriate amount of medium to add.

Total cell number	Medium volume to add	Culture plate	Well diameter
0.75×10^6	0.3 mL	96 well	0.64 cm
2.50×10^6	1 mL	48 well	1.13 cm
5×10^6	2 mL	24 well	1.60 cm
10×10^6	4 mL	12 well	2.26 cm
25×10^6	10 mL	6 well	3.50 cm
Total cell number	Medium volume to add	Culture dish	Dish diameter
2.25×10^7	90 mL	small	3.5 cm
5×10^7	20 mL	medium	6 cm
12.5×10^7	50 mL	large	10 cm
25×10^7	100 mL	extra large	15 cm
Total cell number	Medium volume to add	Culture flask	Growth area
6×10^7	24 mL	50 mL	25 cm^2
20×10^7	80 mL	250 mL	75 cm^2
40×10^7	160 mL	720 mL	162 cm^2
60×10^7	240 mL	900 mL	225 cm^2
Total cell number	Medium volume to add	Culture bag	Growth area
6.25×10^7	25 mL	25 mL	27 cm^2
12.50×10^7	50 mL	50 mL	58 cm^2
25×10^7	100 mL	100 mL	112 cm^2

Refer to www.miltenyibiotec.com for all data sheets and protocols. Miltenyi Biotec provides technical support worldwide. Visit www.miltenyibiotec.com/local to find your nearest Miltenyi Biotec contact.

Legal notices

Limited product warranty

Miltenyi Biotec B.V. & Co. KG and/or its affiliate(s) warrant this product to be free from material defects in workmanship and materials and to conform substantially with Miltenyi Biotec's published specifications for the product at the time of order, under normal use and conditions in accordance with its applicable documentation, for a period beginning on the date of delivery of the product by Miltenyi Biotec or its authorized distributor and ending on the expiration date of the product's applicable shelf life stated on the product label, packaging or documentation (as applicable) or, in the absence thereof, ONE (1) YEAR from date of delivery ("Product Warranty"). Miltenyi Biotec's Product Warranty is provided subject to the warranty terms as set forth in Miltenyi Biotec's General Terms and Conditions for the Sale of Products and Services available on Miltenyi Biotec's website at www.miltenyibiotec.com, as in effect at the time of order ("Product Warranty"). Additional terms may apply. BY USE OF THIS PRODUCT, THE CUSTOMER AGREES TO BE BOUND BY THESE TERMS. THE CUSTOMER IS SOLELY RESPONSIBLE FOR DETERMINING IF A PRODUCT IS SUITABLE FOR CUSTOMER'S PARTICULAR PURPOSE AND APPLICATION METHODS.

Technical information

The technical information, data, protocols, and other statements provided by Miltenyi Biotec in this document are based on information, tests, or experience which Miltenyi Biotec believes to be reliable, but the accuracy or completeness of such information is not guaranteed. Such technical information and data are intended for persons with knowledge and technical skills sufficient to assess and apply their own informed judgment to the information. Miltenyi Biotec shall not be liable for any technical or editorial errors or omissions contained herein.

All information and specifications are subject to change without prior notice. Please contact Miltenyi Biotec Technical Support or visit www.miltenyibiotec.com for the most up-to-date information on Miltenyi Biotec products.

Licenses

This product and/or its use may be covered by one or more pending or issued patents and/or may have certain limitations. Certain uses may be excluded by separate terms and conditions. Please contact your local Miltenyi Biotec representative or visit Miltenyi Biotec's website at www.miltenyibiotec.com for more information.

The purchase of this product conveys to the customer the non-transferable right to use the purchased amount of the product in research conducted by the customer (whether the customer is an academic or for-profit entity). This product may not be further sold. Additional terms and conditions (including the terms of a Limited Use Label License) may apply.

CUSTOMER'S USE OF THIS PRODUCT MAY REQUIRE ADDITIONAL LICENSES DEPENDING ON THE SPECIFIC APPLICATION. THE CUSTOMER IS SOLELY RESPONSIBLE FOR DETERMINING FOR ITSELF WHETHER IT HAS ALL APPROPRIATE LICENSES IN PLACE. Miltenyi Biotec provides no warranty that customer's use of this product does not and will not infringe intellectual property rights owned by a third party. BY USE OF THIS PRODUCT, THE CUSTOMER AGREES TO BE BOUND BY THESE TERMS.

Trademarks

autoMACS, MACS, MACSiBead, MACSiMAG, MACSmix, MidiMACS, the Miltenyi Biotec logo, MiniMACS, SuperMACS, TexMACS, and VarioMACS are registered trademarks or trademarks of Miltenyi Biotec and/or its affiliates in various countries worldwide. All other trademarks mentioned in this publication are the property of their respective owners and are used for identification purposes only.

Ficoll-Paque is a trademark of GE Healthcare companies.

Copyright © 2020 Miltenyi Biotec and/or its affiliates. All rights reserved.